

VORTAC BNA	APP CRS	Rwy Idg	N/A
<b>114.1</b>	<b>045°</b>	TDZE	N/A
Chan <b>88</b>		Apt Elev	<b>583</b>

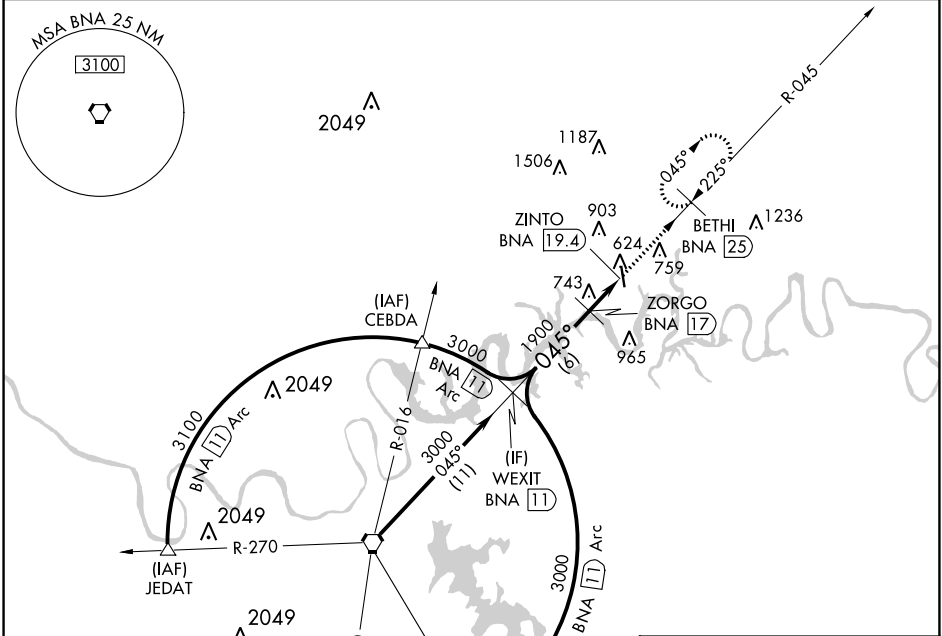
**VOR-A**  
MUSIC CITY EXEC (XNX)

DME required.

**▽** When local altimeter setting not received, use Nashville Intl altimeter setting and increase all MDA 60 feet, increase Cat C/D visibility 1/4 mile.

**▲** MISSED APPROACH: Climb to 3000 on BNA VORTAC R-045 to BETHI/25 DME and hold, continue climb-in-hold to 3000.

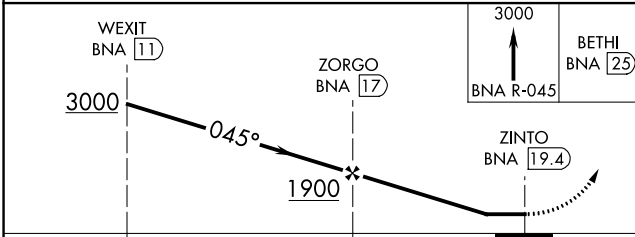
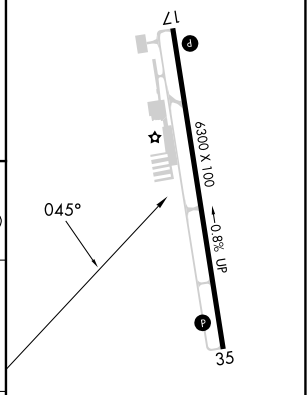
AWOS-3 <b>132.725</b>	NASHVILLE APP CON <b>118.4 360.7</b>	GCO <b>135.075</b>	UNICOM <b>123.05</b> (CTAF) <b>0</b>
--------------------------	---	-----------------------	---



Procedure NA for arrival on BNA VORTAC airway radials 016 CW 072.

IAF NASHVILLE  
114.1 BNA  
Chan 88

ELEV 583
----------



CATEGORY	A	B	C	D
<b>C</b> CIRCLING	1100-1 517 (600-1)	1120-1 537 (600-1)	1240-1 3/4 657 (700-1 3/4)	1280-2 1/4 697 (700-2 1/4)

MIRL Rwy 17-35 **0**  
REIL Rwy 17 and 35 **0**

SE-1, 22 FEB 2024 to 21 MAR 2024

SE-1, 22 FEB 2024 to 21 MAR 2024