

AWOS-3  
118.375  
CTAF  
122.8  
MIAMI DEP CON  
125.5 354.1

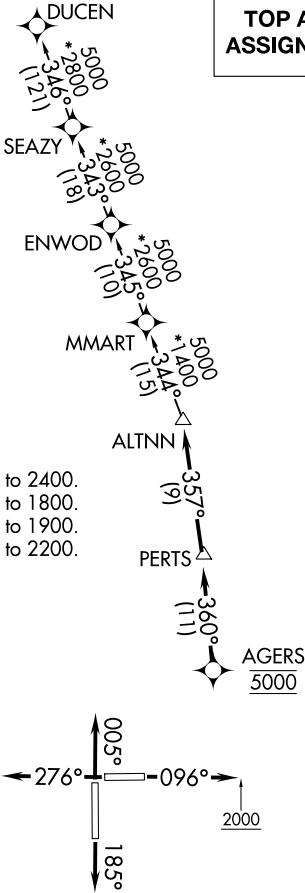
RNAV 1 - DME/DME/IRU or GPS.
RADAR required.

TOP ALTITUDE:  
ASSIGNED BY ATC

TAKEOFF MINIMUMS

- Rwy 10: Standard with minimum climb of 500' per NM to 2400.  
Rwy 18: Standard with minimum climb of 500' per NM to 1800.  
Rwy 28: Standard with minimum climb of 500' per NM to 1900.  
Rwy 36: Standard with minimum climb of 500' per NM to 2200.

NOTE: Jet aircraft only.  
NOTE: Accelerate to 250K, if unable, advise ATC.



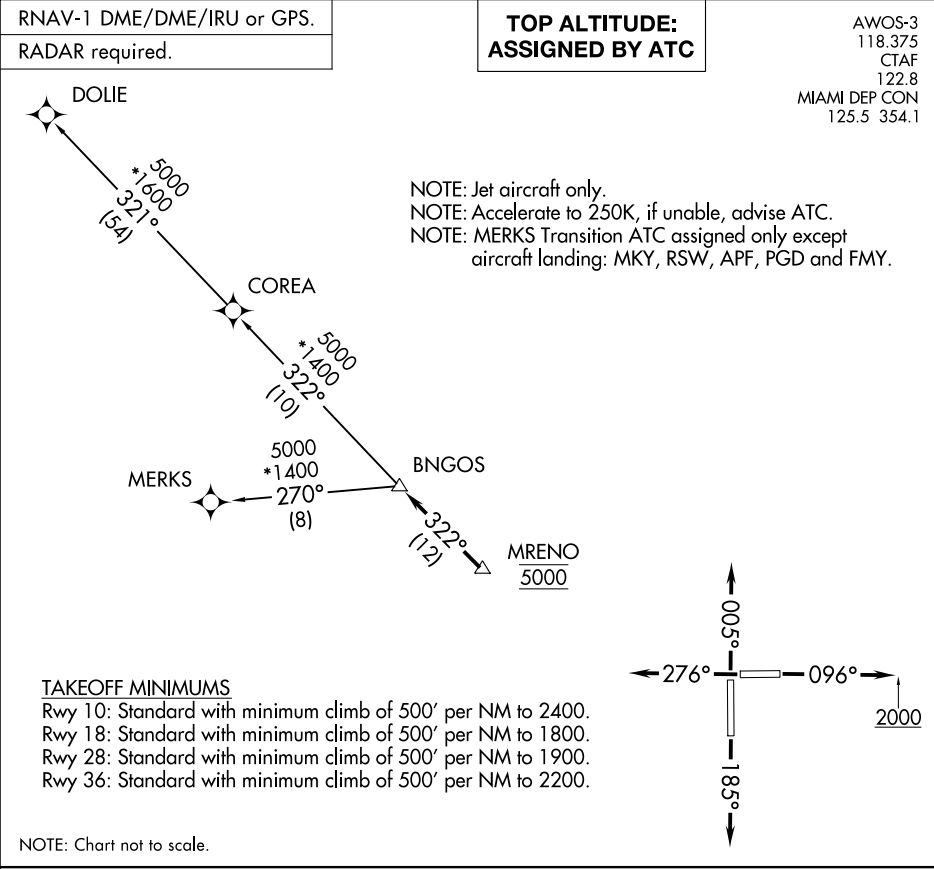
NOTE: Chart not to scale.



DEPARTURE ROUTE DESCRIPTION

- TAKEOFF RUNWAY 10:** Climb on heading 096° to 2000, then as assigned for RADAR vectors to cross AGERS at 5000, thence. . . .
- TAKEOFF RUNWAY 18:** Climb on heading 185° or as assigned for RADAR vectors to cross AGERS at 5000, thence. . . .
- TAKEOFF RUNWAY 28:** Climb on heading 276° or as assigned for RADAR vectors to cross AGERS at 5000, thence. . . .
- TAKEOFF RUNWAY 36:** Climb on heading 005° or as assigned for RADAR vectors to cross AGERS at 5000, thence. . . .
- . . . . on track 360° to PERTS, then on track 357° to ALTNN, then on assigned transition, maintain ATC assigned altitude, expect filed altitude within 10 minutes after departure.

DUCEN TRANSITION (ALTNN1.DUCEN)



DEPARTURE ROUTE DESCRIPTION

TAKEOFF RUNWAY 10: Climb on heading 096° to 2000, then as assigned for RADAR vectors to cross MRENO at 5000, thence. . .

TAKEOFF RUNWAY 18: Climb on heading 185° or as assigned for RADAR vectors to cross MRENO at 5000, thence. . .

TAKEOFF RUNWAY 28: Climb on heading 276° or as assigned for RADAR vectors to cross MRENO at 5000, thence. . .

TAKEOFF RUNWAY 36: Climb on heading 005° or as assigned for RADAR vectors to cross MRENO at 5000, thence. . .

. . .on track 322° to BNGOS, then on transition, maintain ATC assigned altitude, expect clearance to filed altitude within 10 minutes after departure.

COREA TRANSITION (BNGOS3.COREA)

DOLIE TRANSITION (BNGOS3.DOLIE)

MERKS TRANSITION (BNGOS3.MERKS)

AWOS-3 118.375 MIAMI DEP CON 125.5 354.1	<b>TOP ALTITUDE: ASSIGNED BY ATC</b>	RNAV 1 - DME/DME/IRU or GPS.  RADAR required.
---	--	---

TAKEOFF MINIMUMS

Rwy 10: Standard with minimum climb of 500' per NM to 2500.  
Rwy 18, 28: Standard with minimum climb of 500' per NM to 1900.  
Rwy 36: Standard with minimum climb of 500' per NM to 2200.

DEPARTURE ROUTE DESCRIPTION

TAKEOFF RUNWAY 10: Climb on heading 096° to 2000, or as assigned by ATC for RADAR vectors to cross LIFRR at 4000, thence. . . .

TAKEOFF RUNWAY 18: Climb on heading 185° or as assigned by ATC for RADAR vectors to cross LIFRR at 4000, thence. . . .

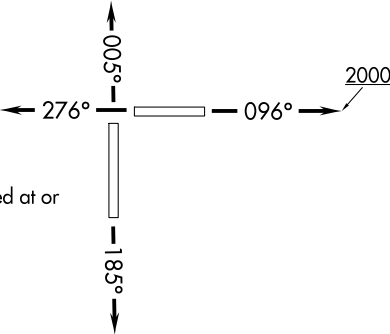
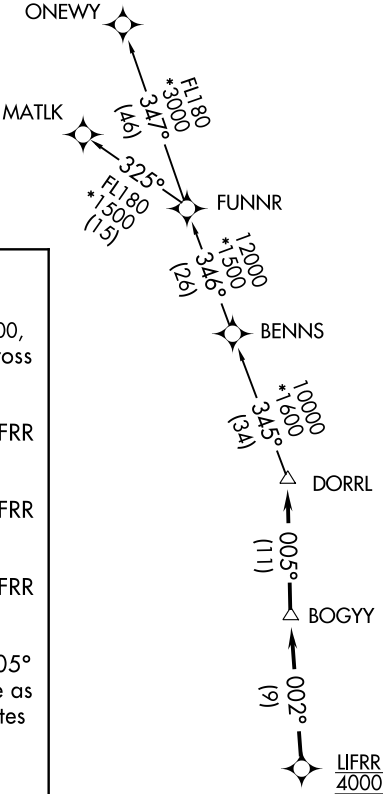
TAKEOFF RUNWAY 28: Climb on heading 276° or as assigned by ATC for RADAR vectors to cross LIFRR at 4000, thence. . . .

TAKEOFF RUNWAY 36: Climb on heading 005° or as assigned by ATC for RADAR vectors to cross LIFRR at 4000, thence. . . .

. . . .on track 002° to BOGYY, then on track 005° to DORRL then on (transition), maintain altitude as assigned by ATC, expect filed altitude 10 minutes after departure.

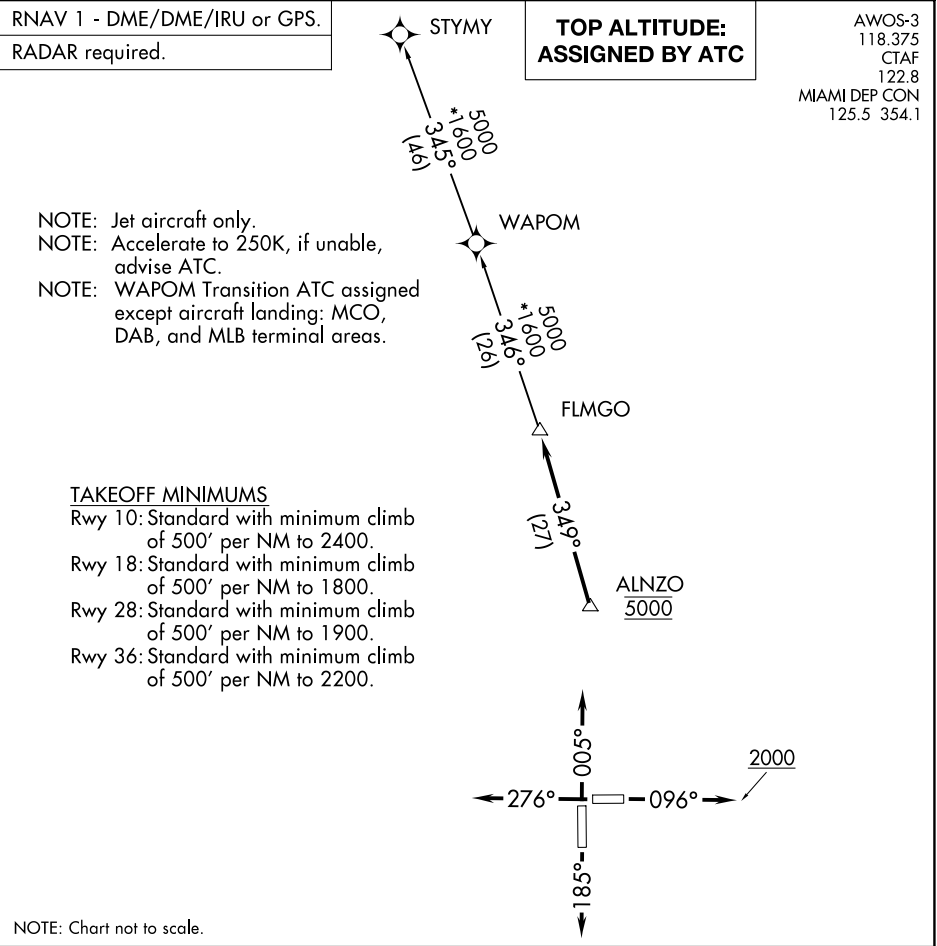
MATLK TRANSITION (DORRL1.MATLK)

ONEWY TRANSITION (DORRL1.ONEWY)



NOTE: For turbo-props/props filed at or above 13000.

NOTE: Chart not to scale.



DEPARTURE ROUTE DESCRIPTION

TAKEOFF RUNWAY 10: Climb on heading 096° to 2000, then as assigned for RADAR vectors to cross ALNZO at 5000, thence. . . .

TAKEOFF RUNWAY 18: Climb on heading 185° or as assigned for RADAR vectors to cross ALNZO at 5000, thence. . . .

TAKEOFF RUNWAY 28: Climb on heading 276° or as assigned for RADAR vectors to cross ALNZO at 5000, thence. . . .

TAKEOFF RUNWAY 36: Climb on heading 005° or as assigned for RADAR vectors to cross ALNZO at 5000, thence. . . .

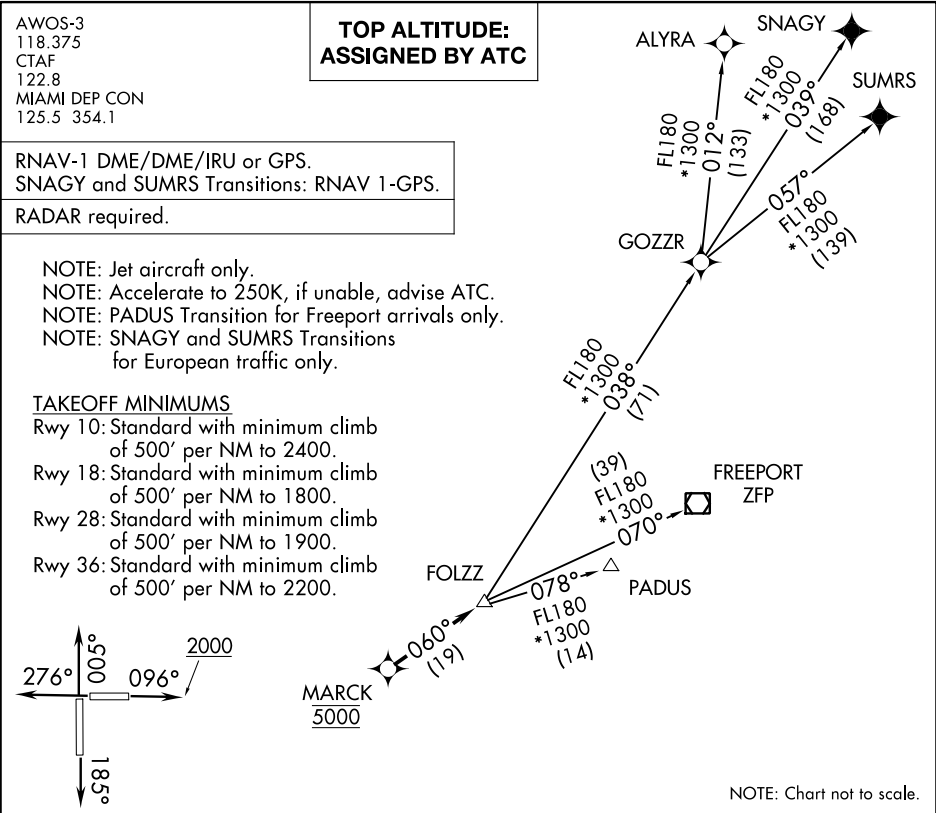
. . . on track 349° to FLMGO, then on assigned transition. Maintain ATC assigned altitude. Expect filed altitude within 10 minutes after departure.

STYMY TRANSITION (FLMGO1.STYMY)

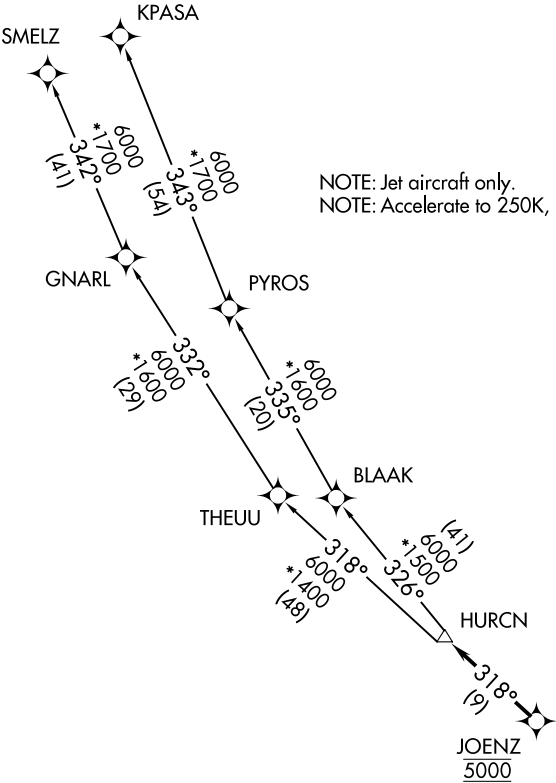
WAPOM TRANSITION (FLMGO1.WAPOM)

SE-3, 22 FEB 2024 to 21 MAR 2024

SE-3, 22 FEB 2024 to 21 MAR 2024

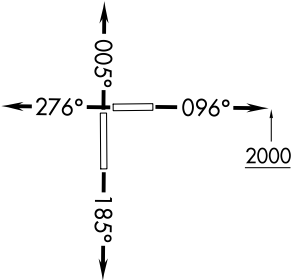


RNAV-1 DME/DME/IRU or GPS.	TOP ALTITUDE: ASSIGNED BY ATC	AWOS-3
RADAR required.		118.375 CTAF 122.8 MIAMI DEP CON 125.5 354.1



TAKEOFF MINIMUMS

- Rwy 10: Standard with minimum climb of 500' per NM to 2400.
- Rwy 18: Standard with minimum climb of 500' per NM to 1800.
- Rwy 28: Standard with minimum climb of 500' per NM to 1900.
- Rwy 36: Standard with minimum climb of 500' per NM to 2200.



NOTE: Chart not to scale.

(NARRATIVE ON FOLLOWING PAGE)



DEPARTURE ROUTE DESCRIPTION

TAKEOFF RUNWAY 10: Climb on heading 096° to 2000 then as assigned for RADAR vectors to cross JOENZ at 5000, thence. . .

TAKEOFF RUNWAY 18: Climb on heading 185° or as assigned for RADAR vectors to cross JOENZ at 5000, thence. . .

TAKEOFF RUNWAY 28: Climb on heading 276° or as assigned for RADAR vectors to cross JOENZ at 5000, thence. . .

TAKEOFF RUNWAY 36: Climb on heading 005° or as assigned for RADAR vectors to cross JOENZ at 5000, thence. . .

. . .on track 318° to HURCN, then on transition. Maintain ATC assigned altitude, expect clearance to filed altitude within 10 minutes after departure.

KPASA TRANSITION (HURCN3.KPASA)

SMELZ TRANSITION (HURCN3.SMELZ)

SE-3, 22 FEB 2024 to 21 MAR 2024

SE-3, 22 FEB 2024 to 21 MAR 2024

LIFRR ONE DEPARTURE (RNAV)

TOP ALTITUDE:  
ASSIGNED BY ATC

RNAV 1 - DME/DME/IRU or GPS.

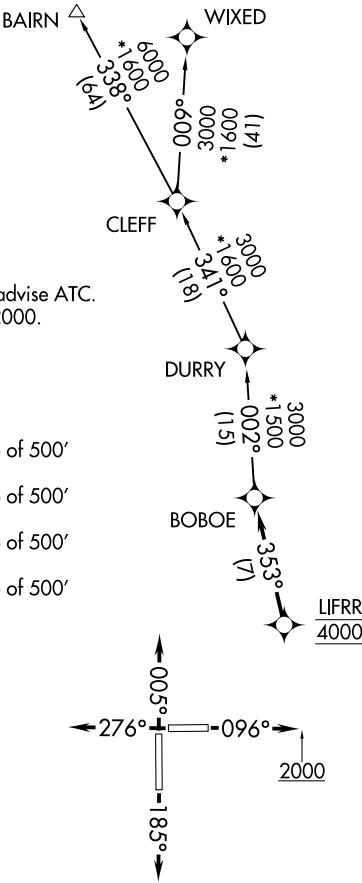
RADAR required.

AWOS-3  
118.375  
CTAF  
122.8  
MIAMI DEP CON  
125.5 354.1

NOTE: Jet aircraft only.  
NOTE: Accelerate to 250K, if unable, advise ATC.  
NOTE: For aircraft filed at or below 12000.

TAKEOFF MINIMUMS

- Rwy 10: Standard with minimum climb of 500' per NM to 2400.
- Rwy 18: Standard with minimum climb of 500' per NM to 1800.
- Rwy 28: Standard with minimum climb of 500' per NM to 1900.
- Rwy 36: Standard with minimum climb of 500' per NM to 2200.



NOTE: Chart not to scale.



DEPARTURE ROUTE DESCRIPTION

- TAKEOFF RUNWAY 10:** Climb on heading 096° to 2000, then as assigned by ATC for vectors to cross LIFRR at 4000, thence. . .
- TAKEOFF RUNWAY 18:** Climb on heading 185° or as assigned by ATC for vectors to cross LIFRR at 4000, thence. . .
- TAKEOFF RUNWAY 28:** Climb on heading 276° or as assigned by ATC for vectors to cross LIFRR at 4000, thence. . .
- TAKEOFF RUNWAY 36:** Climb on heading 005° or as assigned by ATC for vectors to cross LIFRR at 4000, thence. . .

. . .on track 353° to BOBOE, then on assigned transition, maintain ATC assigned altitude, expect clearance to filed altitude within 10 minutes after departure.

BAIRN TRANSITION (LIFRR1.BAIRN)  
WIXED TRANSITION (LIFRR1.WIXED)

MAYNR ONE DEPARTURE (RNAV)  
(MAYNR1, MAYNR) 19MAY22

MIAMI HOMESTEAD GENERAL AVIATION (X51)  
HOMESTEAD, FLORIDA

AWOS-3  
118.375  
CTAF  
122.8  
MIAMI DEP CON  
125.5 354.1

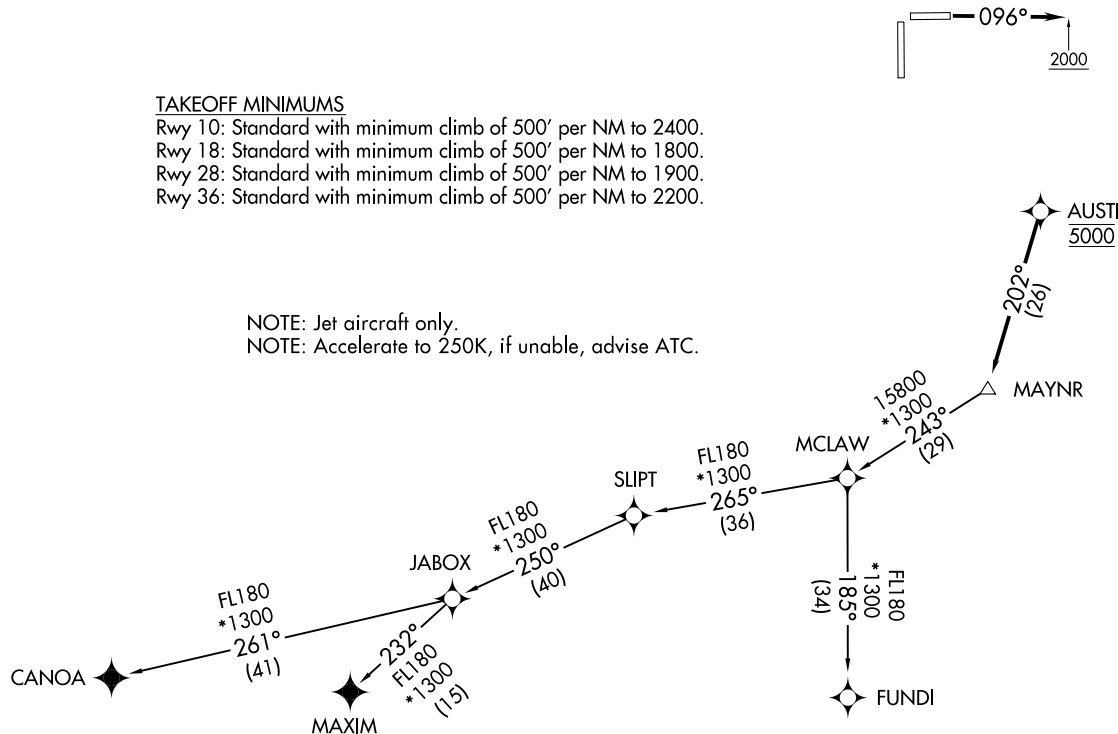
RNAV1 - DME/DME/IRU or GPS.  
From SLIPT to MAXIM: RNAV 1 - GPS.  
From SLIPT to CANOA: RNAV 1 - GPS.  
RADAR required.

TOP ALTITUDE:  
ASSIGNED BY ATC

#### TAKEOFF MINIMUMS

Rwy 10: Standard with minimum climb of 500' per NM to 2400.  
Rwy 18: Standard with minimum climb of 500' per NM to 1800.  
Rwy 28: Standard with minimum climb of 500' per NM to 1900.  
Rwy 36: Standard with minimum climb of 500' per NM to 2200.

NOTE: Jet aircraft only.  
NOTE: Accelerate to 250K, if unable, advise ATC.



NOTE: Chart not to scale.

(NARRATIVE ON FOLLOWING PAGE)

(MAYNR1, MAYNR) 22139  
MAYNR ONE DEPARTURE (RNAV)

AL-10263 (FAA)  
MIAMI HOMESTEAD GENERAL AVIATION (X51)  
HOMESTEAD, FLORIDA



DEPARTURE ROUTE DESCRIPTION

TAKEOFF RUNWAY 10: Climb on heading 096° to 2000, then as assigned by ATC for vectors to cross AUSTI at 5000, thence. . . .

TAKEOFF RUNWAYS 18, 28, 36: Climb on heading assigned by ATC for vectors to cross AUSTI at 5000, thence. . . .

. . . .on track 202° to MAYNR, then on assigned transition, maintain altitude as assigned by ATC, expect clearance to filed altitude within 10 minutes after departure.

- CANOA TRANSITION (MAYNR1.CANOA)
- FUNDI TRANSITION (MAYNR1.FUNDI)
- MAXIM TRANSITION (MAYNR1.MAXIM)

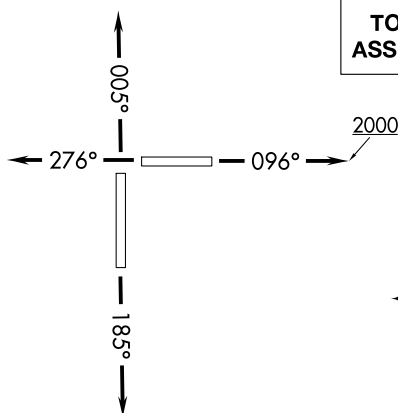
SE-3, 22 FEB 2024 to 21 MAR 2024

SE-3, 22 FEB 2024 to 21 MAR 2024

AL-10263 (FAA)

## MELLZ TWO DEPARTURE (RNAV)

MIAMI HOMESTEAD GENERAL AVIATION (X51)  
HOMESTEAD, FLORIDA



**TOP ALTITUDE:  
ASSIGNED BY ATC**

AWOS-3  
118.375  
KHST ATIS★  
132.275 269.9  
TMB ATIS  
124.0  
CTAF  
122.8  
MIAMI DEP CON  
125.5 354.1

NOTE: If unable to accept climb rate, advise ATC on initial contact.

## TAKEOFF MINIMUMS

Rwy 10: Standard with minimum climb of 500' per NM to 2400.  
Rwy 18: Standard with minimum climb of 500' per NM to 1800.  
Rwy 28: Standard with minimum climb of 500' per NM to 1900.  
Rwy 36: Standard with minimum climb of 500' per NM to 2200.

RNAV 1-DME/DME/IRU or GPS.

RADAR required for non-GPS equipped aircraft.

NOTE: Chart not to scale.

## DEPARTURE ROUTE DESCRIPTION

**TAKEOFF RUNWAY 10:** Climb on heading 096° to 2000 then as assigned by ATC for RADAR vectors to cross DAYAK at or above 5000 thence. . . .

TAKEOFF RUNWAY 18: Climb on heading 185° or as assigned by ATC for RADAR vectors to cross DAYAK at or above 5000 thence. . . .

**TAKEOFF RUNWAY 28:** Climb on heading 276° or as assigned by ATC for RADAR vectors to cross DAYAK at or above 5000 thence. . . .

TAKEOFF RUNWAY 36: Climb on heading 005° or as assigned by ATC for RADAR vectors to cross DAYAK at or above 5000 thence. . . .

...on track 136° to MELLZ, then on assigned transition. Maintain ATC assigned altitude, expect clearance to filed altitude within 10 minutes after departure.

GLAMS TRANSITION (MELLZ2.GLAMS)

URSUS TRANSITION (MELLZ2.URSUS)

MELLZ TWO DEPARTURE (RNAV)

(MELLZ2.MELLZ) 19MAY22

HOMESTEAD, FLORIDA

MIAMI HOMESTEAD GENERAL AVIATION (X51)

SE-3, 22 FEB 2024 to 21 MAR 2024