

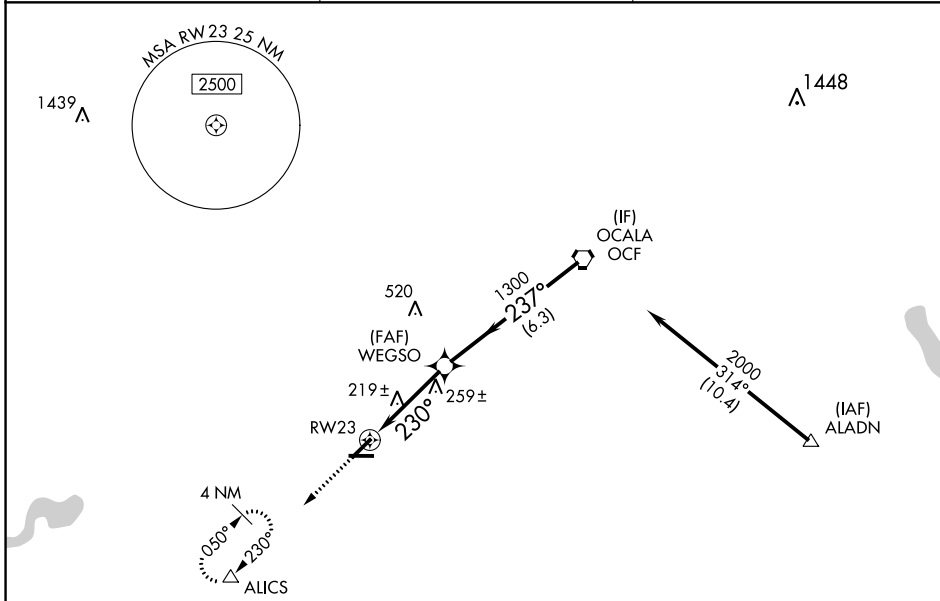
WAAS CH 48828 W23A	APP CRS 230°	Rwy Idg 5000 TDZE 65 Apt Elev 65
--	------------------------	---

RNAV (GPS) RWY 23

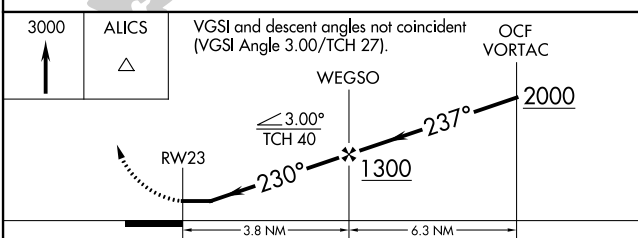
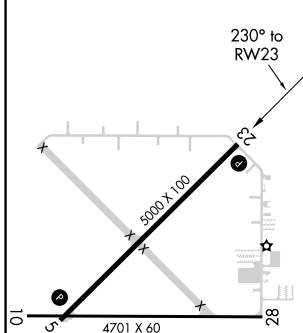
MARION COUNTY (X35)

RNP APCH.	<p>▼ Rwy 23 helicopter visibility reduction below 1 SM NA. Use Ocala altimeter setting; when not received, use Leesburg altimeter setting and increase all MDAs 60 feet, and increase LP and LNAV Cats C and D visibility ½ SM, and Circling Cat D ¼ SM. Procedure NA at night.</p> <p>▲ NA</p>	<p>MISSED APPROACH: Climb to 3000 direct AUCS and hold, continue climb-in-hold to 3000.</p>
-----------	---	---

OCF AWOS-3PT 128.125	JACKSONVILLE APP CON 118.6 251.15	UNICOM 122.8 (CTAF) 0
--------------------------------	---	---------------------------------



ELEV 65	TDZE 65
---------	---------



CATEGORY	A	B	C	D
LP MDA	500-1	435 (500-1)	500-1¼	435 (500-1¼)
LNAV MDA	540-1	475 (500-1)	540-1¾	475 (500-1¾)
CIRCLING	540-1 475 (500-1)	560-1 495 (500-1)	580-1½ 515 (600-1½)	760-2¼ 695 (700-2¼)

SE-3, 22 FEB 2024 to 21 MAR 2024

SE-3, 22 FEB 2024 to 21 MAR 2024