

WARNER ROBINS, GEORGIA

# RNAV (GPS) RWY 15

APCH CRS	Rwy Idg	12,001
146°	TDZE	294
	Arpt Elev	294

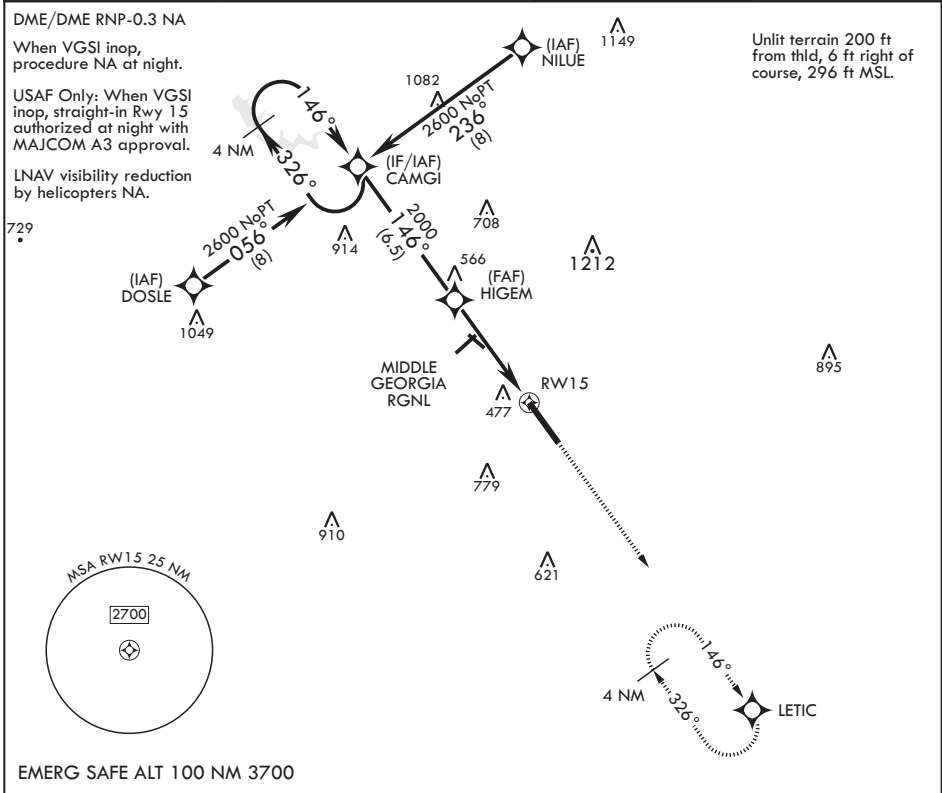
AL-442 (USAF)

ROBINS AFB (KWWRB)

▼ \* When ALS inop, increase CAT AB RVR to 55, vis to 1 mile, CAT CDE vis to 1 5/8 miles.  
 \*\* Circling NA SW of Rwy 15-33.

ALSIF-1 MISSED APPROACH: Climb to 2700 direct LETIC and hold.

ATIS 119.475 273.475	ATLANTA APP CON/DEP CON 124.2 279.6	TOWER 133.225 257.975	GND CON 121.85 275.8
-------------------------	----------------------------------------	--------------------------	-------------------------



4 NM Holding Pattern 2600 326° CAMGI 146°	VGSI and descent angle not coincident. 2700 LETIC ELEV 294 TDZE 294	146° HIGEM 2000 3.11° TCH 55 RWY 15 5 NM	12,001-300 TWR 33 HIRL all Rwys		
CATEGORY	A	B	C	D	E
LNAV MDA*	860/50	566 (600-1)	860-1¼	566	(600-1¼)
<b>C</b> CIRCLING**	860-1	567 (600-1)	860-1½ 567 (600-1½)	960-2 667 (700-2)	1100-2¾ 807 (900-2¾)

WARNER ROBINS, GEORGIA

32°38'N - 83°36'W

ROBINS AFB (KWWRB)

Amdt 4 31JAN19

# RNAV (GPS) RWY 15

SE-4, 22 FEB 2024 to 21 MAR 2024

SE-4, 22 FEB 2024 to 21 MAR 2024