

# COPTER RNAV (GPS) X RWY 31

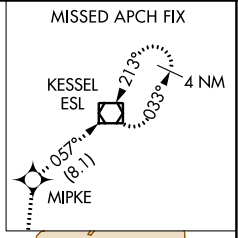
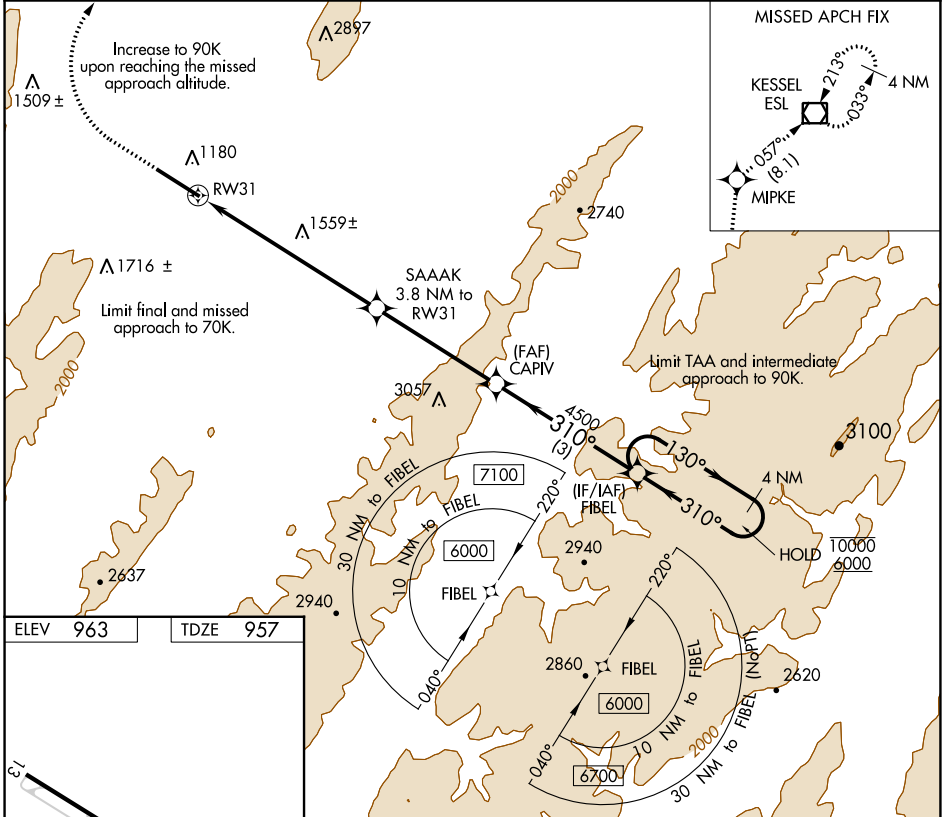
GRANT COUNTY (W99)

APP CRS	Rwy Idg	<b>5000</b>
<b>310°</b>	TDZE	<b>957</b>
	Apt Elev	<b>963</b>

RNP APCH.
<p>⚠ NA When local altimeter setting not received, procedure NA.</p> <p>❄ -8°C</p>

MISSED APPROACH: Climb to 1380 then climbing right turn to 5000 direct MIPKE and on track 057° to ESL VOR/DME and hold.

AWOS-3 <b>124.475</b>	WASHINGTON CENTER <b>133.55 322.55</b>	UNICOM <b>122.8 (CTAF)</b>
--------------------------	---	-------------------------------



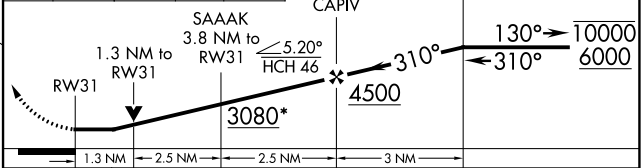
NE-4, 22 FEB 2024 to 21 MAR 2024

NE-4, 22 FEB 2024 to 21 MAR 2024

ELEV	963	TDZE	957
------	-----	------	-----



1380	5000	MIPKE	tr 057°	ESL	VGSI and descent angles not coincident (VGSI Angle 6.50/TCH 46).
					FIBEL Holding Pattern 4 NM



REIL Rws 13 and 31	MIRL Rwy 13-31
CATEGORY	COPTER
LNAV MDA	1880- <sup>3</sup> / <sub>4</sub> 923 (1000- <sup>3</sup> / <sub>4</sub> )

# COPTER RNAV (GPS) X RWY 31

LOC HYQ <b>111.5</b> Chan 52	APP CRS <b>285°</b>	Rwy Idg TDZE Apt Elev <b>963</b>	<b>N/A</b> <b>N/A</b> <b>963</b>
------------------------------------	------------------------	---	--

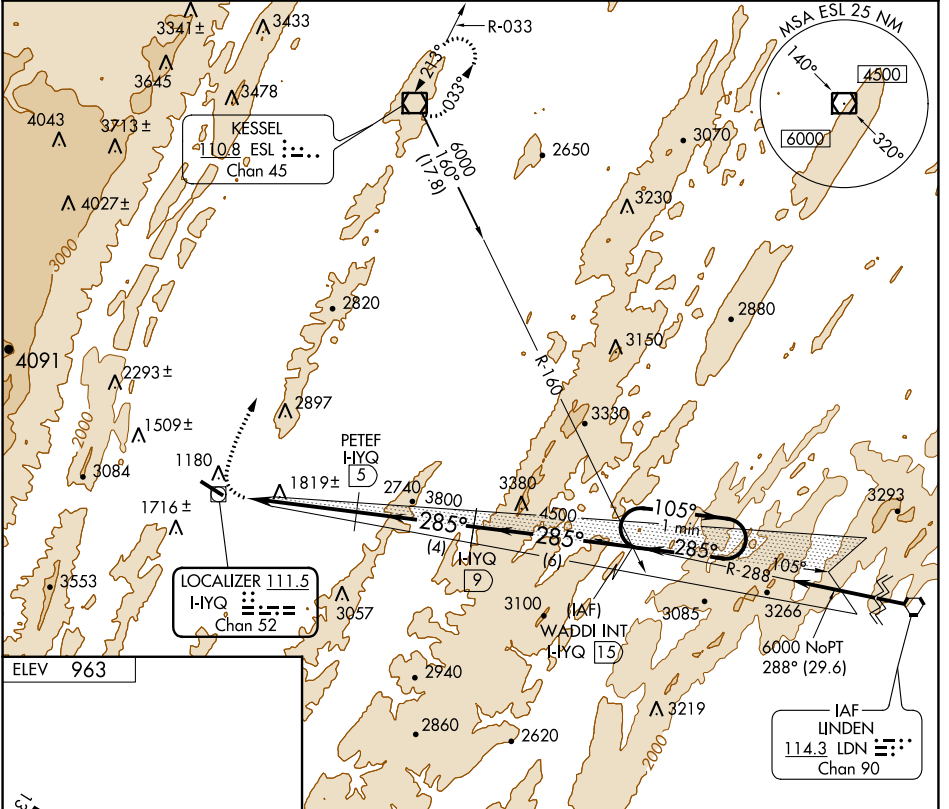
# LDA/DME-B

GRANT COUNTY (W99)

**NA**  
-8°C

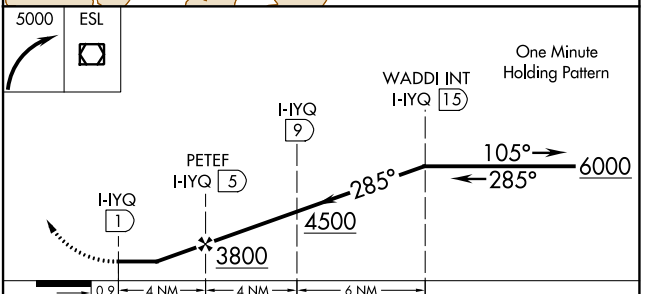
MISSED APPROACH: Climbing right turn to 5000 direct ESL VOR/DME and hold.

AWOS-3 <b>124.475</b>	WASHINGTON CENTER <b>133.55 322.55</b>	UNICOM <b>122.8 (CTAF) 0</b>
--------------------------	---	---------------------------------



ELEV 963

MIRL Rwy 13-31 0  
REIL Rwy 13 and 31 0



CATEGORY	A	B	C	D
CIRCLING	2500-1¼ 1537 (1600-1¼)	2500-1½ 1537 (1600-1½)	2880-3 1917 (2000-3)	NA

NE-4, 22 FEB 2024 to 21 MAR 2024

NE-4, 22 FEB 2024 to 21 MAR 2024

APP CRS	Rwy Idg	N/A
145°	TDZE	N/A
	Apt Elev	963

# RNAV (GPS)-C

GRANT COUNTY (W99)

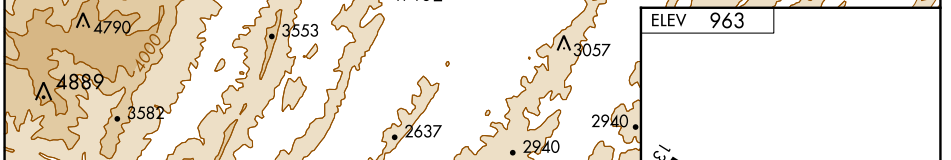
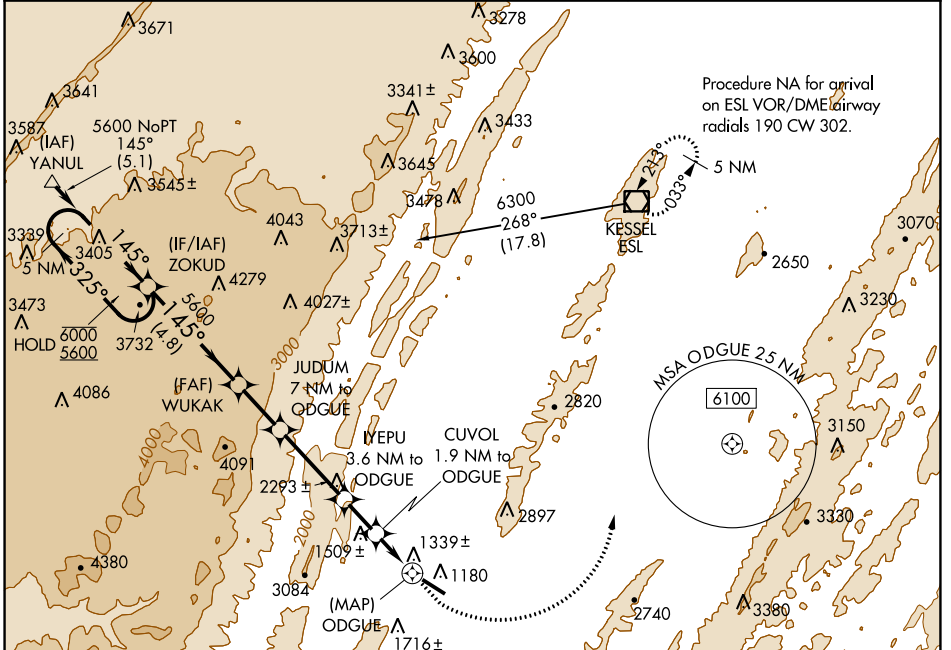
RNP APCH - GPS

⚠ When local altimeter setting not received, procedure NA.

❄ -8°C

MISSED APPROACH: Climb to 2900 then climbing left turn to 5000 direct ESL VOR/DME and hold.

AWOS-3 <b>124.475</b>	WASHINGTON CENTER <b>133.55 322.55</b>	UNICOM <b>122.8 (CTAF)</b>
--------------------------	---	-------------------------------



5 NM Holding Pattern	ZOKUD	WUKAK	JUDUM 7 NM to ODGUE	IYEPU 3.6 NM to ODGUE	CUVOL 1.9 NM to ODGUE	ODGUE
6000 ← 325°	5600 ← 145°	5600	4800	3600	3040	
4.8 NM	2.2 NM	3.4 NM	1.7 NM	1.9 NM	0.5	

CATEGORY	A	B	C	D	MIRL Rwy 13-31	REIL Rwys 13 and 31
CIRCLING	2400-1¼ 1437 (1500-1¼)	2400-1½ 1437 (1500-1½)	NA	NA		

WAAS CH <b>58131</b> <b>W31A</b>	APP CRS <b>295°</b>	Rwy Idg TDZE Apt Elev	<b>5000</b> <b>957</b> <b>963</b>
--	------------------------	-----------------------------	---

# RNAV (GPS) Y RWY 31

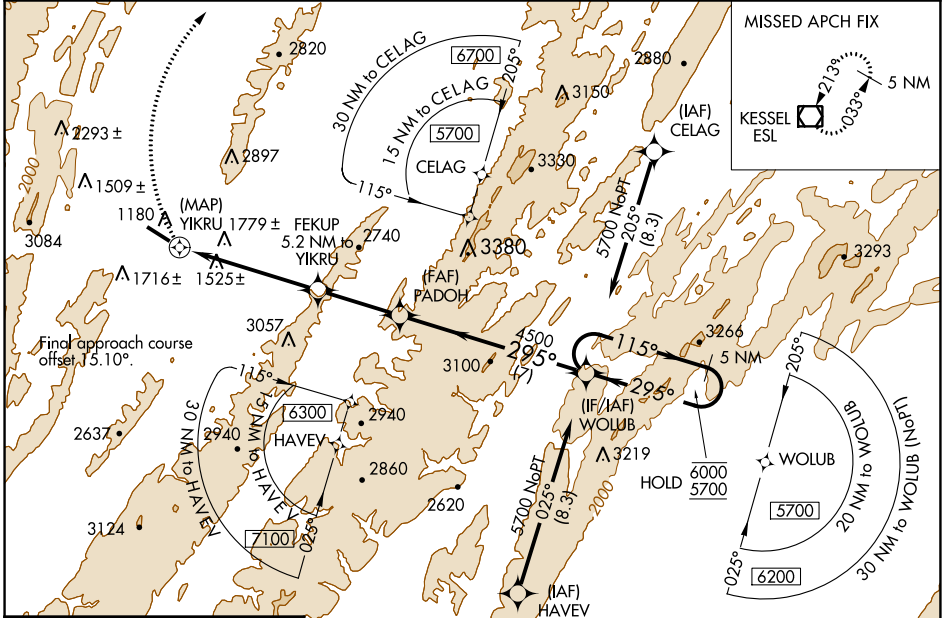
GRANT COUNTY (W99)

RNP APCH-GPS.

**▼** Rwy 31 helicopter visibility reduction below 3/4 SM NA.  
**▲** When local altimeter setting not received, procedure NA.  
**☼** -8°C

MISSED APPROACH: Climbing right turn to 5000 direct ESL VOR/DME and hold.

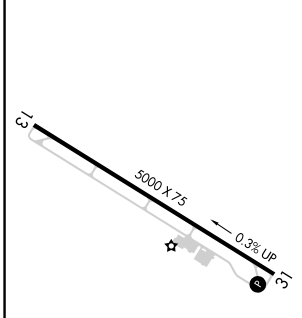
AWOS-3 <b>124.475</b>	WASHINGTON CENTER <b>133.55 322.55</b>	UNICOM <b>122.8 (CTAF)</b> <b>📻</b>
--------------------------	---	--



NE-4, 22 FEB 2024 to 21 MAR 2024

NE-4, 22 FEB 2024 to 21 MAR 2024

ELEV 963	TDZE 957
----------	----------



5000	ESL	VGSI and descent angles not coincident (VGSI Angle 6.50/TCH 46).	5 NM
			WOLUB Holding Pattern
	FEKUP 5.2 NM to YIKRU	PADOH	
	1.9 NM to YIKRU	3.76° TCH 46	
	YIKRU	4500	
	0.5	1.9	3.3 NM
		3.1 NM	7 NM

CATEGORY	A	B	C	D
LP MDA	2620-1¼ 1663 (1700-1¼)	2620-1½ 1663 (1700-1½)		NA
LNAV MDA	2740-1¼ 1783 (1800-1¼)	2740-1½ 1783 (1800-1½)		NA
<b>C</b> CIRCLING	2740-1¼ 1777 (1800-1¼)	2740-1½ 1777 (1800-1½)		NA

REIL Rwy 13 and 31 **📻**  
 MIRL Rwy 13-31 **📻**

WAAS CH <b>50543</b> <b>W31B</b>	APP CRS <b>295°</b>	Rwy Idg TDZE Apt Elev	<b>5000</b> <b>957</b> <b>963</b>
--	------------------------	-----------------------------	---

# RNAV (GPS) Z RWY 31

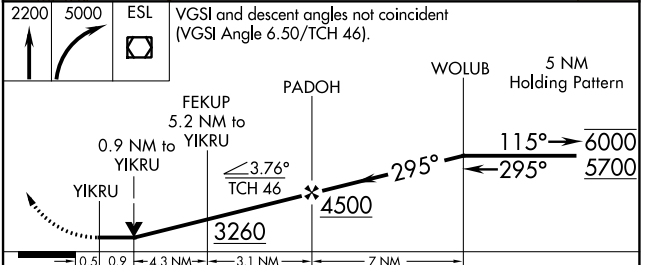
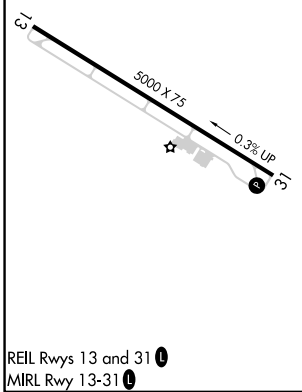
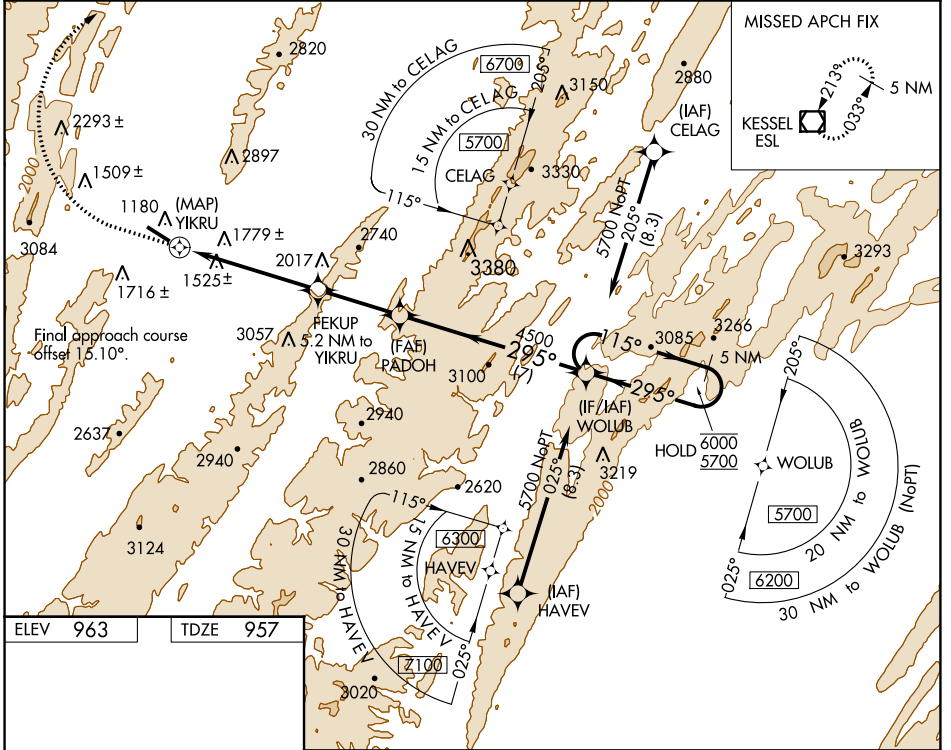
GRANT COUNTY (W99)

RNP APCH - GPS.

**▼** Rwy 31 helicopter visibility reduction below 3/4 SM NA.  
**▲** When local altimeter setting not received, procedure NA.  
**☒** -8°C

MISSED APPROACH: Climb to 2200 then climbing right turn to 5000 direct ESL VOR/DME and hold.  
 \*Missed approach requires minimum climb of 410 feet per NM to 3300, if unable to meet climb gradient, see RNAV (GPS) Y Rwy 31.

AWOS-3 <b>124.475</b>	WASHINGTON CENTER <b>133.55 322.55</b>	UNICOM <b>122.8 (CTAF) 0</b>
--------------------------	---	---------------------------------



NE-4, 22 FEB 2024 to 21 MAR 2024

NE-4, 22 FEB 2024 to 21 MAR 2024

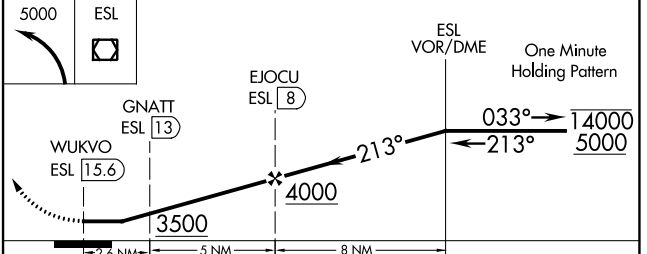
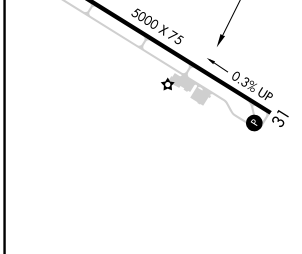
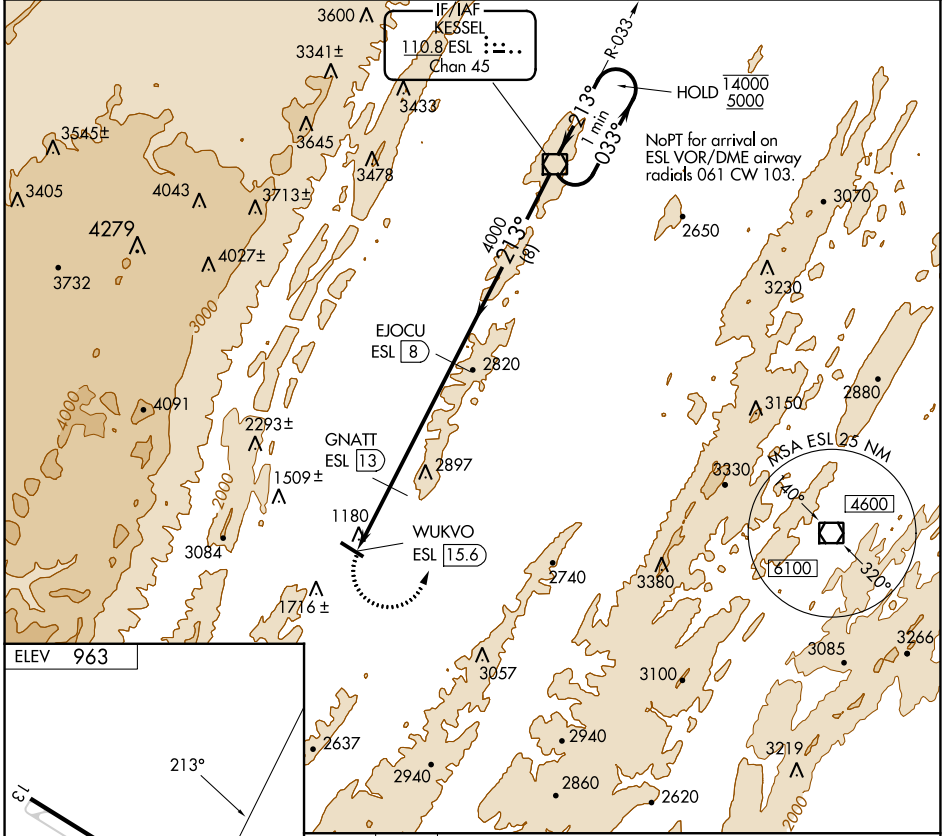
VOR/DME ESL <b>110.8</b> Chan <b>45</b>	APP CRS <b>213°</b>	Rwy Idg TDZE Apt Elev <b>963</b>	<b>N/A</b> <b>N/A</b> <b>963</b>
---	------------------------	---	--

# VOR/DME-A

GRANT COUNTY (W99)

**MISSSED APPROACH:** Climbing left turn to 5000 direct ESL VOR/DME and hold.

AWOS-3 <b>124.475</b>	WASHINGTON CENTER <b>133.55 322.55</b>	UNICOM <b>122.8 (CTAF)</b>
--------------------------	---	-------------------------------



REIL Rwys 13 and 31 MIRL Rwy 13-31	CATEGORY	A	B	C	D
	CIRCLING	3100-1¼ 2137 (2200-1¼)	3100-1½ 2137 (2200-1½)	NA	

NE-4, 22 FEB 2024 to 21 MAR 2024

NE-4, 22 FEB 2024 to 21 MAR 2024