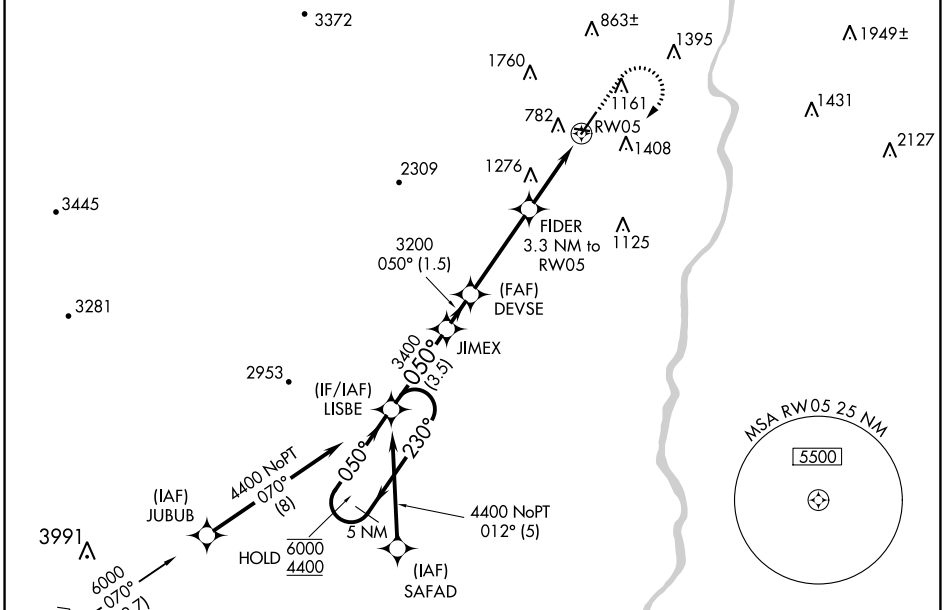


APP CRS 050°	Rwy Idg TDZE Apt Elev	5501 575 578
------------------------	-----------------------------	---

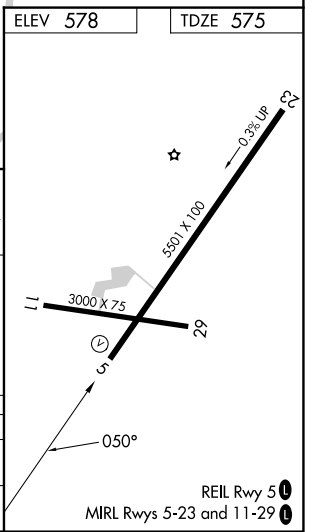
RNAV (GPS) RWY 5

HARTNESS STATE (SPRINGFIELD) (V5F)

RNP APCH - GPS.		MISSED APPROACH: Climb to 2100 then climbing right turn to 4400 direct LISBE and hold.
 -20°C	Circling Rwy 11, 23, 29 NA at night. Rwy 5 helicopter visibility reduction below 3/4 SM NA.	
ASOS 121.425	BOSTON CENTER 134.7 269.475	UNICOM 122.8 (CTAF) 0



5 NM Holding Pattern		VGSIs and descent angles not coincident (VGSi Angle 4.00/TCH 59).		2100	4400	LISBE
6000	4400	JIMEX	DEVSE	FIDER	RW05	
← 230°	→ 050°	3400	3200	1820	2.7 NM to RW05	
		3.46° TCH 59				
		← 3.5 NM	← 1.5 NM	← 3.7 NM	← 0.6 NM	← 2.7



NE-1, 22 FEB 2024 to 21 MAR 2024

NE-1, 22 FEB 2024 to 21 MAR 2024