

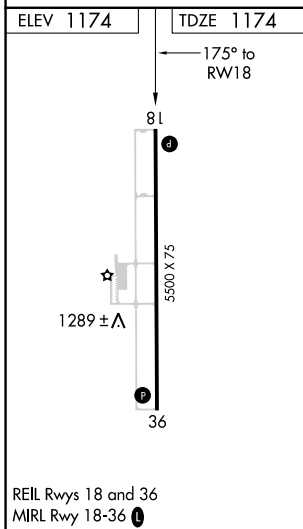
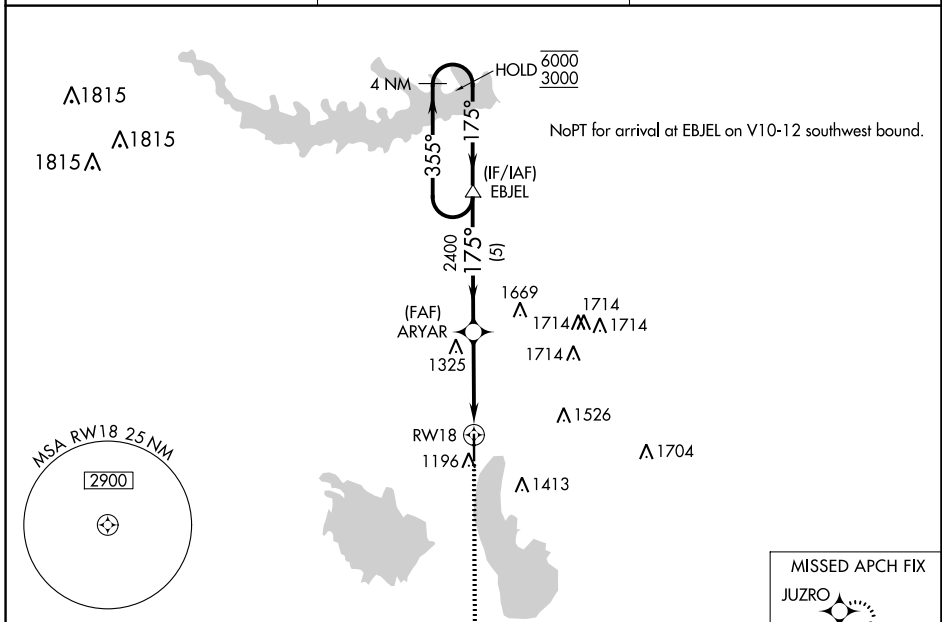
WAAS CH <b>66021</b> <b>W18A</b>	APP CRS <b>175°</b>	Rwy Idg <b>5500</b> TDZE <b>1174</b> Apt Elev <b>1174</b>
--	------------------------	---

# RNAV (GPS) RWY 18

COFFEY COUNTY (UKL)

RNP APCH-GPS.	MISSED APPROACH: Climb to 3000 direct JUZRO and hold.
For uncompensated Baro-VNAV systems, LNAV/VNAV NA below -17°C or above 54°C.	

AWOS-3PT <b>121.125</b>	KANSAS CITY CENTER <b>127.725 270.25</b>	UNICOM <b>123.0 (CTAF) 0</b>
----------------------------	---	---------------------------------



	4 NM Holding Pattern	EBJEL	ARYAR	1.2 NM to RWY 18	RWY 18
	6000 ← 355°	3000 → 175°	2400	2400	
	GP 3.00°	TCH 40			
		5 NM	2.5 NM	1.2 NM	
CATEGORY	A	B	C	D	
LPV DA		1424-1	250 (300-1)		NA
LNAV/VNAV DA		1424-1	250 (300-1)		NA
LNAV MDA	1580-1	406 (500-1)	1580-1 1/8	406 (500-1 1/8)	NA
<b>C</b> CIRCLING	1580-1	1640-1	1920-2 1/4	746 (800-2 1/4)	NA
	406 (500-1)	466 (500-1)			

NC-2, 22 FEB 2024 to 21 MAR 2024

NC-2, 22 FEB 2024 to 21 MAR 2024