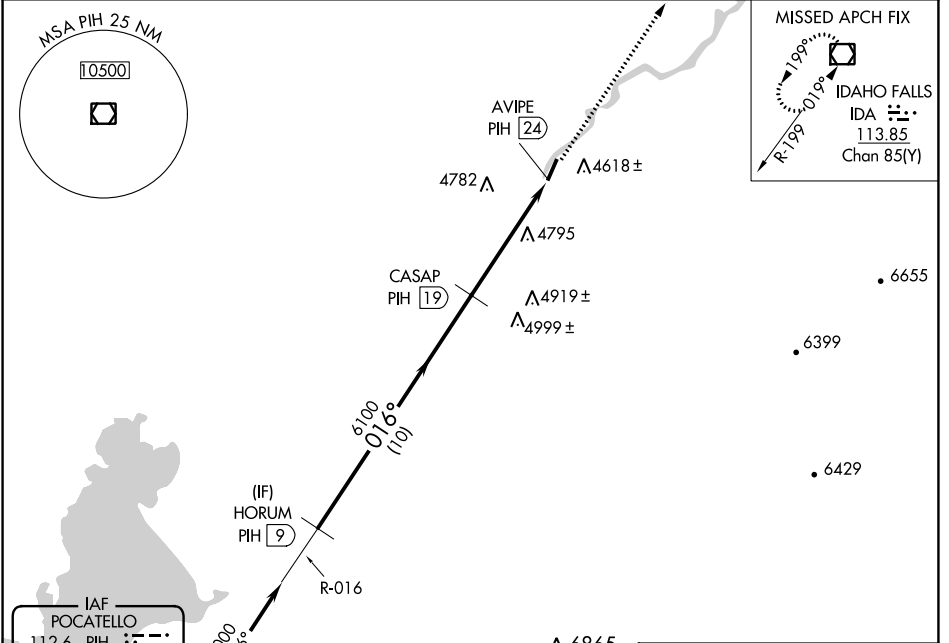


VOR/DME PIH 112.6 Chan 73	APP CRS 016°	Rwy Idg TDZE Apt Elev	N/A N/A 4492
---	------------------------	-----------------------------	---

VOR/DME-C
MCCARLEY FLD (U02)

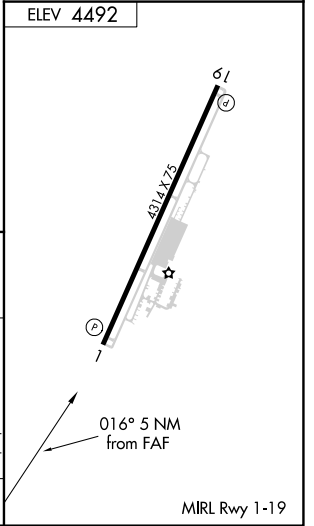
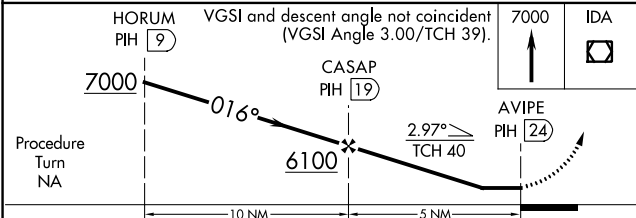
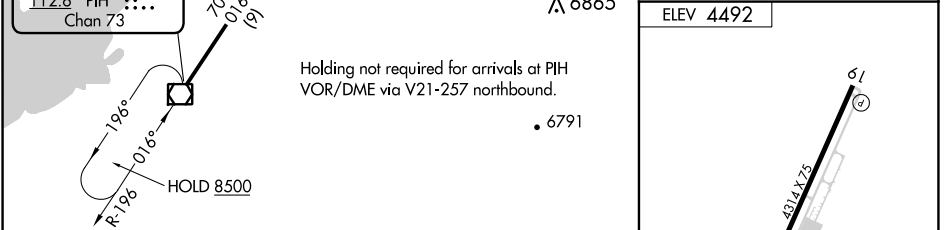
▼ Use Pocatello altimeter setting, when not received use Idaho Falls altimeter setting. Helicopter visibility reduction below 1 SM NA.
▲ NA MISSED APPROACH: Climb to 7000 direct IDA VOR/DME and hold.

SALT LAKE CITY CENTER **128.35 239.25** UNICOM **122.8** (CTAF)



NW-1, 22 FEB 2024 to 21 MAR 2024

NW-1, 22 FEB 2024 to 21 MAR 2024



CATEGORY	A	B	C	D
CIRCLING	5460-1¼ 968 (1000-1¼)	5460-1½ 968 (1000-1½)	5460-3 968 (1000-3)	5900-3 1408 (1500-3)

MIRL Rwy 1-19