

VIICE.VIICE2) 19MAY22

VIICE TWO ARRIVAL (RNAV) Transition Routes

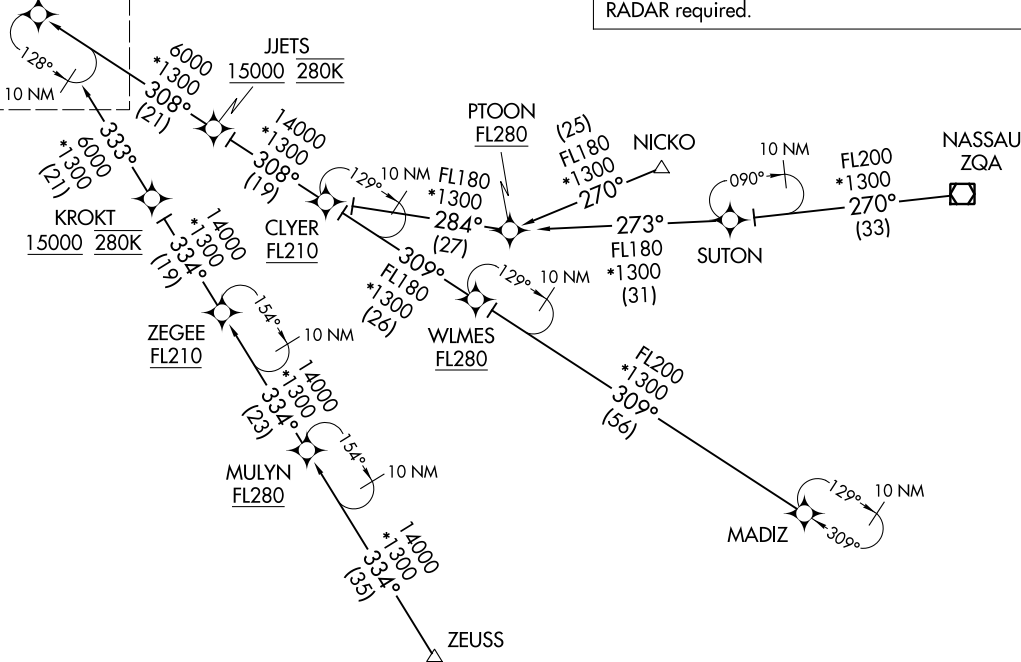
MIAMI, FLORIDA

MIAMI APP CON  
120.5 350.225  
KHST ATIS ★  
132.275 269.9  
MIA D-ATIS  
119.15  
TMB ATIS  
124.0  
X51 AWOS-3  
118.375

See following page for arrival routes.

VIICE  
16000

RNAV 1 - DME/DME/IRU or GPS.  
ZEUSS, MADIZ, ZQA, NICKO TRANSITION: GPS  
RADAR required.



NOTE: Jet aircraft only.  
NOTE: Landing east use Rwy 9 Transition, landing west use Rwy 30 Transition. Expect Rwy assignment from MIA approach prior to VIICE.  
NOTE: Do not file PTOON or ZEGEE Transition - to be assigned by ATC.

MADIZ TRANSITION (MADIZ.VIICE2)  
NASSAU TRANSITION (ZQA.VIICE2)  
NICKO TRANSITION (NICKO.VIICE2)  
PTOON TRANSITION (PTOON.VIICE2)  
ZEGEE TRANSITION (ZEGEE.VIICE2)  
ZEUSS TRANSITION (ZEUSS.VIICE2)

(CONTINUED ON FOLLOWING PAGE)

NOTE: Chart not to scale.

VIICE.VIICE2) 22139

Transition Routes

MIAMI, FLORIDA

AL-257 (FAA)

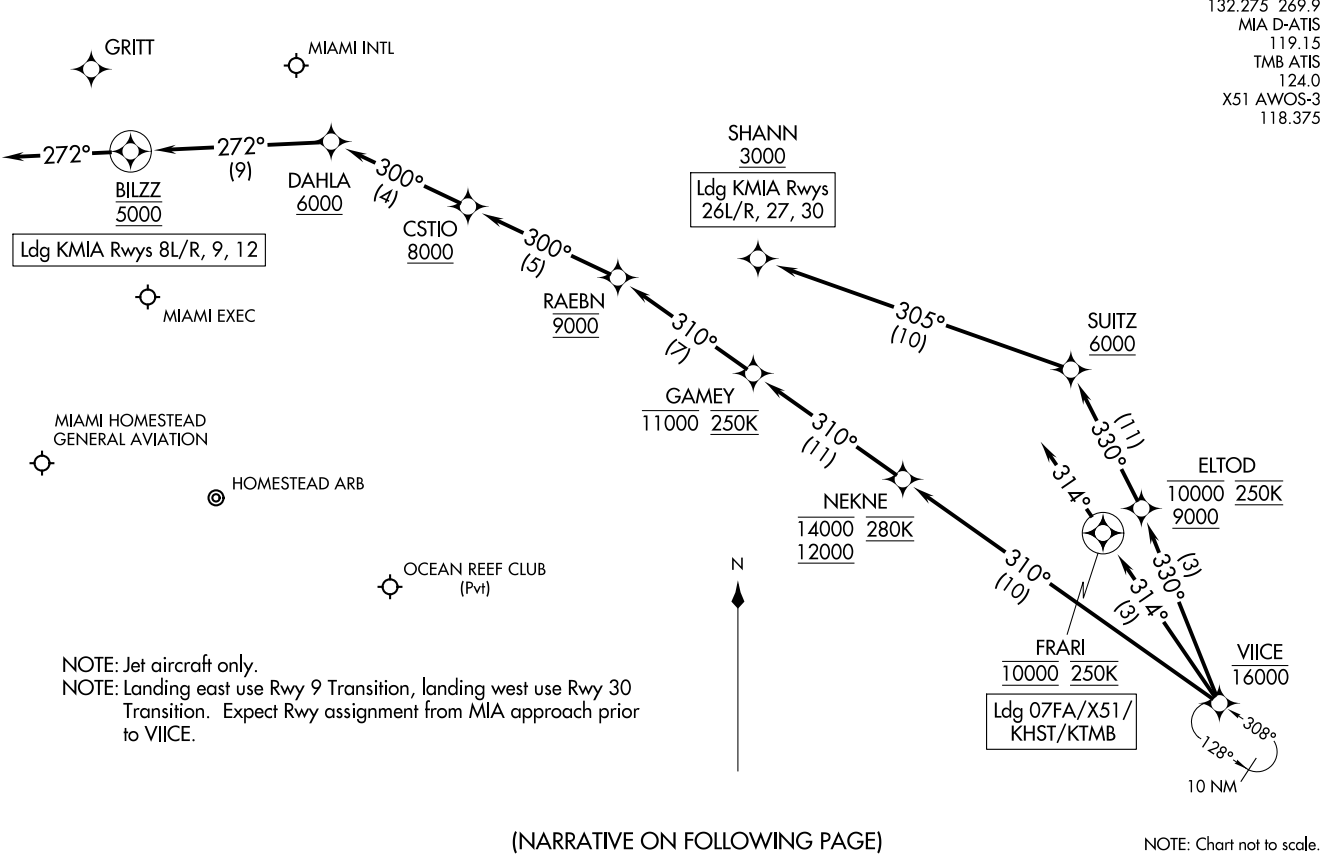
VICE TWO ARRIVAL (RNAV)  
(VICE.VICE2) 19MAY22

Arrival Routes

MIAMI, FLORIDA

RNAV 1 - DME/DME/IRU or GPS.  
RADAR required.

MIAMI APP CON  
120.5 350.225  
KHST ATIS ★  
132.275 269.9  
MIA D-ATIS  
119.15  
TMB ATIS  
124.0  
X51 AWOS-3  
118.375



VICE TWO ARRIVAL (RNAV)  
(VICE.VICE2) 23222

Arrival Routes

MIAMI, FLORIDA

NOTE: Chart not to scale.