

(GABOO.GABOO1) 22027

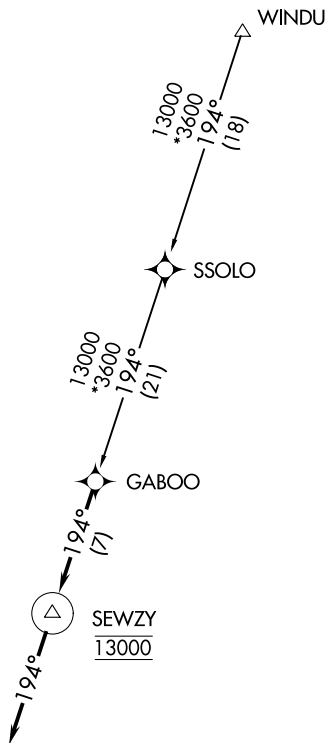
GABOO ONE ARRIVAL (RNAV)

AL-502 (FAA)

AUSTIN, TEXAS

AUSTIN APP CON
127.225 317.65
HYI ATIS ★
120.825
T74 AWOS-3PT
119.75

- NOTE: RADAR required.
- NOTE: RNAV 1.
- NOTE: DME/DME/IRU or GPS required.
- NOTE: Turbojet and turboprop aircraft only.



NOTE: Chart not to scale.

ARRIVAL ROUTE DESCRIPTION

SSOLO TRANSITION (SSOLO.GABOO1)
WINDU TRANSITION (WINDU.GABOO1)

LANDING ALL AIRPORTS: From GABOO on track 194° to cross SEWZY at 13000, then on track 194°. Expect RADAR vectors to final approach course.

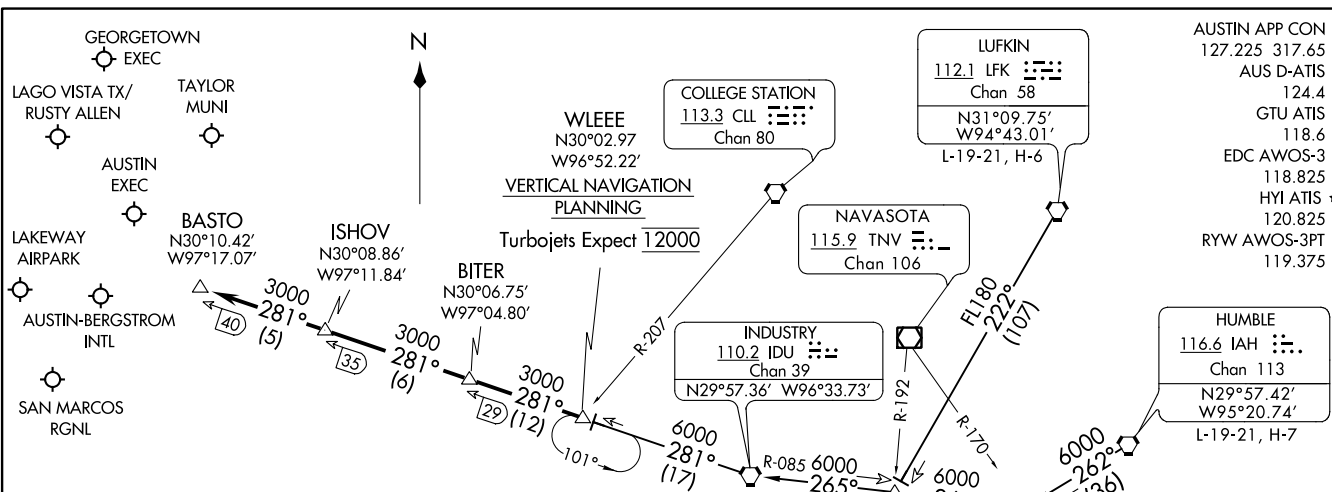
GABOO ONE ARRIVAL (RNAV)
(GABOO.GABOO1) 16JUL20

AUSTIN, TEXAS

SC-3, 22 FEB 2024 to 21 MAR 2024

SC-3, 22 FEB 2024 to 21 MAR 2024

BITER NINE ARRIVAL
(WLEEE.BITER9) 25APR19



AUSTIN APP CON 127.225 317.65
 AUS D-ATIS 124.4
 GTU ATIS 118.6
 EDC AWOS-3 118.825
 HYI ATIS 120.825
 RYW AWOS-3PT 119.375

ARRIVAL ROUTE DESCRIPTION

HUMBLE TRANSITION (IAH.BITER9): From over IAH VORTAC on IAH R-262 to SHYNR INT, then on IDU R-085 to IDU VORTAC, then on IDU R-281 to WLEEE INT. Thence

INDUSTRY TRANSITION (IDU.BITER9): From over IDU VORTAC on IDU R-281 to WLEEE INT. Thence

LUFKIN TRANSITION (LFK.BITER9): From over LFK VORTAC on LFK R-222 to BOCCK INT, then on IDU R-085 to IDU VORTAC, then on IDU R-281 to WLEEE INT. Thence

. . . . From over WLEEE on IDU R-281 to BITER, then on IDU R-281 to ISHOV, then on IDU R-281 to BASTO. Expect vectors to final approach course at or prior to BASTO.

NOTE: RADAR required.
 NOTE: DME required.
 NOTE: DME/DME/IRU or GPS equipped aircraft must file the WLEEE (RNAV) or POTRR (RNAV) STAR.

NOTE: Chart not to scale.

AUSTIN, TEXAS


(WLEEE.BITER9) 22195
BITER NINE ARRIVAL


AL-556 (FAA)


AUSTIN, TEXAS

BLEWE FIVE ARRIVAL

AUSTIN APP CON
127.225 317.65
AUS D-ATIS
124.4
EDC AWOS-3
118.825
HYI ATIS *
120.825
RYW AWOS-3PT
119.375

WACO
115.3 ACT 
Chan 100
N31°39.73'-W97°16.14'
L-19, H-6

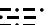
MAVERICK
113.1 TTT 
Chan 78

GOOCH SPRINGS
112.5 AGJ 
Chan 72

WINDU
N31°31.83'
W97°04.95'
H-6

BLEWE
N31°12.46'
W97°12.54'

SEWZY
N30°48.80'
W97°21.74'
VERTICAL NAVIGATION
PLANNING
Expect 13000

CENTEX
112.8 CWK 
Chan 75
N30°22.71'-W97°31.79'

LAGO VISTA TX/
RUSTY ALLEN

LAKEWAY
AIRPARK

AUSTIN-BERGSTROM
INTL

SAN MARCOS RGNL

NOTE: RADAR required.
NOTE: DME required.

NOTE: Chart not to scale.

ARRIVAL ROUTE DESCRIPTION

WACO TRANSITION (ACT.BLEWE5): From over ACT VORTAC on ACT R-165 to BLEWE. Thence . . .

WINDU TRANSITION (WINDU.BLEWE5): From over WINDU on CWK R-012 to BLEWE. Thence . . .

. . . From over BLEWE on CWK R-012 to SEWZY, then on CWK R-012 to CWK VORTAC. Expect vectors to final approach course at or prior to CWK VORTAC.

SC-3, 22 FEB 2024 to 21 MAR 2024

SC-3, 22 FEB 2024 to 21 MAR 2024

BLEWE FIVE ARRIVAL

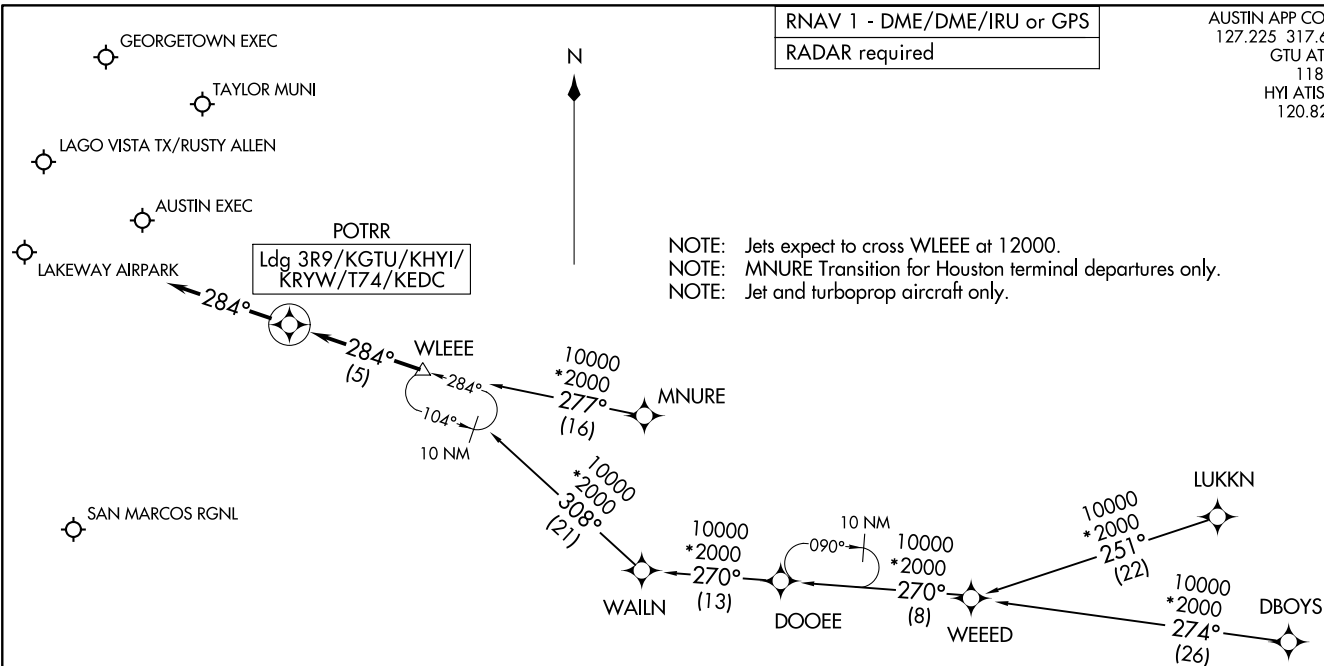
POTRR TWO ARRIVAL (RNAV)
(WLEEE.POTRR2) 14JUL22

(WLEEE.POTRR2) 22195
POTRR TWO ARRIVAL (RNAV)

AUSTIN APP CON
127.225 317.65
GTU ATIS
118.6
HYI ATIS ★
120.825

RNAV 1 - DME/DME/IRU or GPS
RADAR required

NOTE: Jets expect to cross WLEEE at 12000.
NOTE: MNURE Transition for Houston terminal departures only.
NOTE: Jet and turboprop aircraft only.



NOTE: Chart not to scale.

ARRIVAL ROUTE DESCRIPTION

- DBOYS TRANSITION (DBOYS.POTRR2)
- LUKKN TRANSITION (LUKKN.POTRR2)
- MNURE TRANSITION (MNURE.POTRR2)
- WEED TRANSITION (WEED.POTRR2)

LANDING ALL AIRPORTS: From WLEEE on track 284° to POTRR, then on track 284°. Expect RADAR vectors to final approach course.

AUSTIN, TEXAS

AUSTIN, TEXAS

AL-5891 (FAA)