

NDB RWY 34

NDB CRN 281	APCH CRS 354°	Rwy Idg TDZE Arprt Elev 4200 1476 1565
-----------------------	-------------------------	--

AL-2332 [USAF]

SPARREVOHN LRRS (PASV)

▼ Night operations not authorized.
Visibility reduction by helicopters NA.

MISSED APPROACH: Climb to 4200, then climbing right turn to 5500 direct CRN and hold. Continue climb and hold to 5500.

ANCHORAGE CENTER 134.3 351.8	KENAI RCO 122.5	SPARREVOHN RADIO 126.2 (CTAF)	AWOS-3
--	---------------------------	---	--------

**MILITARY CERTIFIED
AIRCREWS OR AUTHORIZED
CONTRACT AIRCRAFT ONLY**

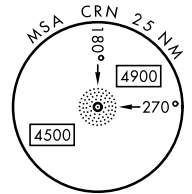
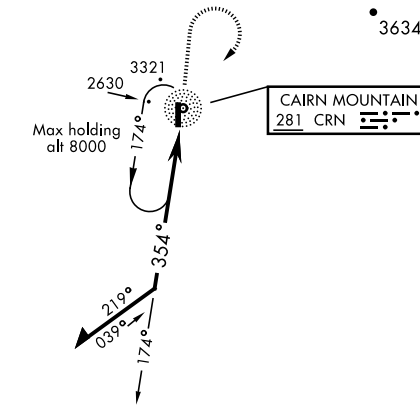
NOT FOR CIVIL USE

CAUTION: Rwy surrounded by mountains.
Rwy located on slope of 3236' mountain.
Approach from S only, land Rwy 34 only.

CAUTION: Terrain 1530' MSL, 2773' from thld,
1008' left of course.

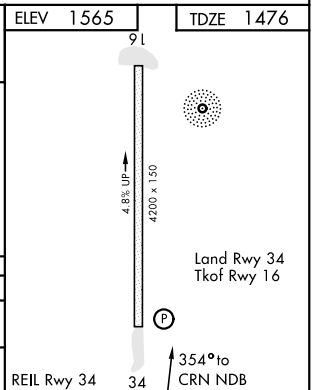
Successful go-around improbable
if initiated past the MAP.

Uncontrolled Airspace
below 700' AGL within
3 NM of Sparrevohn
airport.



EMERG SAFE ALT 100 NM 13,500

		4200 ↑	5500 ↷	CRN 	ELEV 1565	TDZE 1476	
CATEGORY	A	B	C	D			
S-34	3580-1¼ 2104 (2100-1¼)	3580-1½ 2104 (2100-1½)	3580-3 2104	(2100-3)			
CIRCLING	NOT AUTHORIZED						



AK, 25 JAN 2024 to 21 MAR 2024

AK, 25 JAN 2024 to 21 MAR 2024

NDB RWY 34