

WAAS CH <b>87100</b> <b>W26A</b>	APP CRS <b>262°</b>	Rwy Idg TDZE <b>5380</b> Apt Elev <b>5446</b>	<b>6803</b>
--	------------------------	---	-------------

# RNAV (GPS) RWY 26

GRANT COUNTY (SVC)

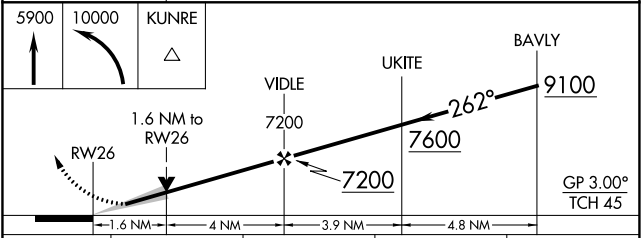
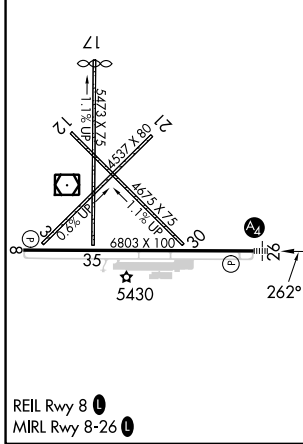
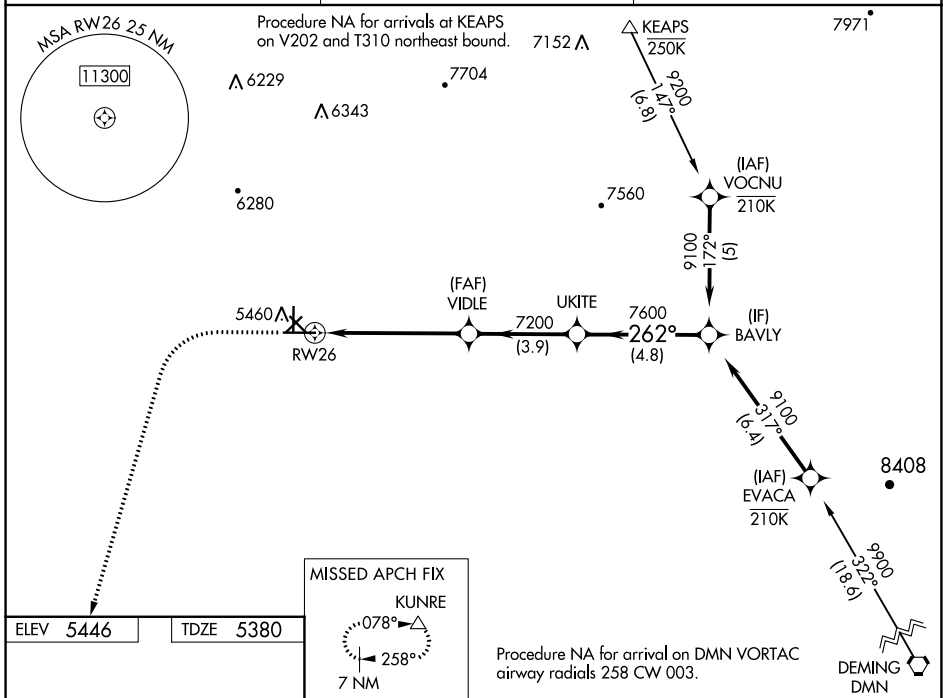
RNP APCH-GPS.

**⚠** Circling NA to Rwys 3, 12, 17, 21, 30 and 35. Inop table does not apply to LPV and LNAV/VNAV. For uncompensated Baro-VNAV systems, LNAV/VNAV NA below -25°C or above 54°C.

MALS **A**

MISSED APPROACH: Climb to 5900 then climbing left turn to 10000 direct KUNRE and hold.

AWOS-3 <b>126.725</b>	ALBUQUERQUE CENTER <b>134.45 327.15</b>	UNICOM <b>122.8 (CTAF)</b> <b>1</b>
--------------------------	--	--



CATEGORY	A	B	C	D
LPV DA	5630-3/4 250 (200-3/4)			
LNAV/VNAV DA	5630-3/4 250 (200-3/4)			
LNAV MDA	5940-3/4	560 (500-3/4)	5940-1 3/8	560 (500-1 1/8)
<b>C</b> CIRCLING	5940-1 494 (500-1)	5960-1 514 (600-1)	6100-1 3/4 654 (700-1 3/4)	6740-3 1294 (1300-3)

SW-1, 22 FEB 2024 to 21 MAR 2024

SW-1, 22 FEB 2024 to 21 MAR 2024