

APP CRS Rwy Idg **10679**
 TDZE **583**
 Apt Elev **618**

RNAV (RNP) Z RWY 30L

ST LOUIS LAMBERT INTL (STL)

RNP AR APCH.

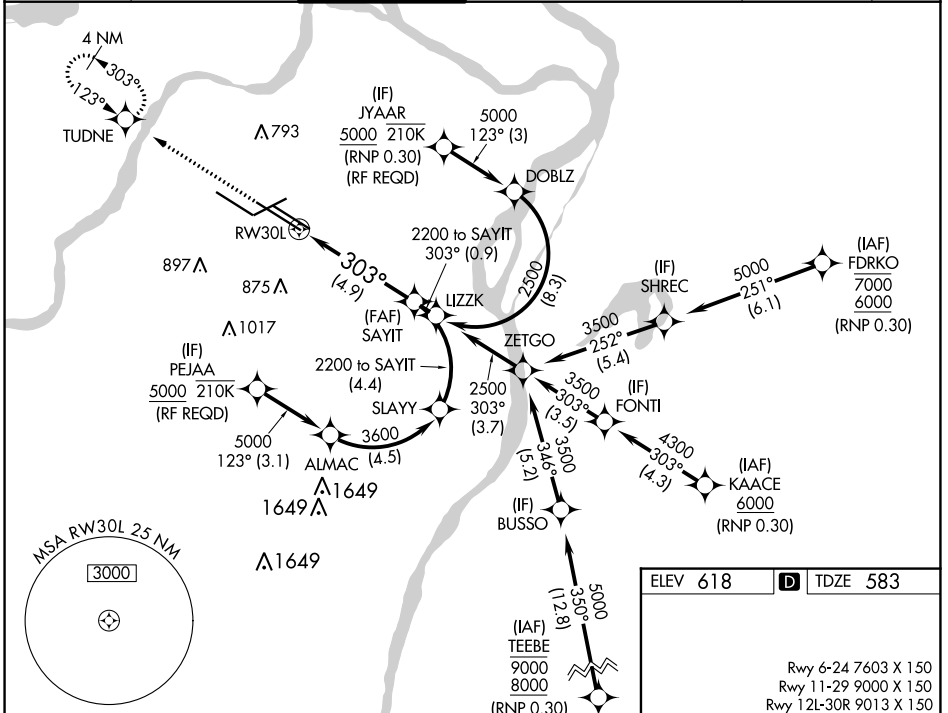
Use of FD or AP required during simultaneous operations. Simultaneous approach authorized with Rwy 29, except for arrivals at JYAAR and PEJAA. For uncompensated Baro-VNAV systems, procedure NA below -18°C or above 54°C. For inop ALS, increase RNP 0.15 all Cats visibility to RVR 5500 and RNP 0.30 all Cats visibility to RVR 6000.

MALSR



MISSED APPROACH: Climb to 3000 direct TUDNE and hold, continue climb-in-hold to 3000.

D-ATIS 125.025 379.925	ST. LOUIS APP CON 132.125 360.6	ST. LOUIS TOWER 118.5 257.7	GND CON 121.9 348.6 (Inbound) 121.65 377.175 (Outbound) 118.925 227.125 (Rwy 11/29)	CLNC DEL 119.5 363.1	CPDLC
--	---	---------------------------------------	---	--------------------------------	-------

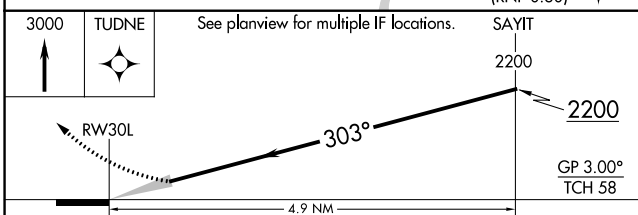


NC-3, 22 FEB 2024 to 21 MAR 2024

NC-3, 22 FEB 2024 to 21 MAR 2024

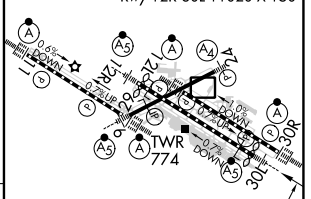
ELEV 618 **D** TDZE 583

Rwy 6-24 7603 X 150
 Rwy 11-29 9000 X 150
 Rwy 12L-30R 9013 X 150
 Rwy 12R-30L 11020 X 150



CATEGORY	A	B	C	D
RNP 0.15 DA		947/35	364 (400-5/6)	
RNP 0.30 DA		998/40	415 (400-3/4)	

AUTHORIZATION REQUIRED



HIRL all Rwys
 TDZ/CL Rwys 11, 12L, 12R, 29, and 30R