

WAAS CH 72818 W35A	APP CRS 354°	Rwy Idg TDZE Apt Elev	5593 1067 1073
--	------------------------	-----------------------------	---

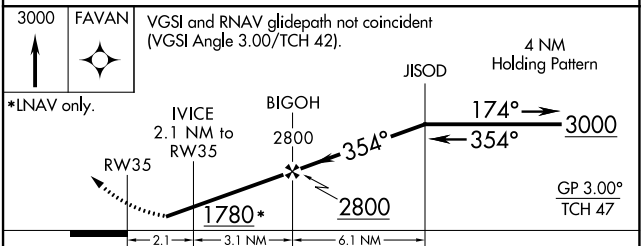
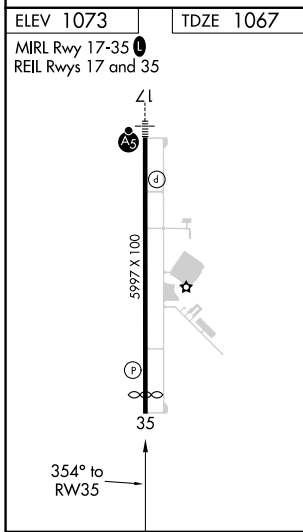
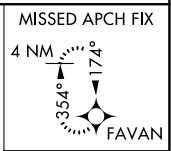
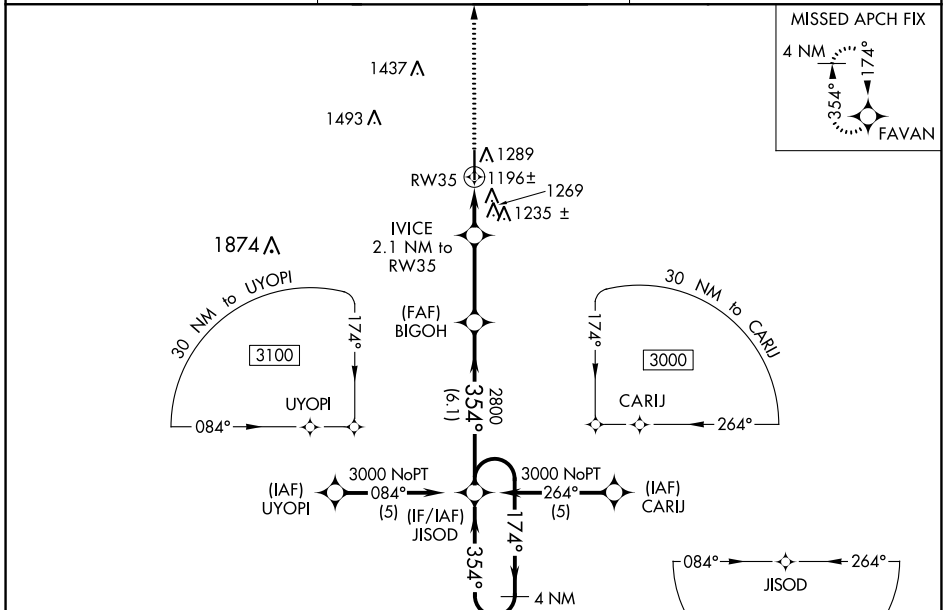
RNAV (GPS) RWY 35

SHAWNEE RGNL (SNL)

⚠ Baro-VNAV NA when using Seminole altimeter setting. For uncompensated Baro-VNAV systems, LNAV/VNAV NA below -17°C (2°F) or above 54°C (130°F). DME/DME RNP-0.3 NA. When local altimeter setting not received, use Seminole altimeter setting: increase LPV DA to 1357 feet; increase LNAV/VNAV DA to 1605 feet and visibility ¼ SM; increase all MDAs 40 feet and visibility Cat C ¼ SM.

MISSED APPROACH:
Climb to 3000 direct FAVAN and hold.

AWOS-3 118.275	OKE CITY APP CON 120.45 288.325	UNICOM 122.7 (CTAF)
--------------------------	---	-------------------------------



CATEGORY	A	B	C	D
LPV DA		1317-1	250 (300-1)	NA
LNAV/VNAV DA		1565-1¾	498 (500-1¾)	NA
LNAV MDA	1520-1	453 (500-1)	1520-1¼ 453 (500-1¼)	NA
C CIRCLING	1600-1	527 (600-1)	1640-1½ 567 (600-1½)	NA

SC-1, 22 FEB 2024 to 21 MAR 2024

SC-1, 22 FEB 2024 to 21 MAR 2024