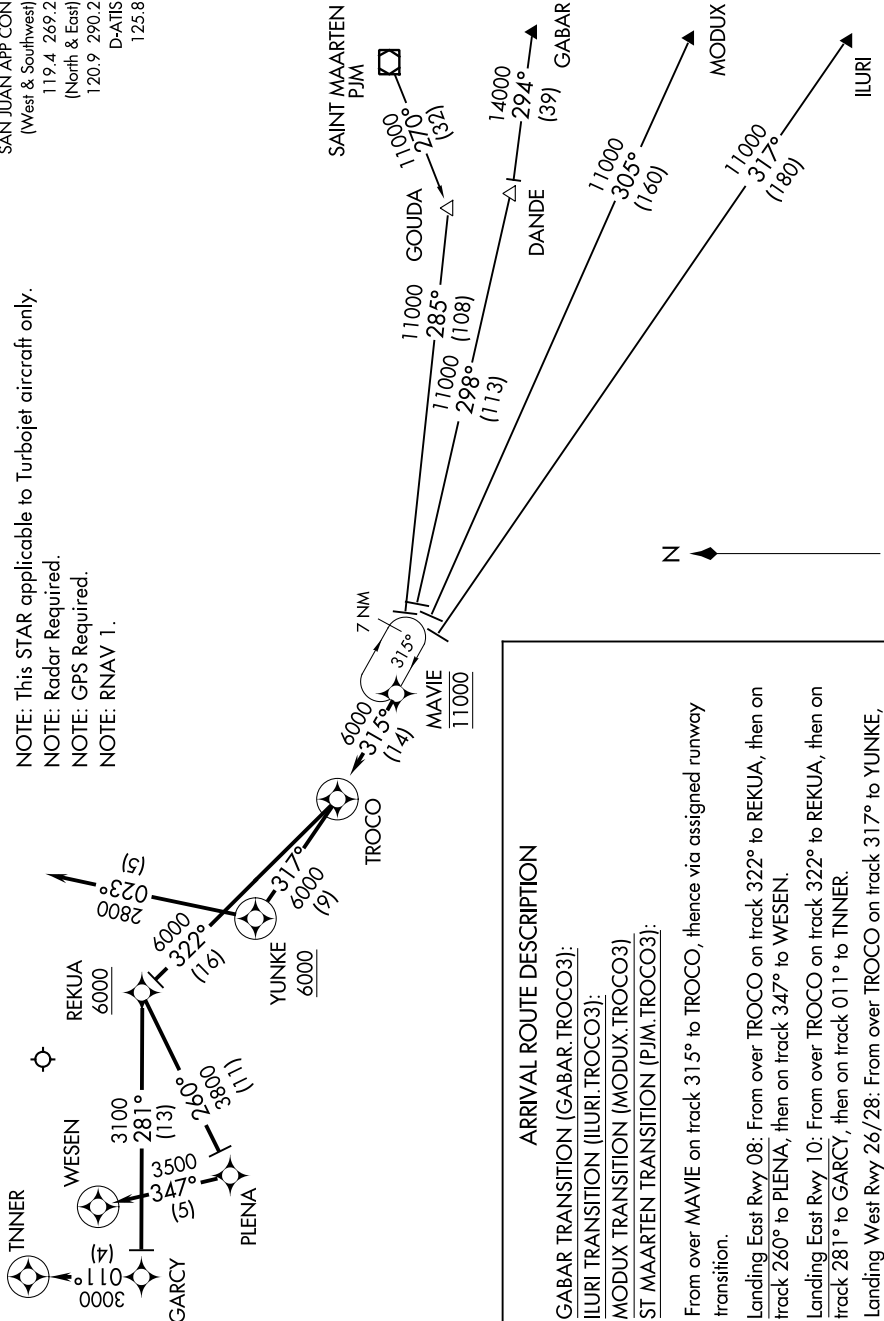


# TROCO THREE ARRIVAL (RNAV)

SAN JUAN APP CON  
(West & Southwest)  
119.4 269.2  
(North & East)  
120.9 290.2  
D-ATIS  
125.8

NOTE: This STAR applicable to Turbojet aircraft only.  
NOTE: Radar Required.  
NOTE: GPS Required.  
NOTE: RNAV 1.



**ARRIVAL ROUTE DESCRIPTION**

**GABAR TRANSITION (GABAR.TROCO3):**  
ILURI TRANSITION (ILURI.TROCO3):  
MODUX TRANSITION (MODUX.TROCO3)  
ST MAARTEN TRANSITION (PJM.TROCO3):

From over MAVIE on track 315° to TROCO, thence via assigned runway transition.

Landing East Rwy 08: From over TROCO on track 322° to REKUA, then on track 260° to PLENA, then on track 347° to WESEN.

Landing East Rwy 10: From over TROCO on track 322° to REKUA, then on track 281° to GARCIA, then on track 011° to TINNER.

Landing West Rwy 26/28: From over TROCO on track 317° to YUNKE, then heading 023°. Expect radar vectors.

NOTE: Chart not to scale.

SE-3, 22 FEB 2024 to 21 MAR 2024

SE-3, 22 FEB 2024 to 21 MAR 2024