

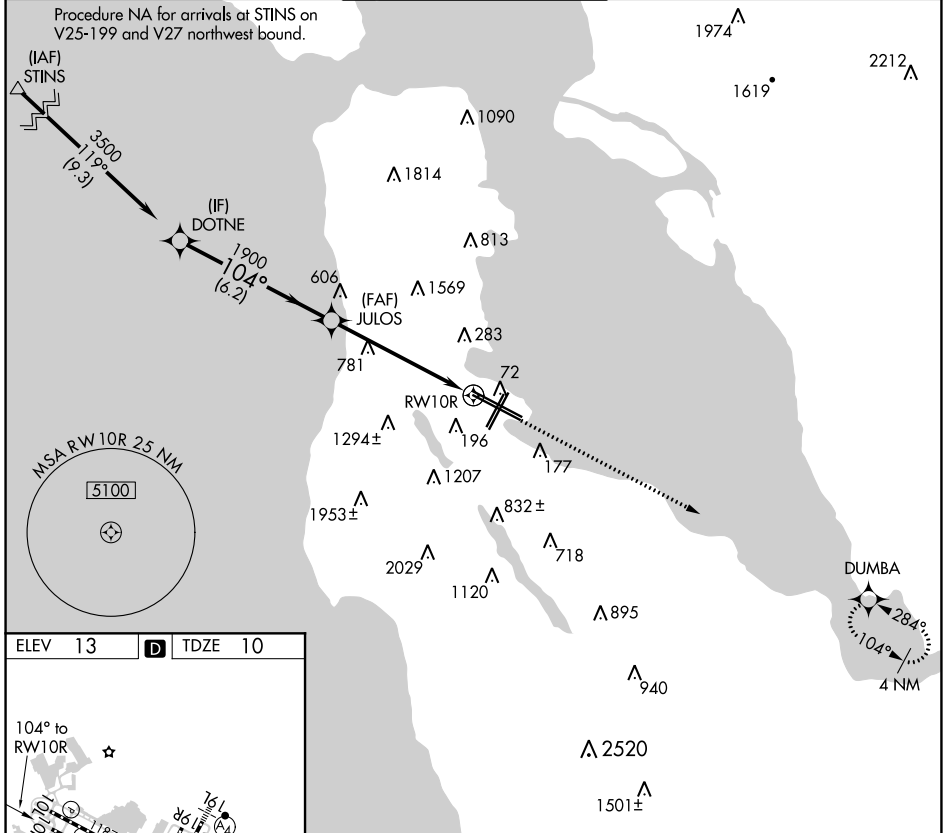
APP CRS	Rwy Idg	<b>10704</b>
<b>104°</b>	TDZE	<b>10</b>
	Apt Elev	<b>13</b>

# RNAV (GPS) Y RWY 10R

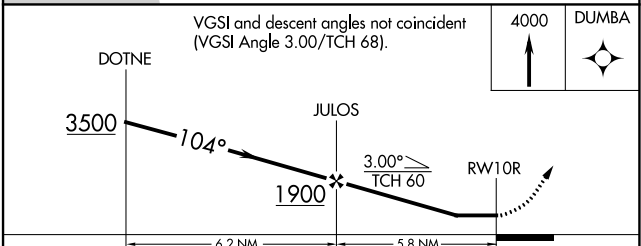
SAN FRANCISCO INTL (SFO)

**⚠** DME/DME RNP-0.3 NA. When VGSI inop, procedure NA at night. Helicopter visibility reduction below RVR 5000 NA. **MISSED APPROACH:** Climb to 4000 direct DUMBA and hold.

D-ATIS <b>113.7 115.8</b> <b>118.85</b>	NORCAL APP CON <b>134.5 338.2</b>	SAN FRANCISCO TOWER <b>120.5 269.1</b>	GND CON <b>121.8</b>	CLNC DEL <b>118.2</b>	CPDLC
---	--------------------------------------	---	-------------------------	--------------------------	-------



TDZ/CL Rwy 19L and 28R  
REIL Rwy 1L, 1R and 10L  
HIRL all Rwy



CATEGORY	A	B	C	D
RNAV MDA	1200/60 1190 (1200-1½)	1200-1½ 1190 (1200-1½)	1200-3	1190 (1200-3)

SW-2, 22 FEB 2024 to 21 MAR 2024

SW-2, 22 FEB 2024 to 21 MAR 2024