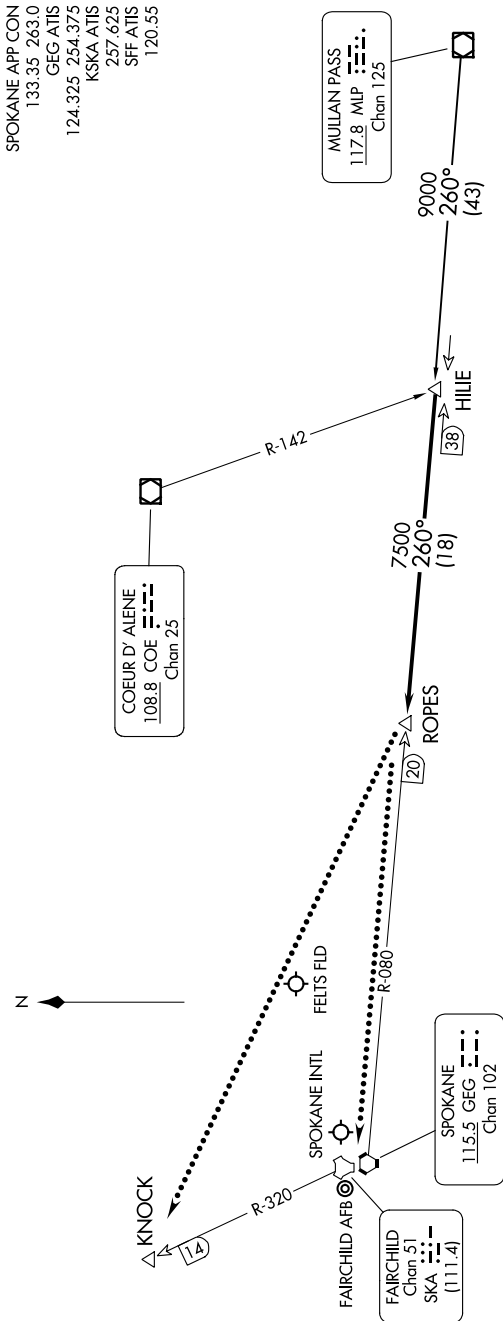


NW-1, 22 FEB 2024 to 21 MAR 2024



NOTE: DME and RADAR required.
NOTE: Chart not to scale.

ARRIVAL ROUTE DESCRIPTION

MULLAN PASS TRANSITION (MLP.HILIE3): From over MLP VOR/DME on MLP R-260 to HILIE. Thence
. . . . From over HILIE on SPOKANE VORTAC (GEG) R-080 to ROPEES. Expect RADAR vectors to final approach course.

LOST COMMUNICATIONS

After ROPEES:
LANDING SPOKANE INTL or FELTS FLD: Proceed to GEG VORTAC on GEG R-080, maintain last assigned altitude to GEG.
LANDING FAIRCHILD AFB: Proceed to KNOCK direct, maintain last assigned altitude to KNOCK.

NW-1, 22 FEB 2024 to 21 MAR 2024