

WAAS CH <b>77744</b> <b>W18A</b>	APP CRS <b>182°</b>	Rwy Idg TDZE Apt Elev	<b>5304</b> <b>4161</b> <b>4164</b>
--	------------------------	-----------------------------	---

# RNAV (GPS) RWY 18

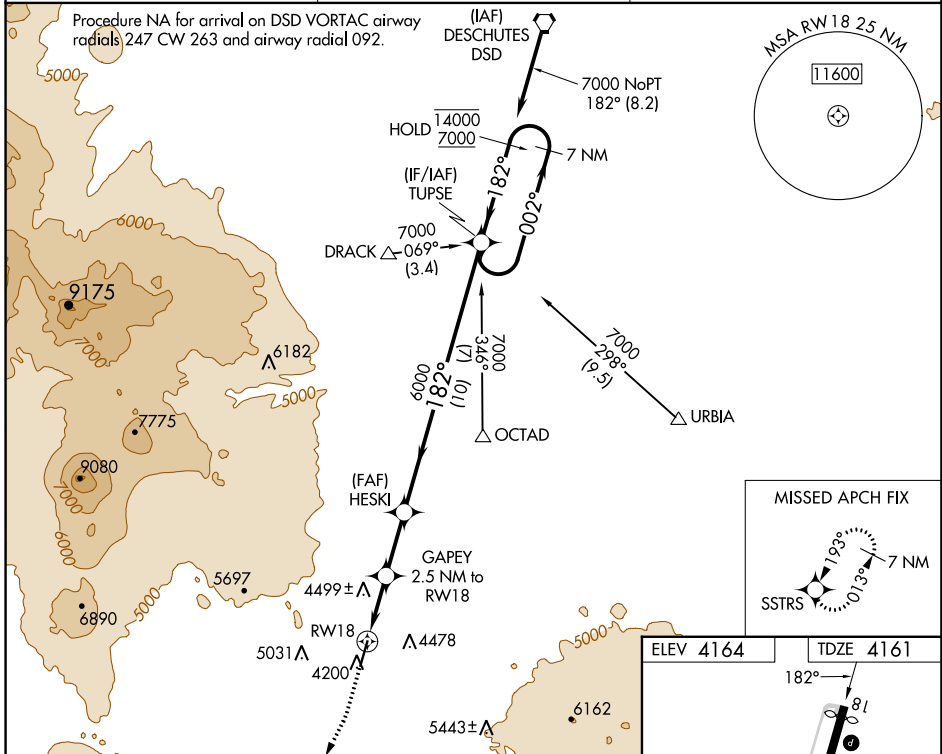
SUNRIVER (S21)

RNP APCH - GPS.

**⚠** Circling NA for Cat D west of Rwy 18-36. Rwy 18 helicopter visibility reduction below 3/4 SM NA. For uncompensated Baro-VNAV systems, LNAV/VNAV NA below -23°C or above 41°C.

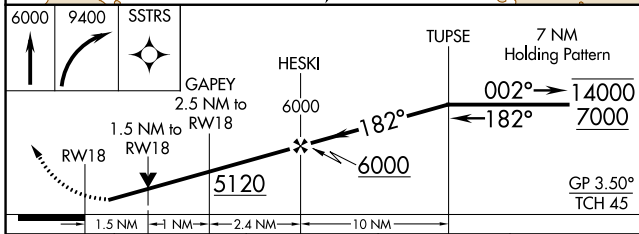
MISSED APPROACH: Climb to 6000 then climbing right turn to 9400 direct SSTRS and hold, continue climb-in-hold to 9400.

AWOS-3PT <b>128.325</b>	SEATTLE CENTER <b>126.15 269.475</b>	UNICOM <b>122.8 (CTAF) 0</b>
----------------------------	---	---------------------------------



NW-1, 22 FEB 2024 to 21 MAR 2024

NW-1, 22 FEB 2024 to 21 MAR 2024



ELEV 4164	TDZE 4161
-----------	-----------

CATEGORY	A	B	C	D
LPV DA		4431-7/8	270 (300-7/8)	
LNAV/VNAV DA		4760-1 3/4	599 (600-1 3/4)	
LNAV MDA	4760-1	599 (600-1)	4760-1 3/4	599 (600-1 3/4)
<b>C</b> CIRCLING	4900-1 736 (800-1)	5140-1 1/2 976 (1000-1 1/2)	5660-3	1496 (1500-3)

MRL Rwy 18-36 0	REIL Rws 18 and 36 0
-----------------	----------------------