

WAAS CH <b>40238</b> <b>W27A</b>	APP CRS <b>273°</b>	Rwy Idg <b>3641</b> TDZE <b>708</b> Apt Elev <b>708</b>
--	------------------------	--

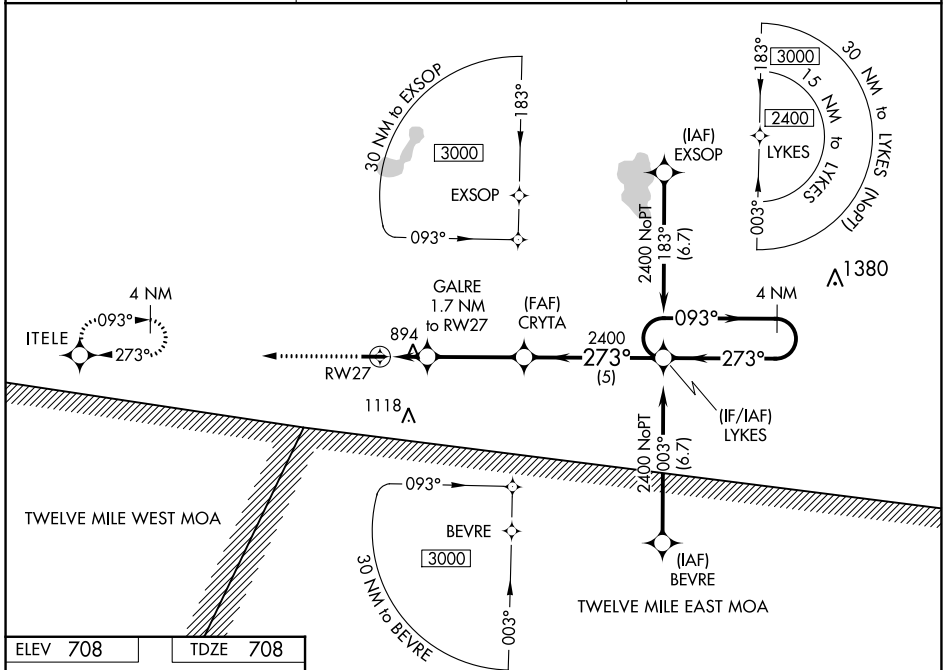
# RNAV (GPS) RWY 27

ARENS FLD (RWN)

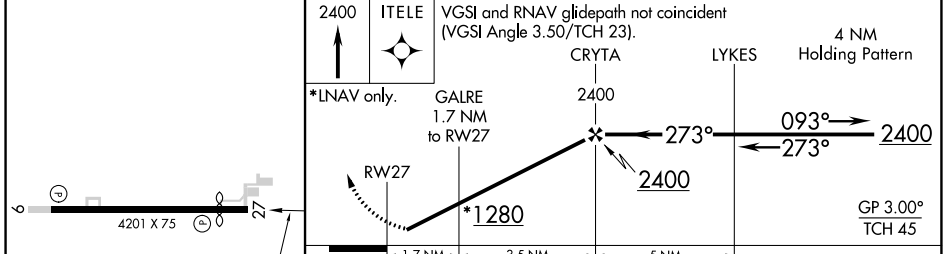
**NA** Baro-VNAV NA. Use Knox altimeter setting; when not received, use Rochester altimeter setting and increase all DA/MDA 20 feet and LNAV/VNAV all Cals visibility 1/8 mile. DME/DME RNP-0.3 NA. Helicopter visibility reduction below 3/4 SM NA.

MISSED APPROACH: Climb to 2400 direct ITELE and hold.

OXI AWOS-3 <b>135.775</b>	SOUTH BEND APP CON * <b>132.05 257.8</b>	UNICOM <b>122.8 (CTAF) 0</b>
------------------------------	---	---------------------------------



ELEV <b>708</b>	TDZE <b>708</b>
-----------------	-----------------



CATEGORY	A	B	C	D
LPV DA	995-1		287 (300-1)	NA
LNAV/VNAV DA	1224-1 <sup>3</sup> / <sub>4</sub>		516 (600-1 <sup>3</sup> / <sub>4</sub> )	NA
LNAV MDA	1200-1	492 (500-1)	1200-1 <sup>3</sup> / <sub>8</sub> 492 (500-1 <sup>3</sup> / <sub>8</sub> )	NA
<b>C</b> CIRCLING	1240-1	532 (600-1)	1480-2 <sup>1</sup> / <sub>4</sub> 772 (800-2 <sup>1</sup> / <sub>4</sub> )	NA

EC-2, 22 FEB 2024 to 21 MAR 2024

EC-2, 22 FEB 2024 to 21 MAR 2024