

WAAS CH 40218 W36A	APP CRS 360°	Rwy Idg 5001 TDZE 1003 Apt Elev 1003
--	------------------------	---

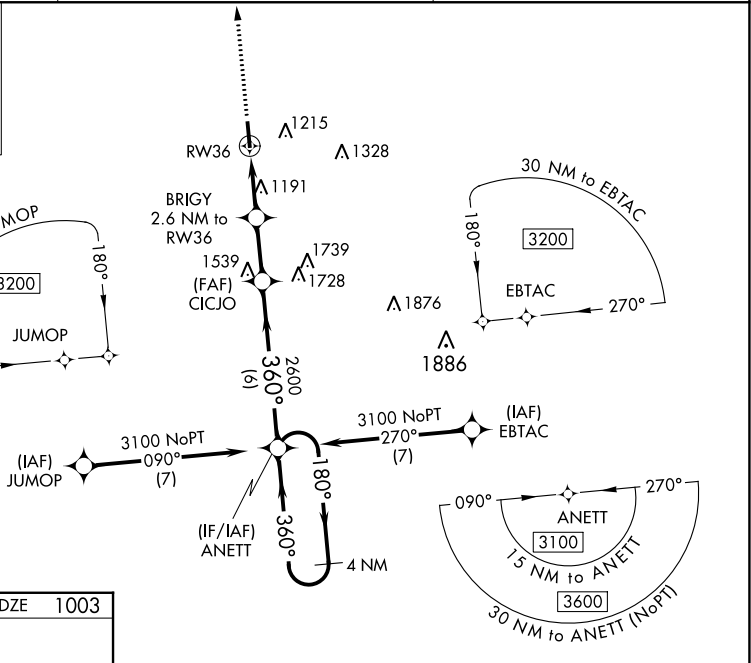
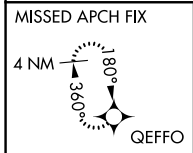
RNAV (GPS) RWY 36

CENTRAL KENTUCKY RGNL (R.G.A)

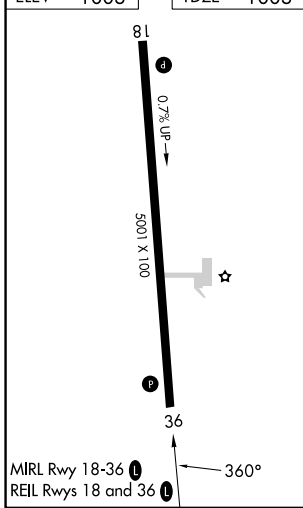
⚠ For uncompensated Baro-VNAV systems, LNAV/VNAV NA below -16°C (4°F) or above 54°C (130°F). DME/DME RNP-0.3 NA. When local altimeter setting not received, use Lexington altimeter setting and increase LPV DA to 1331 feet, LNAV/VNAV DA to 1345 feet and all MDA 80 feet; increase LPV all Cats and LNAV/VNAV all Cats visibility ¼ mile; increase LNAV Cats C and D ½ mile and Circling visibility Cat D ¼ mile. Helicopter visibility reduction below ¼ SM NA. VDP and Baro-VNAV NA when using Lexington altimeter setting.

MISSED APPROACH: Climb to 3100 direct QEFFO and hold.

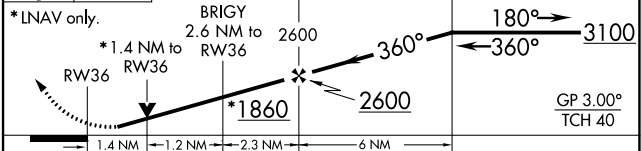
AWOS-3 119.625	LEXINGTON APP CON 120.15 259.3	UNICOM 122.725 (CTAF) 0
--------------------------	--	-----------------------------------



ELEV 1003	TDZE 1003
-----------	-----------



3100 QEFFO VGSI and RNAV glidepath not coincident (VGSI Angle 3.00/TCH 27). 4 NM Holding Pattern



CATEGORY	A	B	C	D
LPV DA		1264-7/8	261 (300-7/8)	
LNAV/VNAV DA		1278-7/8	275 (300-7/8)	
LNAV MDA	1460-1	457 (500-1)	1460-1 3/8	457 (500-1 3/8)
C CIRCLING	1460-1 457 (500-1)	1520-1 517 (600-1)	1520-1 1/2 517 (600-1 1/2)	1780-2 1/2 777 (800-2 1/2)

SE-1, 22 FEB 2024 to 21 MAR 2024

SE-1, 22 FEB 2024 to 21 MAR 2024