

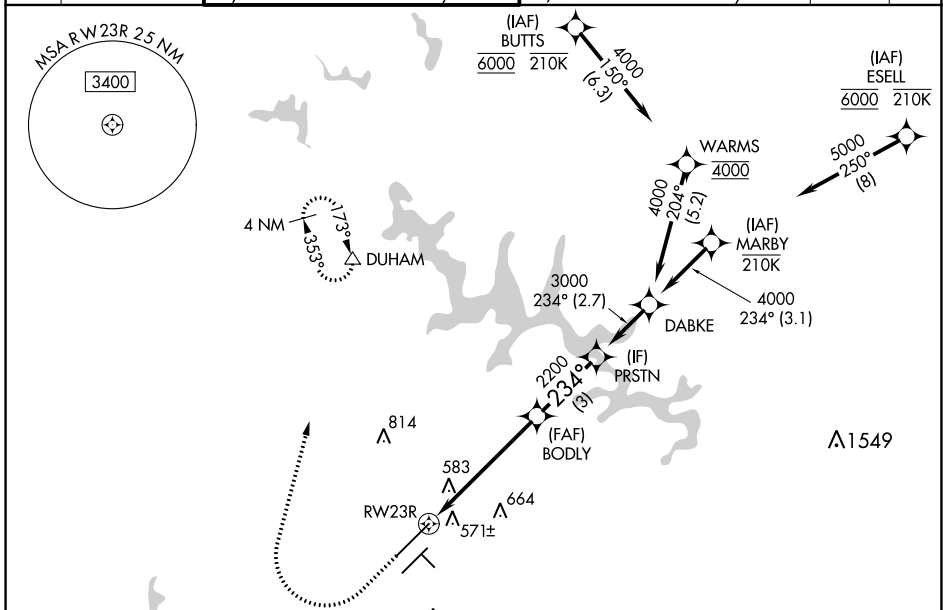
WAAS CH 45613 W23A	APP CRS 234°	Rwy Idg 10000 TDZE 409 Apt Elev 435
--	------------------------	--

RNAV (GPS) Y RWY 23R

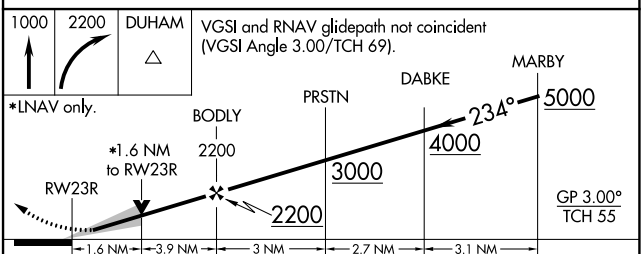
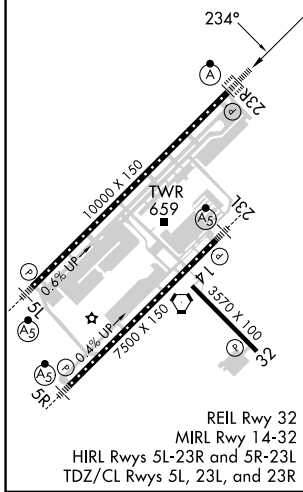
RALEIGH-DURHAM INTL (RDU)

RNP APCH - GPS.	<p>Simultaneous approach authorized. LNAV procedure NA during simultaneous operations.</p> <p>Use of FD or AP providing RNAV track guidance required during simultaneous operations.</p> <p>For uncompensated Baro-VNAV systems, LNAV/VNAV NA below -12°C or above 54°C.</p> <p>For inop ALS, increase LNAV Cat C/D visibility to 1% SM.</p>	<p>ALSf-2</p>	<p>MISSED APPROACH: Climb to 1000 then climbing right turn to 2200 direct DUHAM and hold.</p>
-----------------	--	---------------	---

D-ATIS RALEIGH APP CON 123.8 127.675 307.9	(EAST) RALEIGH TOWER (WEST) 127.45 257.8 119.3 257.8 Rwys 5R-23L and 1-4-32 Rwy 5L-23R	(EAST) GND CON (WEST) 121.9 348.6 121.7 348.6 Rwys 5R-23L and 1-4-32 Rwy 5L-23R	CLNC DEL 120.1	CPDLC
--	---	--	--------------------------	-------



ELEV 435	D	TDZE 409
-----------------	----------	-----------------



CATEGORY	A	B	C	D
LPV DA		609/18	200 (200-1/2)	
LNAV/VNAV DA		735/26	326 (300-1/2)	
LNAV MDA	980/24	571 (600-1/2)	980-1 1/4	571 (600-1 1/4)
C CIRCLING	980-1	545 (600-1)	1020-1 5/8 585 (600-1 5/8)	1180-2 1/2 745 (800-2 1/2)

SE-2, 22 FEB 2024 to 21 MAR 2024

SE-2, 22 FEB 2024 to 21 MAR 2024