

LOC/DME I-PSC 108.7 Chan 24	APP CRS 211°	Rwy Idg TDZE Apt Elev	7110 403 410
--	------------------------	-----------------------------	---

ILS or LOC RWY 21R

TRI-CITIES (PSC)

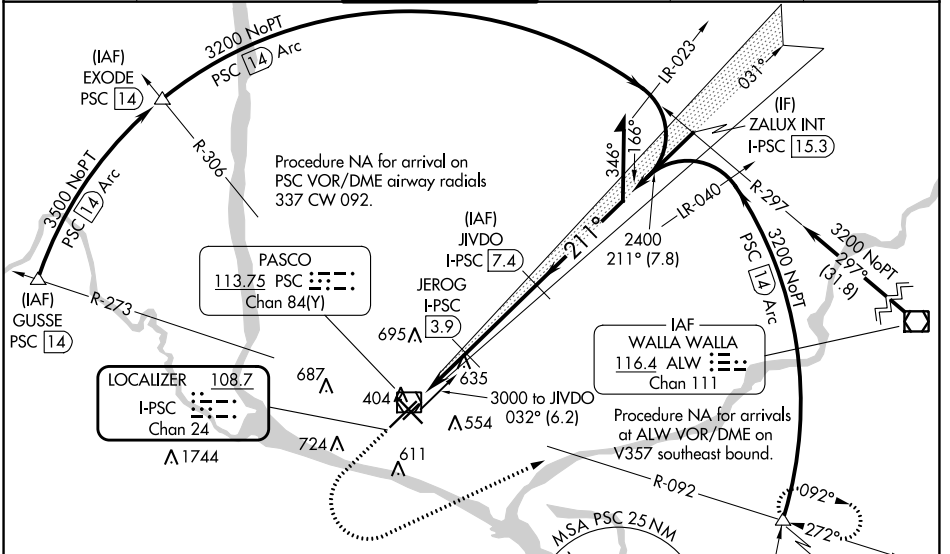
DME required for LOC only.
DME required for procedure entry at GUSSE, EXODE, CITYS, PSC VOR/DME.

V VDP NA when using Hermiston altimeter setting. For inop ALS when using Hermiston altimeter setting, increase S-ILS 21R all Cats visibility to RVR 4500, increase S-LOC 21R Cats C and D visibility to 1 3/4 SM. When local altimeter setting not received, use Hermiston altimeter setting: increase DA to 698 feet and all MDAs 100 feet; increase S-LOC 21R Cat C and D visibility 3/4 SM and Circling Cat C and D visibility 1/4 SM. * RVR 1800 authorized with use of FD or AP or HUD to DA (NA when using Hermiston altimeter setting).

MALSR

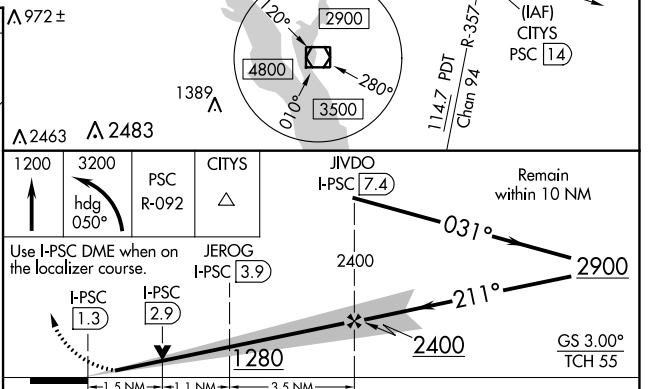
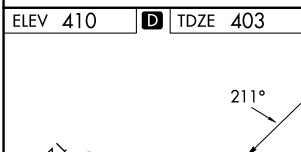
MISSED APPROACH:
Climb to 1200 then climbing left turn to 3200 on heading 050° and PSC VOR/DME R-092 to CITYS INT/PSC VOR/DME 1.4 DME and hold.

ATIS 125.65	SPOKANE APP CON * 128.75 377.2	TRI-CITIES TOWER * 135.3 (CTAF) 323.3	GND CON 121.8	CLNC DEL 120.0	UNICOM 122.95
-----------------------	--	---	-------------------------	--------------------------	-------------------------



NW-1, 22 FEB 2024 to 21 MAR 2024

NW-1, 22 FEB 2024 to 21 MAR 2024



REIL Rwy 3L and 12	MIRL Rwy 12-30	HIRL Rwy 3L-21R		
CATEGORY	A	B	C	D
S-ILS 21R*	603/24 200 (200-1/2)			
S-LOC 21R	940/24	537 (600-1/2)	940/55	537 (600-1)
C CIRCLING	940-1	530 (600-1)	1040-1 3/4 630 (700-1 3/4)	1100-2 1/4 690 (700-2 1/4)