

MAYNR ONE DEPARTURE (RNAV)
 (MAYNR1, MAYNR) 19MAY22

POMPAÑO BEACH AIRPARK (PMP)
 POMPAÑO BEACH, FLORIDA

ATIS
 120.55
 GND CON
 121.9
 POMPAÑO BEACH TOWER ★
 125.4 (CTAF)
 MIAMI DEP CON
 126.05 251.1

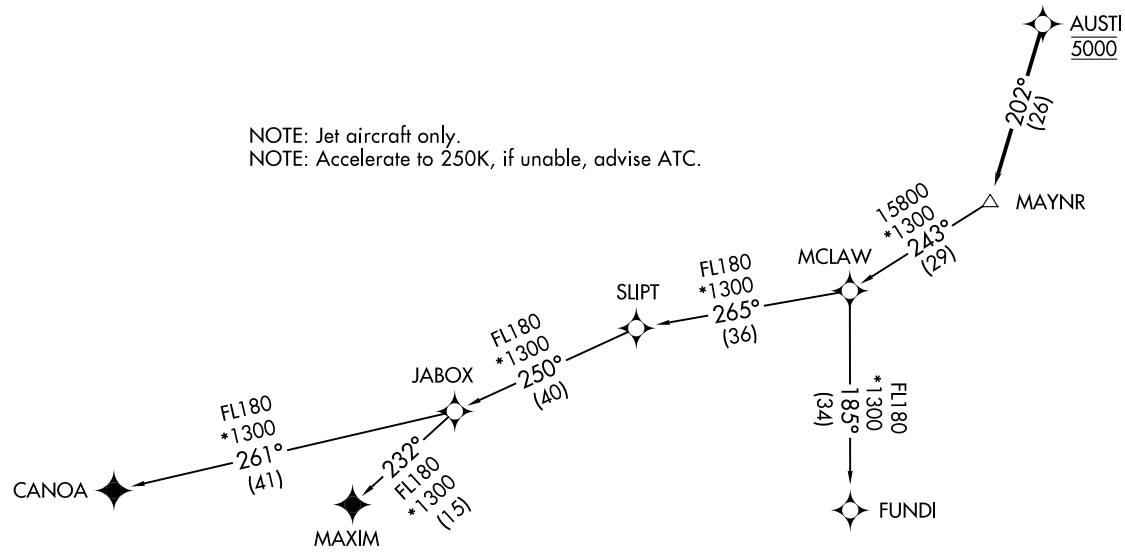
RNAV1 - DME/DME/IRU or GPS.
 From SLIPT to MAXIM: RNAV 1- GPS.
 From SLIPT to CANOA: RNAV 1- GPS.
 RADAR required.

**TOP ALTITUDE:
 ASSIGNED BY ATC**



TAKEOFF MINIMUMS
 Rws 6, 10, 15, 24, 28, 33: Standard with minimum climb of 500' per NM to 520.

NOTE: Jet aircraft only.
 NOTE: Accelerate to 250K, if unable, advise ATC.



NOTE: Chart not to scale.

(NARRATIVE ON FOLLOWING PAGE)

(MAYNR1, MAYNR) 22139
 MAYNR ONE DEPARTURE (RNAV)

POMPAÑO BEACH AIRPARK (PMP)
 POMPAÑO BEACH, FLORIDA

AL-5972 (FAA)

MAYNR ONE DEPARTURE (RNAV)



DEPARTURE ROUTE DESCRIPTION

TAKEOFF RUNWAYS 6, 10, 15, 24, 28, 33: Climb on heading assigned by ATC for vectors to cross AUSTI at 5000, thence. . . .

. . . .on track 202° to MAYNR, then on assigned transition, maintain altitude as assigned by ATC, expect clearance to filed altitude within 10 minutes after departure.

CANOA TRANSITION (MAYNR1.CANOA)

FUNDI TRANSITION (MAYNR1.FUNDI)

MAXIM TRANSITION (MAYNR1.MAXIM)

SE-3, 22 FEB 2024 to 21 MAR 2024

SE-3, 22 FEB 2024 to 21 MAR 2024