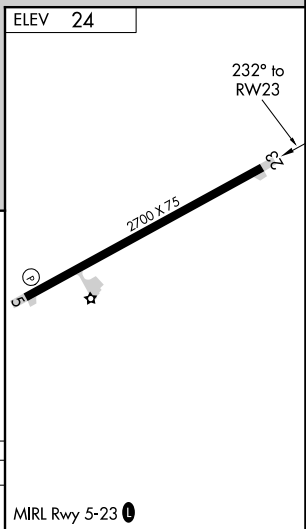
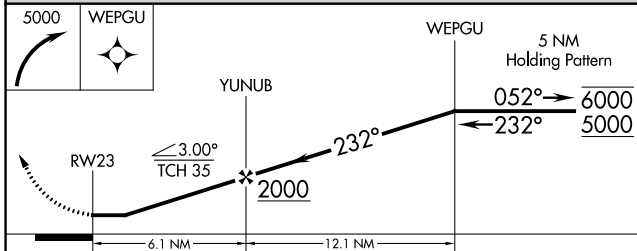
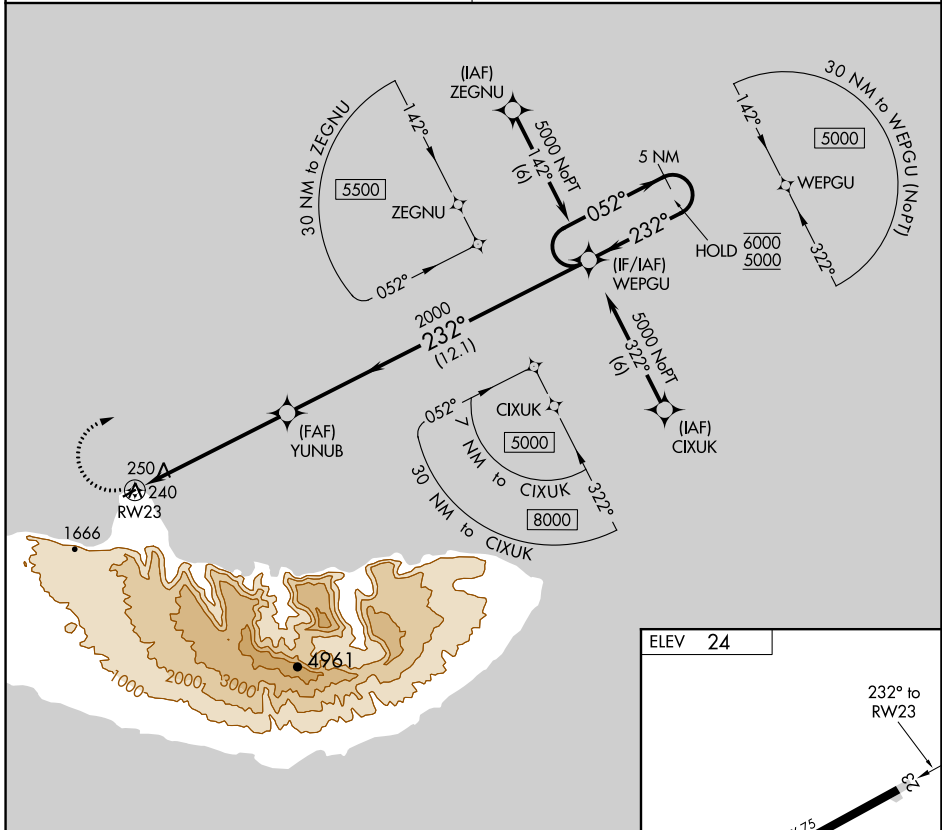


APP CRS	Rwy Idg	N/A
232°	TDZE	N/A
	Apt Elev	24

RNAV (GPS)-A

KALAUPAPA (LUP) (PHLU)

RNP APCH.	MISSED APPROACH: Climbing right turn to 5000 direct WEPGU and hold, continue climb-in-hold to 5000.
<p>▼ Circling NA southeast of Rwy 5-23.</p> <p>▲ NA Procedure NA at night.</p> <p>Use Kaunakakai altimeter setting.</p>	
HCF CENTER 124.1 317.5	CTAF 122.9



CATEGORY	A	B	C	D
CIRCLING	660-1	636 (700-1)	NA	

MIRL Rwy 5-23

PAC, 25 JAN 2024 to 21 MAR 2024

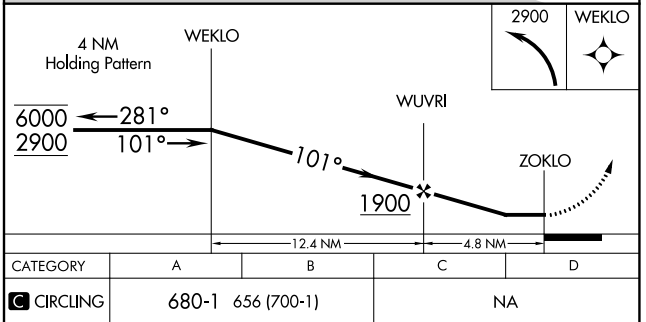
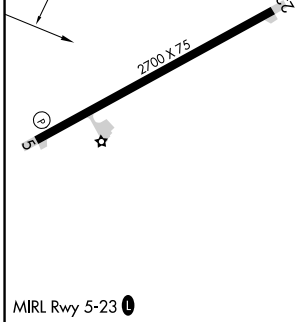
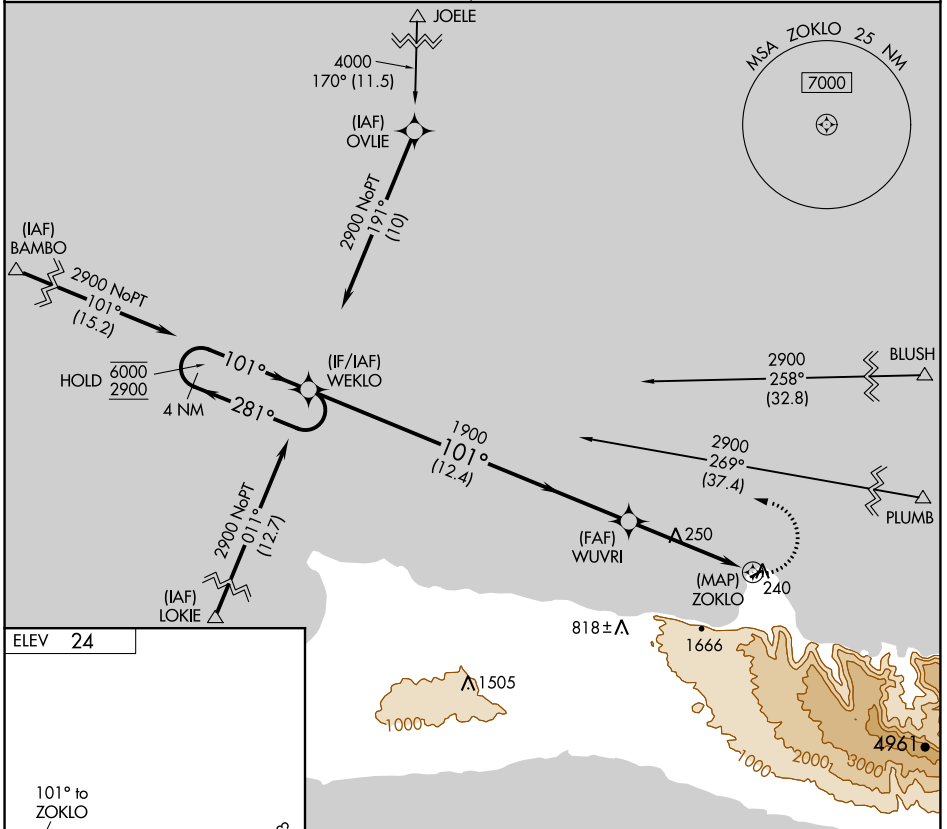
PAC, 25 JAN 2024 to 21 MAR 2024

APP CRS	Rwy Idg	N/A
101°	TDZE	N/A
	Apt Elev	24

RNAV (GPS)-B

KALAUPAPA (LUP) (PHLU)

RNP APCH.	MISSED APPROACH: Climbing left turn to 2900 direct WEKLO and hold.
<p>▼ Circling NA southeast of Rwy 5-23. ▲ NA Procedure NA at night. Use Kaunakakai altimeter setting.</p>	
HCF CENTER 124.1 317.5	CTAF 122.9



PAC, 25 JAN 2024 to 21 MAR 2024

PAC, 25 JAN 2024 to 21 MAR 2024