

(KAYAK.KAYAK6) 24025
KAYAK SIX ARRIVAL

ELLISON ONIZUKA KONA INTL AT KEAHOLE (KOAA) (PHKO)
AL-5761 (FAA)
KAILUA-KONA, HAWAII

HCF CENTER
119.3 307.1 (LNY, FIRES)
124.1 317.5 (MKK)
118.45 278.3 (OKALA, OHOHI, UPP)
KONA TOWER*
120.3
ATIS 127.4

MOLOKAI
116.1 MKK
Chan 108

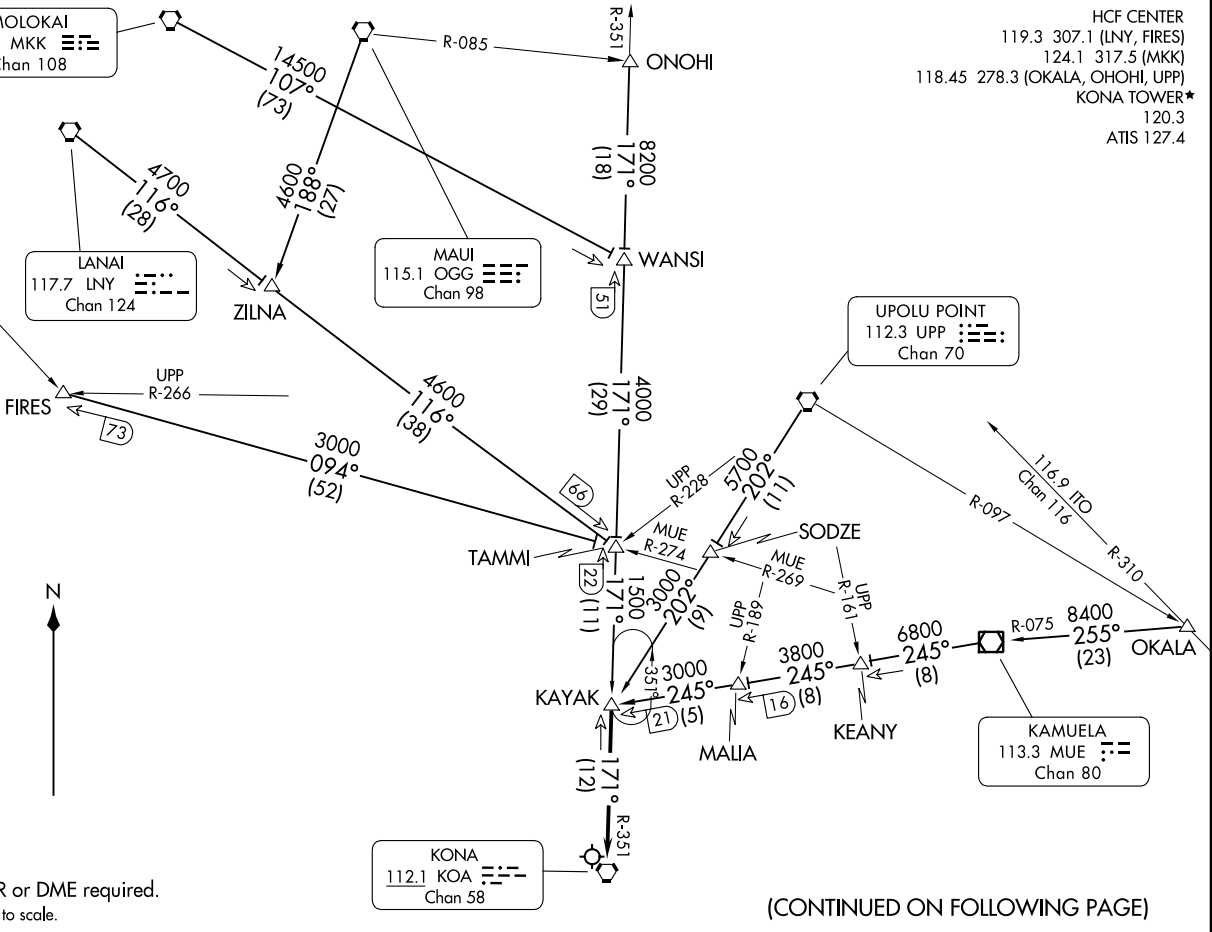
LANAI
117.7 LNY
Chan 124

MAUI
115.1 OGG
Chan 98

UPOLU POINT
112.3 UPP
Chan 70

KAMUELA
113.3 MUE
Chan 80

KONA
112.1 KOA
Chan 58



KAYAK SIX ARRIVAL
(KAYAK.KAYAK6) 07DEC17

ELLISON ONIZUKA KONA INTL AT KEAHOLE (KOAA) (PHKO)
KAILUA-KONA, HAWAII

NOTE: RADAR or DME required.
NOTE: Chart not to scale.

(CONTINUED ON FOLLOWING PAGE)

ARRIVAL ROUTE DESCRIPTION

FIRES TRANSITION (FIRES.KAYAK6): From over FIRES on MUE R-274 to TAMMI , then on KOA R-351 to KAYAK . Thence. . . .

LANAI TRANSITION (LNY.KAYAK6): From over LNY VORTAC on LNY R-116 to TAMMI , then on KOA R-351 to KAYAK . Thence. . . .

MAUI TRANSITION (OGG.KAYAK6): From over OGG VORTAC on OGG R-188 to ZILNA, then on LNY R-116 to TAMMI , then on KOA R-351 to KAYAK . Thence. . . .

MOLOKAI TRANSITION (MKK.KAYAK6): From over MKK VORTAC on MKK R-107 and KOA R-351 to TAMMI , then on KOA R-351 to KAYAK . Thence. . . .

OKALA TRANSITION (OKALA.KAYAK6): From over OKALA on MUE VOR/DME R-075 to MUE VOR/DME, then on MUE R-245 to KAYAK . Thence. . . .

ONOHI TRANSITION (ONOHI.KAYAK6): From over ONOHI on KOA R-351 to KAYAK. Thence. . . .

UPOLU POINT TRANSITION (UPP.KAYAK6): From over UPP VORTAC on UPP R-202 to KAYAK . Thence. . . .

. . . .From over KAYAK on KOA R-351 to KOA VORTAC. Expect RADAR vectors.

LOST COMMUNICATIONS: At KAYAK proceed on VOR/DME or TACAN RWY 17 approach.

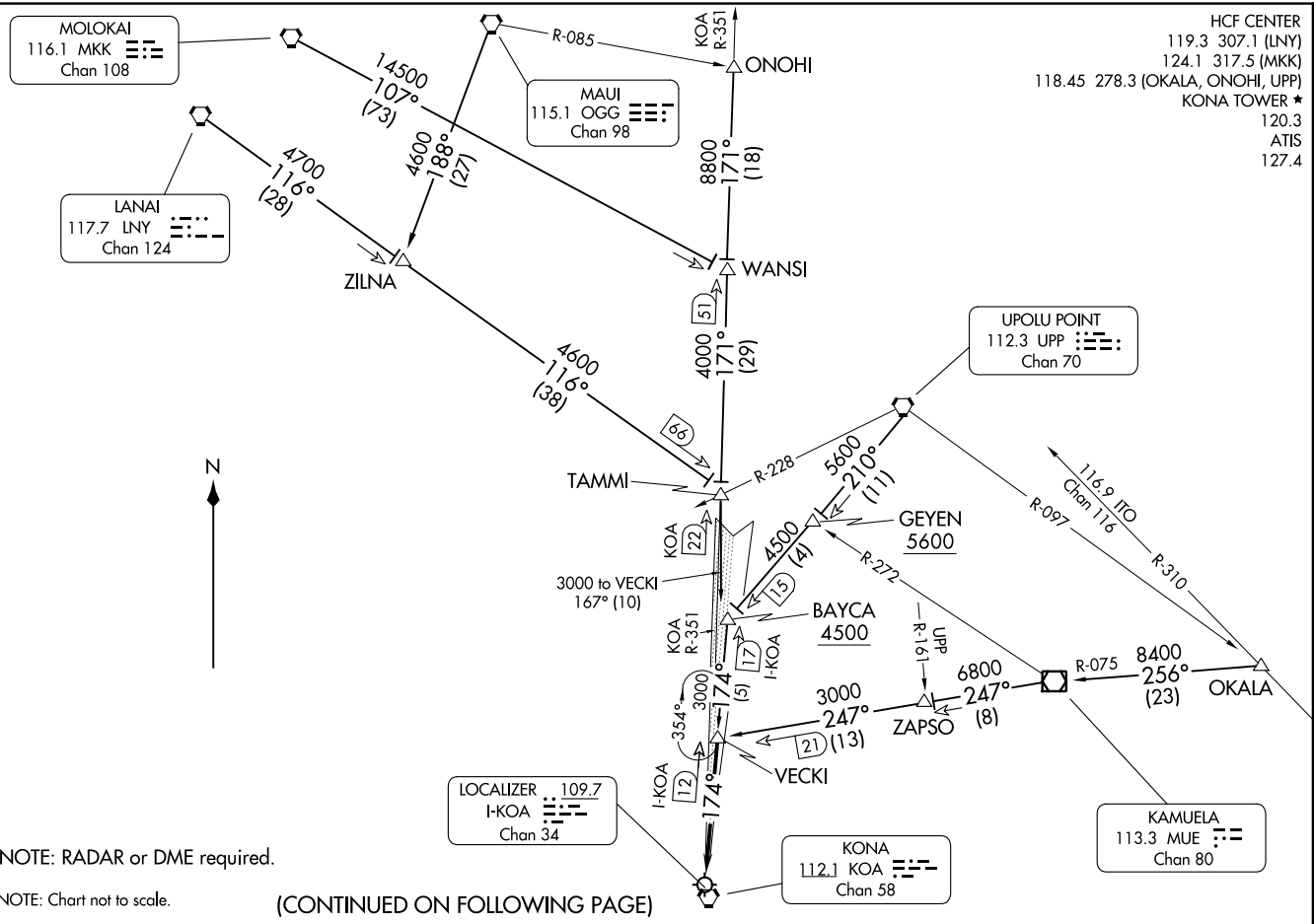
PAC, 25 JAN 2024 to 21 MAR 2024

PAC, 25 JAN 2024 to 21 MAR 2024

(VECKI, VECKI9) 24025
VECKI NINE ARRIVAL

ELIUSON ONIZUKA KONA INTL AT KEAHOLE (KOA) (PHKO)
KALIUA-KONA, HAWAII
AL-5761 (FAA)

HCF CENTER
119.3 307.1 (LNY)
124.1 317.5 (MKK)
118.45 278.3 (OKALA, ONOHI, UPP)
KONA TOWER ★
120.3
ATIS
127.4



VECKI NINE ARRIVAL
(VECKI, VECKI9) 07DEC17

ELIUSON ONIZUKA KONA INTL AT KEAHOLE (KOA) (PHKO)
KALIUA-KONA, HAWAII

NOTE: RADAR or DME required.

NOTE: Chart not to scale.

(CONTINUED ON FOLLOWING PAGE)

ARRIVAL ROUTE DESCRIPTION

LANAI TRANSITION (LNY.VECKI9): From over LNY VORTAC on LNY R-116 to TAMMI , then on heading 167° to VECKI . Thence

MAUI TRANSITION (OGG.VECKI9): From over OGG VORTAC on OGG R-188 to ZILNA , then on LNY R-116 to TAMMI , then on heading 167° to VECKI . Thence

MOLOKAI TRANSITION (MKK.VECKI9): From over MKK VORTAC on MKK R-107 to WANSI , then on KOA R-351 to TAMMI , then on heading 167° to VECKI . Thence

OKALA TRANSITION (OKALA.VECKI9): From over OKALA on MUE VOR/DME R-075 to MUE VOR/DME, then on MUE R-247 to VECKI . Thence

ONOHI TRANSITION (ONOHI.VECKI9): From over ONOHI on KOA R-351 to TAMMI , then on heading 167° to VECKI . Thence

UPOLU POINT TRANSITION (UPP.VECKI9): From over UPP VORTAC on UPP R-210 to BAYCA , then on I-KOA 174° course to VECKI . Thence

. . . . from over VECKI INT on I-KOA localizer course to Ellison Onizuka Kona Intl at Keahole.

LOST COMMUNICATIONS: At VECKI INT proceed with ILS or LOC/DME RWY 17 approach.

PAC, 25 JAN 2024 to 21 MAR 2024

PAC, 25 JAN 2024 to 21 MAR 2024