

RNAV (GPS) RWY 14

PORT HEIDEN (PTH)(PAPH)

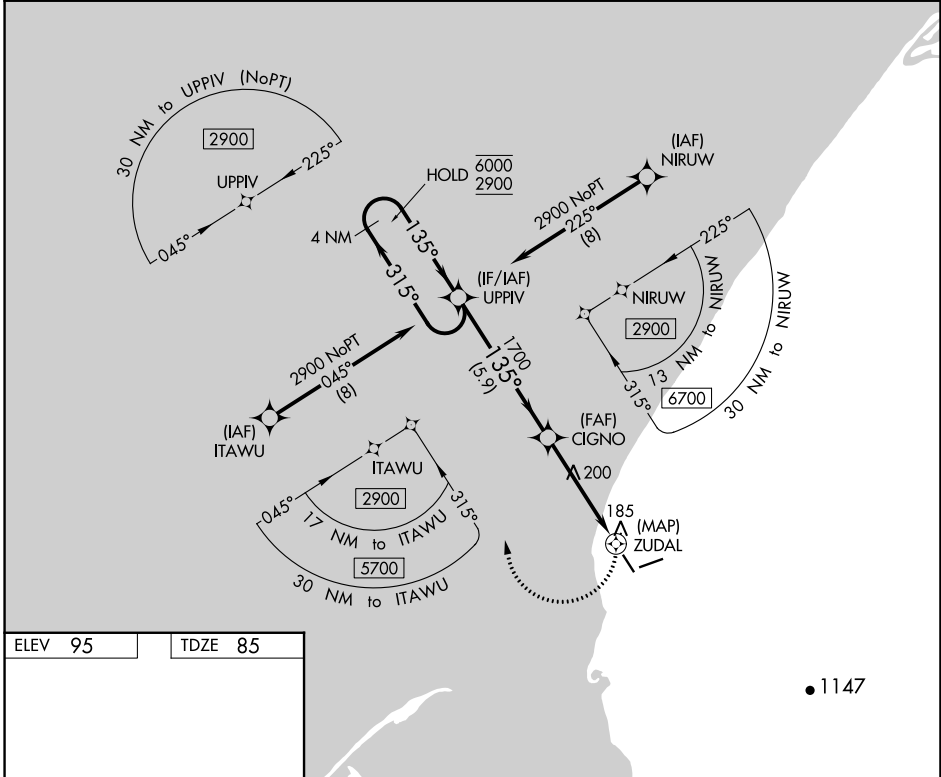
APP CRS 135°	Rwy Idg 4000
	TDZE 85
	Apt Elev 95

RNP APCH.

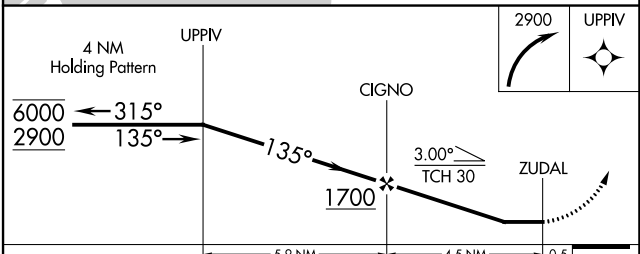
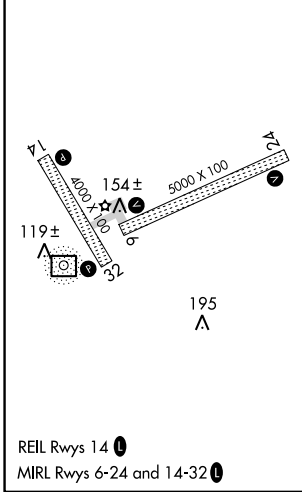
⚠ Rwy 14 helicopter visibility reduction below 1 SM NA.

MISSED APPROACH: Climbing right turn to 2900 direct UPPIV and hold, continue climb-in-hold to 2900.

AWOS-3P 135.4	ANCHORAGE CENTER 132.9 288.3	CTAF 122.8
-------------------------	--	----------------------



ELEV 95	TDZE 85
---------	---------



CATEGORY	A	B	C	D
LNAV MDA	500-1	415 (500-1)	500-1½	415 (500-1½)
ⓐ CIRCLING	500-1 405 (500-1)	560-1 465 (500-1)	560-1½ 465 (500-1½)	700-2 605 (700-2)

AK, 25 JAN 2024 to 21 MAR 2024

AK, 25 JAN 2024 to 21 MAR 2024

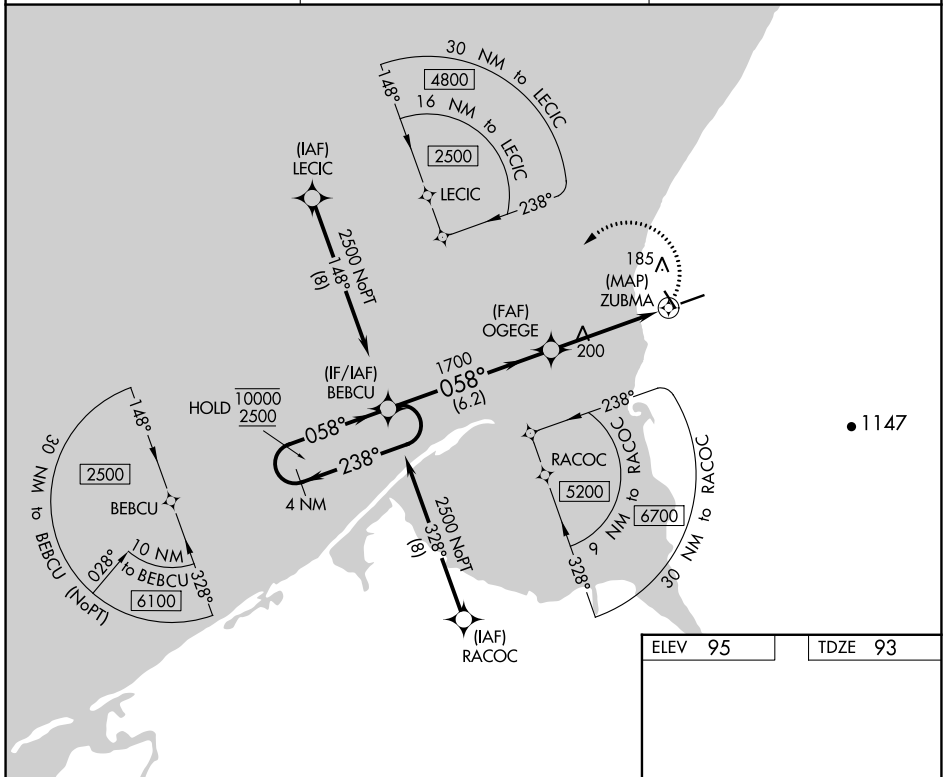
RNAV (GPS) RWY 6

PORT HEIDEN (PTH)(PAPH)

APP CRS	Rwy Idg	5000
058°	TDZE	93
	Apt Elev	95

RNP APCH.	MISSED APPROACH: Climbing left turn to 2500 direct BEBCU and hold.
Rwy 6 helicopter visibility reduction below 1 SM NA.	

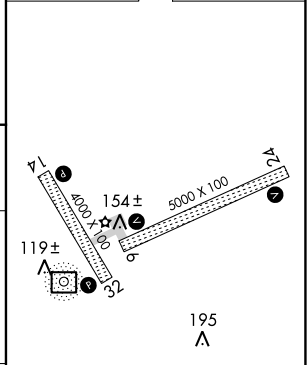
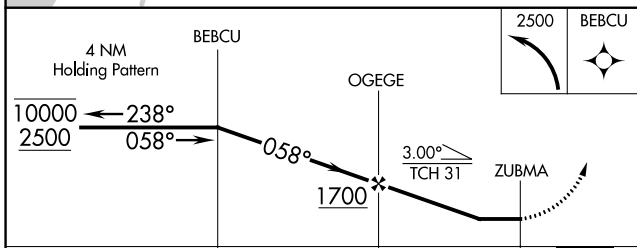
AWOS-3P 135.4	ANCHORAGE CENTER 132.9 288.3	CTAF 122.8
-------------------------	--	----------------------



AK, 25 JAN 2024 to 21 MAR 2024

AK, 25 JAN 2024 to 21 MAR 2024

ELEV 95	TDZE 93
---------	---------



CATEGORY	A	B	C	D
LNVA MDA	500-1	407 (500-1)	500-1½	407 (500-1½)
CIRCLING	500-1 405 (500-1)	560-1 465 (500-1)	560-1½ 465 (500-1½)	700-2 605 (700-2)

REIL Rwys 14

MIRL Rwys 6-24 and 14-32