

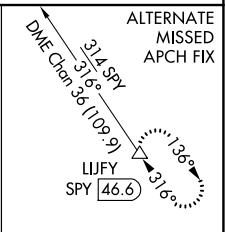
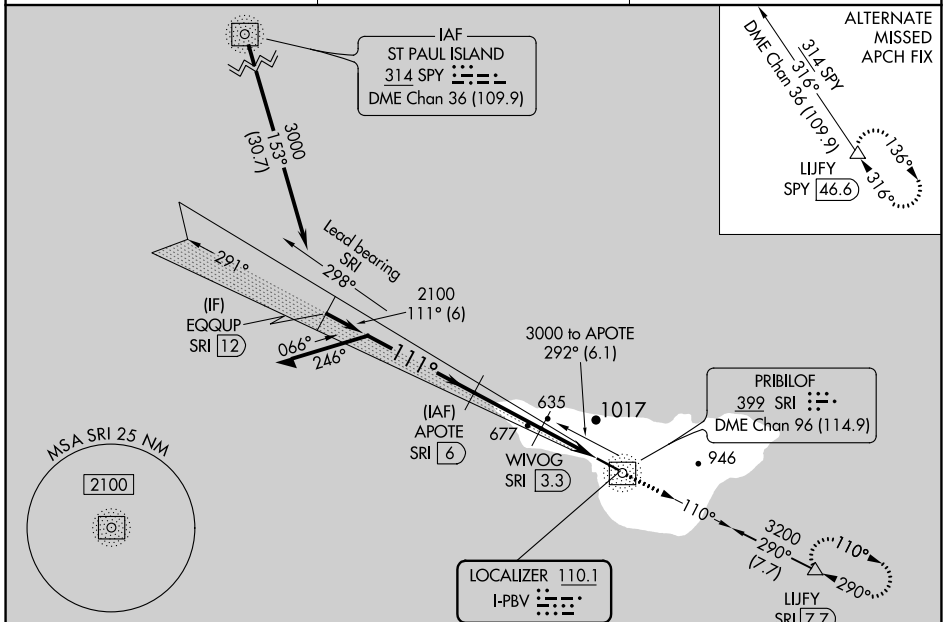
LOC I-PBV <b>110.1</b>	APP CRS <b>111°</b>	Rwy Idg <b>4982</b>
		TDZE <b>128</b>
		Apt Elev <b>128</b>

# ILS or LOC RWY 11

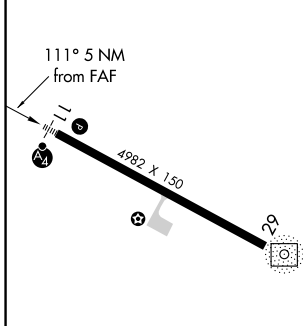
ST GEORGE (PBV) (PAPB)

<p><b>⚠</b> DME from SRI NDB/DME. Simultaneous reception of I-PBV and SRI DME required. Circling NA north of Rwy 11-29. ADF and DME required. Inop table does not apply to S-LOC 11 Cats A and B and S-ILS 11 all Cats.</p>	<p><b>MALSF</b></p>	<p><b>MISSED APPROACH:</b> Climb to 3200 on SRI NDB/DME bearing 110° to LIJFY/SRI 7.7 DME and hold, continue climb-in-hold to 3200.</p>
---	---------------------	---

ASOS <b>135.45</b>	ANCHORAGE CENTER <b>119.1 339.8</b>	CTAF <b>122.8</b>
-----------------------	--	----------------------



ELEV 128	TDZE 128
----------	----------



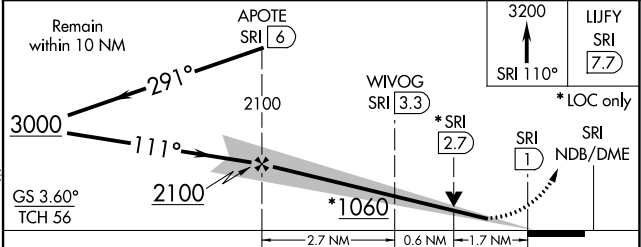
REIL Rwy 29 **1**

HIRL Rwy 11-29 **1**

FAF to MAP 5 NM

Knots	60	90	120	150	180
Min:Sec	5:00	3:20	2:30	2:00	1:40

## ADF and DME REQUIRED



CATEGORY	A	B	C	D
S-ILS 11	428-1 300 (300-1)			NA
S-LOC 11	840-1	712 (800-1)	840-1¾ 712 (800-1¾)	NA
<input checked="" type="checkbox"/> CIRCLING	840-1 712 (800-1)	980-1¼ 852 (900-1¼)	980-2½ 852 (900-2½)	NA

WAAS CH <b>42741</b> W <b>11A</b>	APP CRS <b>111°</b>	Rwy Idg <b>4982</b> TDZE <b>128</b> Apt Elev <b>128</b>
---	------------------------	---

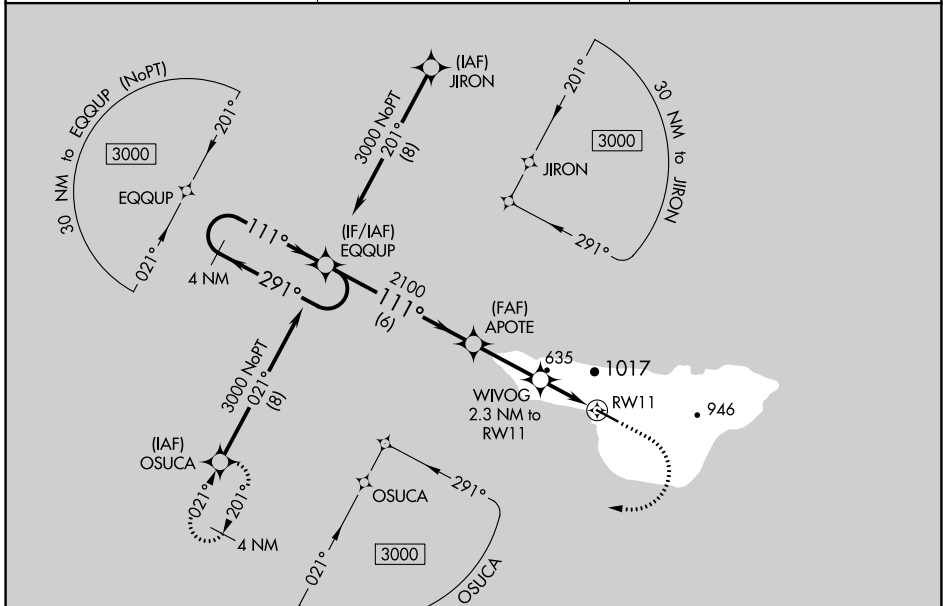
# RNAV (GPS) RWY 11

ST GEORGE (PBV) (PAPB)

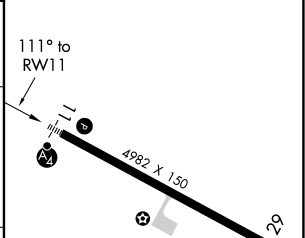
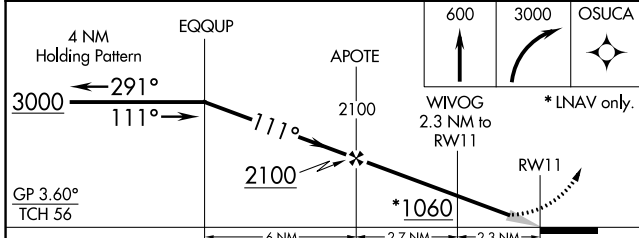
**⚠** For uncompensated Baro-VNAV systems, LNAV/VNAV NA below -14°C (7°F) or above 47°C (117°F). DME/DME RNP-0.3 NA. Circling NA north of Rwy 11-29. Inop table does not apply to LPV all Cats and LNAV Cat A. For inop ALS, increase LNAV/VNAV all Cats visibility to 2½ SM. For inop ALS, increase LNAV Cat C visibility to 2½ SM.

**MALSF**  
 MISSED APPROACH: Climb to 600 then climbing right turn to 3000 direct OSUCA and hold.

ASOS <b>135.45</b>	ANCHORAGE CENTER <b>119.1 339.8</b>	CTAF <b>122.8</b>
-----------------------	--	----------------------



ELEV 128	TDZE 128
----------	----------



CATEGORY	A	B	C	D
LPV DA	428-1	300 (300-1)		NA
LNAV/VNAV DA	957-2	829 (900-2)		NA
LNAV MDA	900-1	772 (800-1)	900-2 772 (800-2)	NA
<b>C</b> CIRCLING	900-1 772 (800-1)	980-1¼ 852 (900-1¼)	980-2½ 852 (900-2½)	NA

REIL Rwy 29 **⓪**  
HIRL Rwy 11-29 **⓪**

AK, 20 APR 2023 to 15 JUN 2023

AK, 20 APR 2023 to 15 JUN 2023

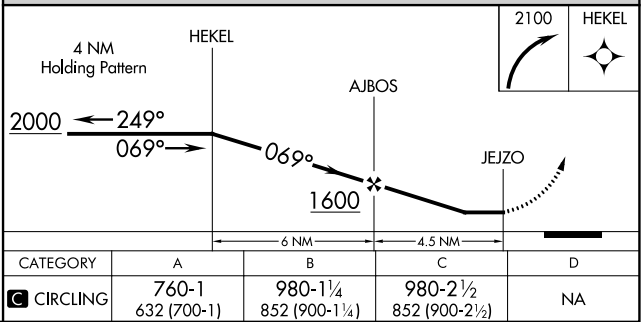
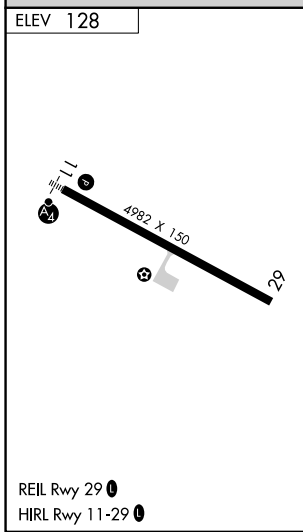
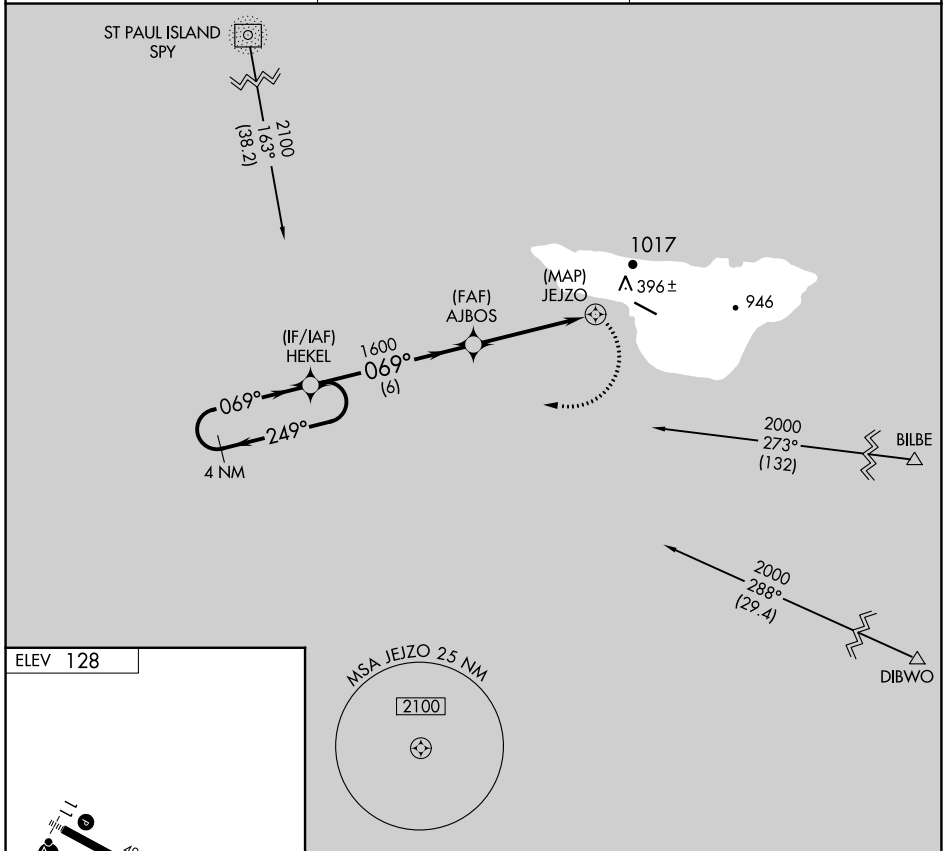
APP CRS	Rwy Idg	N/A
<b>069°</b>	TDZE	N/A
	Apt Elev	<b>128</b>

# RNAV (GPS)-D

ST GEORGE (PBV) (PAPB)

	DME/DME RNP-0.3 NA. Circling NA north of Rwy 11-29.	MISSED APPROACH: Climbing right turn to 2100 direct HEKEL and hold.
--	--	---

ASOS <b>135.45</b>	ANCHORAGE CENTER <b>119.1 339.8</b>	CTAF <b>122.8</b>
-----------------------	--	----------------------



AK, 20 APR 2023 to 15 JUN 2023

AK, 20 APR 2023 to 15 JUN 2023