

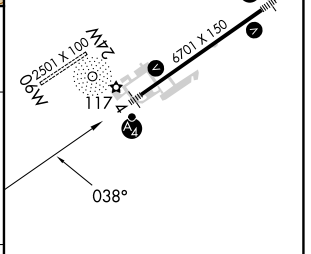
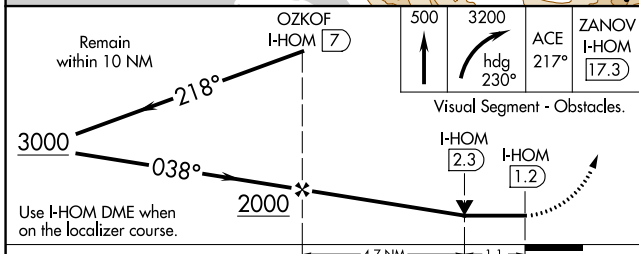
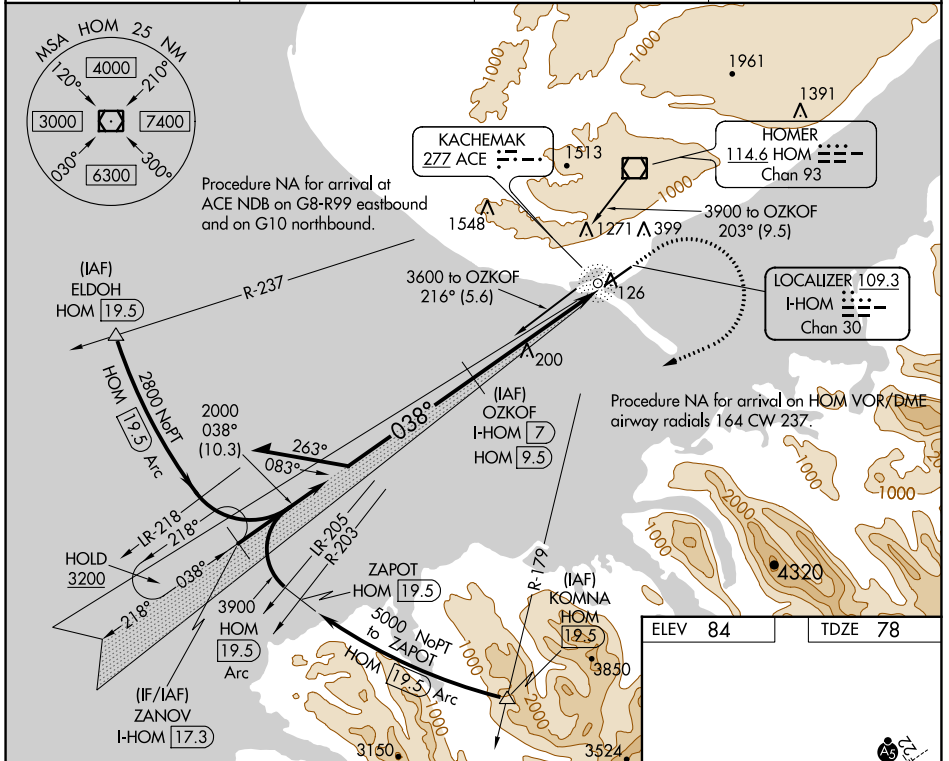
LOC/DME I-HOM 109.3 Chan 30	APP CRS 038°	Rwy Idg TDZE Apt Elev 6701 78 84
---	------------------------	--

LOC RWY 4

HOMER (HOM)(PAHO)

ADF or DME required for procedure entry. DME required.	MALSF 	MISSED APPROACH: Climb to 500 then climbing right turn to 3200 on heading 230° and on ACE NDB bearing 217° to ZANOV/I-HOM 17.3 DME and hold.
Circling NA northwest of Rwy 4-22. Inop table does not apply to Cats A and B. For inop ALS increase Cat C/D visibility to 1½ SM. Circling NA to waterways 6W and 24W.		

AFIS 135.65	ANCHORAGE CENTER 125.9 270.3	HOMER RADIO 123.6 (CTAF)	UNICOM 122.7 123.0 123.05
-----------------------	--	------------------------------------	-------------------------------------



CATEGORY	A	B	C	D
S-LOC 4	460-1 382 (400-1)			
CIRCLING	500-1 416 (500-1)	540-1 456 (500-1)	540-1½ 456 (500-1½)	760-2¼ 676 (700-2¼)

HIRL Rwy 4-22

AK, 25 JAN 2024 to 21 MAR 2024

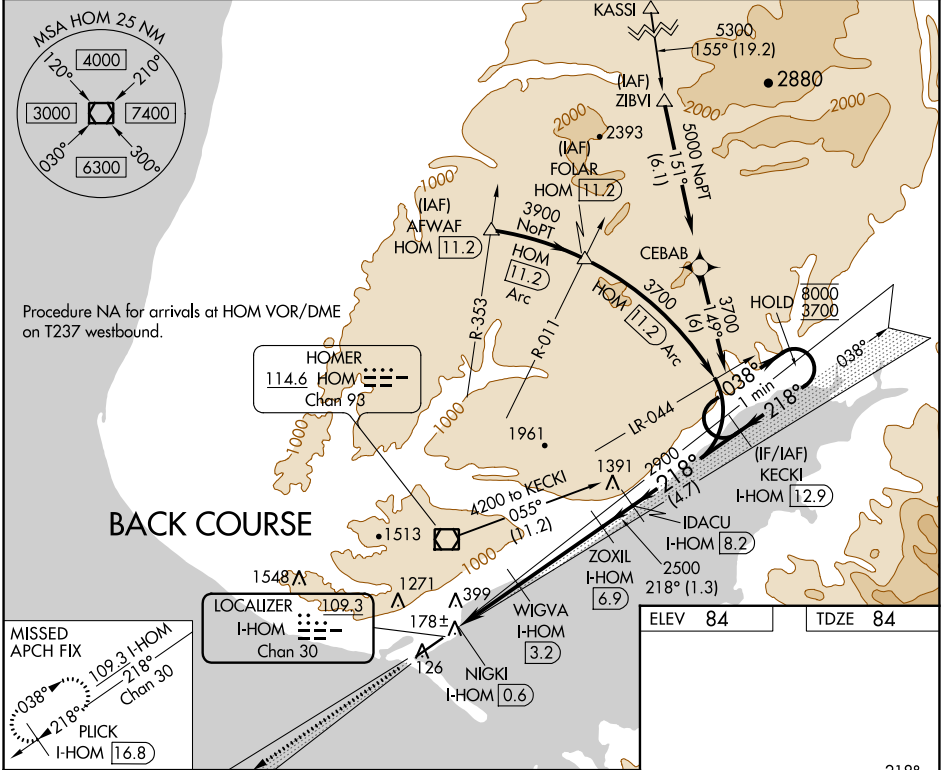
AK, 25 JAN 2024 to 21 MAR 2024

LOC/DME I-HOM 109.3 Chan 30	APP CRS 218°	Rwy Idg TDZE Apt Elev 6701 84 84
--	------------------------	--

LOC BC RWY 22 HOMER (HOM) (PAHO)

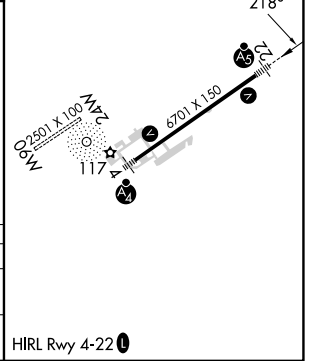
DME required. RNP APCH-GPS. From KASSI.	MALSR 	MISSED APPROACH: Climb to 2600 on I-HOM localizer SW course 218° to PLICK/16.8 DME and hold.
---	-----------	--

AFIS 135.65	ANCHORAGE CENTER 125.9 270.3	HOMER RADIO 123.6 (CTAF)	UNICOM 122.7 123.0 123.05
-----------------------	--	------------------------------------	-------------------------------------



Procedure NA for arrivals at HOM VOR/DME on T237 westbound.

MISSED APCH FIX PLICK I-HOM [16.8] I-HOM 218°	LOCALIZER I-HOM [109.3] Chan 30	HOMER I-HOM [114.6] Chan 93	WIGVA I-HOM [3.2]	NIGKI I-HOM [0.6]	ZOXIL I-HOM [6.9]	IDACU I-HOM [8.2]	KECKI I-HOM [12.9] One Minute Holding Pattern
2600 I-HOM SW crs 218°	218°	218°	218°	218°	218°	218°	218°
0.7	2.6 NM	3.7 NM	1.3 NM	4.7 NM			
CATEGORY	A	B	C	D			
S-LOC 22	500-1 416 (500-1)						
CIRCLING	500-1 416 (500-1)	540-1 456 (500-1)	540-1½ 456 (500-1½)	700-2 616 (700-2)			



AK, 25 JAN 2024 to 21 MAR 2024

AK, 25 JAN 2024 to 21 MAR 2024

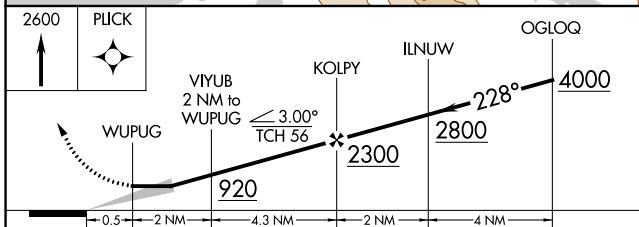
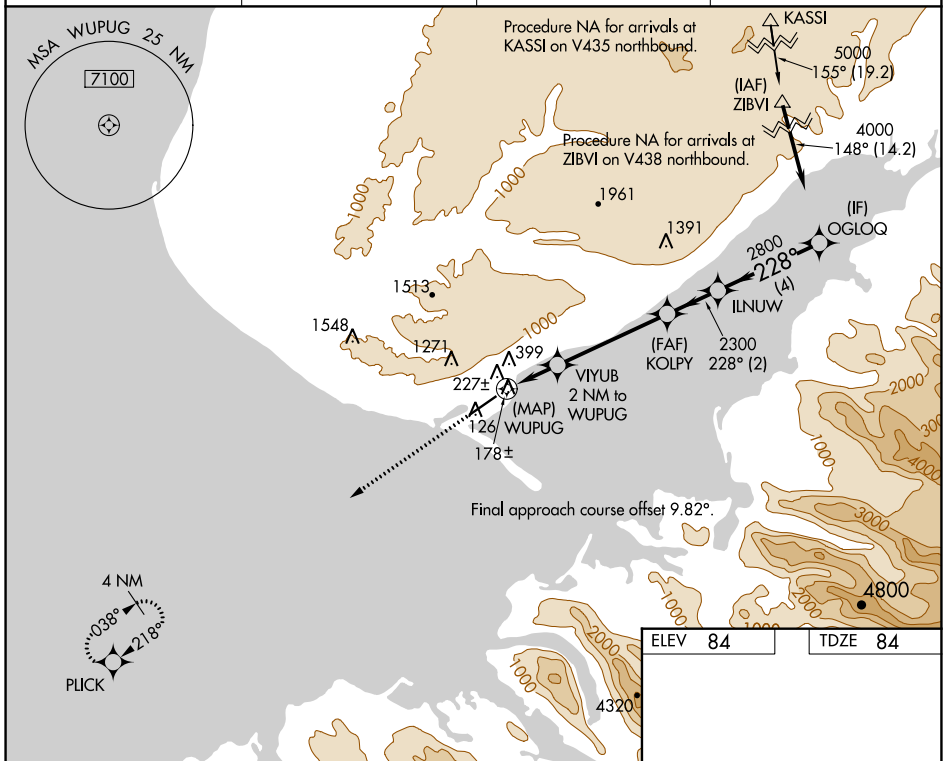
WAAS CH 72633 W22B	APP CRS 228°	Rwy Idg TDZE Apt Elev	6701 84 84
--	------------------------	-----------------------------	---------------------------------------

RNAV (GPS) Y RWY 22

HOMER (HOM) (PAHO)

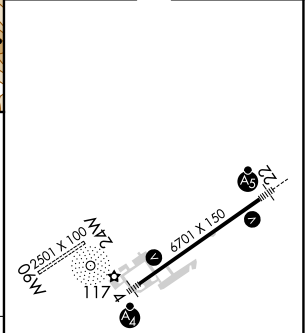
RNP APCH.	MALSR	MISSED APPROACH: Climb to 2600 direct PLUCK and hold.
<p>▼ Inop table does not apply to LP and LNAV Cat A/B. Circling NA northwest of Rwy 4-22. Circling NA to waterways 6W and 24W. For inop ALS, increase LP Cat C/D visibility to 1 1/2 SM and LNAV Cat C/D to 1 1/2 SM.</p>		

AFIS 135.65	ANCHORAGE CENTER 125.9 270.3	HOMER RADIO 123.6 (CTAF) 0	UNICOM 122.7 123.0 123.05
-----------------------	--	--------------------------------------	-------------------------------------



CATEGORY	A	B	C	D
LP MDA	500-1 416 (500-1)			
LNAV MDA	760-1	676 (700-1)	760-1 1/2	676 (700-1 1/2)
CIRCLING	760-1	676 (700-1)	760-2	760-2 1/4
			676 (700-2)	676 (700-2 1/4)

ELEV 84	TDZE 84
---------	---------



AK, 25 JAN 2024 to 21 MAR 2024

AK, 25 JAN 2024 to 21 MAR 2024

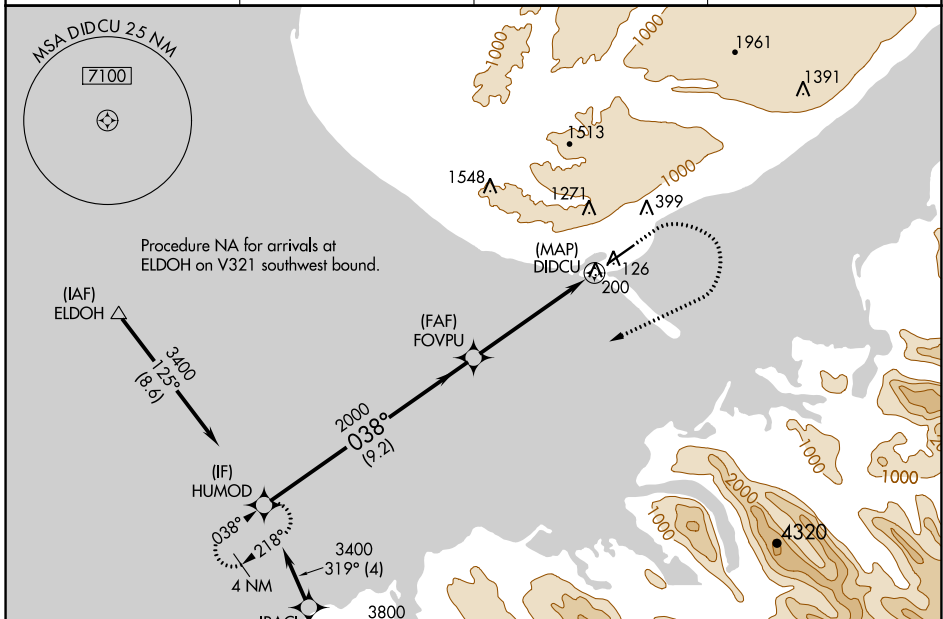
WAAS CH 86933 W04B	APP CRS 038°	Rwy Idg TDZE Apt Elev	6701 78 84
--	------------------------	-----------------------------	---------------------------------------

RNAV (GPS) Y RWY 4

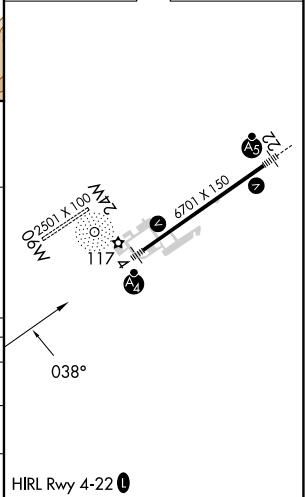
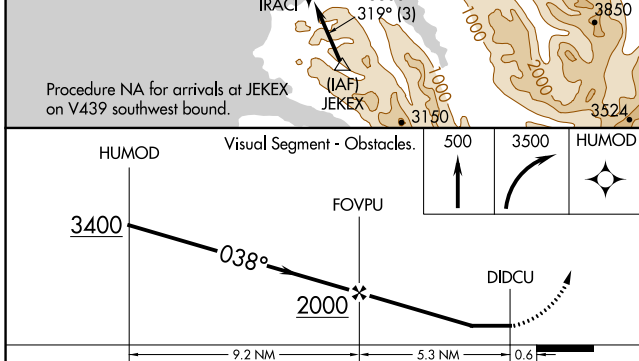
HOMER (HOM) (PAHO)

RNP APCH.	MALSF 	MISSED APPROACH: Climb to 500 then climbing right turn to 3500 direct HUMOD and hold.
<p> Circling NA northwest of Rwy 4-22. Inop table does not apply to LP and LNAV Cats A/B. Circling NA to waterways 6W and 24W. For inop ALS, increase LP Cat C/D visibility to 1 1/8 SM.</p>		

AFIS 135.65	ANCHORAGE CENTER 125.9 270.3	HOMER RADIO 123.6 (CTAF)	UNICOM 122.7 123.0 123.05
-----------------------	--	------------------------------------	-------------------------------------



ELEV 84	TDZE 78
---------	---------



CATEGORY	A	B	C	D
LP MDA	460-1 382 (400-1)			
LNAV MDA	760-1	682 (700-1)	760-1 3/4	682 (700-1 3/4)
CIRCLING	760-1	676 (700-1)	760-2	760-2 1/4
			676 (700-2)	676 (700-2 1/4)

AK, 25 JAN 2024 to 21 MAR 2024

AK, 25 JAN 2024 to 21 MAR 2024

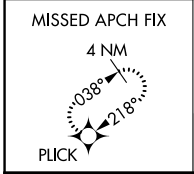
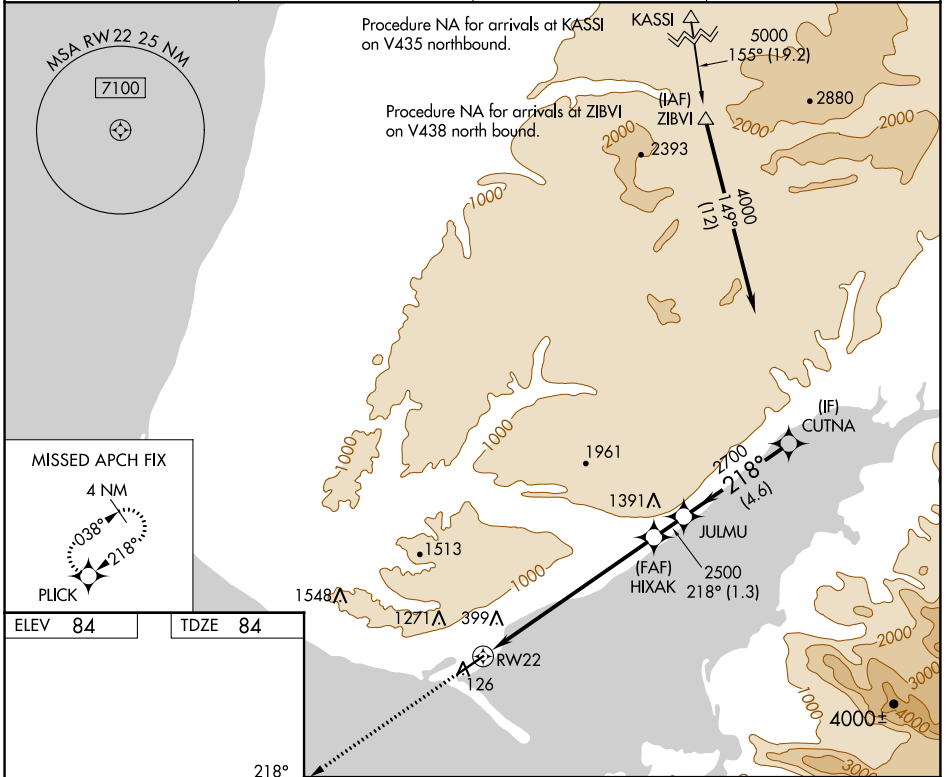
WAAS CH 82402 W22A	APP CRS 218°	Rwy Idg TDZE Apt Elev	6701 84 84
--	------------------------	-----------------------------	---------------------------------------

RNAV (GPS) Z RWY 22

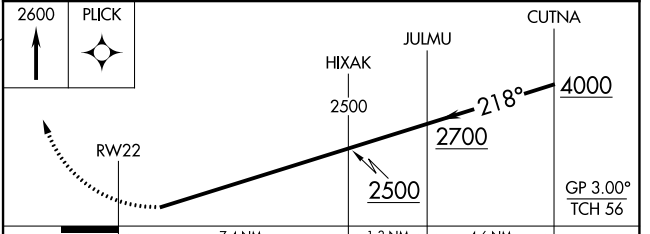
HOMER (HOM) (PAHO)

RNP APCH. ▼ Helicopter visibility reduction below 3/4 SM NA. Inop table does not apply to LPV minimums. Baro-VNAV NA. When local altimeter setting not received, procedure NA. For inop ALS increase LNAV/VNAV all Cats visibility to 1 1/2 SM.	MALSR 	MISSED APPROACH: Climb to 2600 direct PLICK and hold.
--	-----------	---

AFIS 135.65	ANCHORAGE CENTER 125.9 270.3	HOMER RADIO 123.6 (CTAF) 0	UNICOM 122.7 123.0 123.05
-----------------------	--	--------------------------------------	-------------------------------------



ELEV 84	TDZE 84
----------------	----------------



CATEGORY	A	B	C	D
LPV DA		386-1	302 (400-1)	
LNAV/VNAV DA		731-1 5/8	647 (700-1%)	

AK, 25 JAN 2024 to 21 MAR 2024

AK, 25 JAN 2024 to 21 MAR 2024

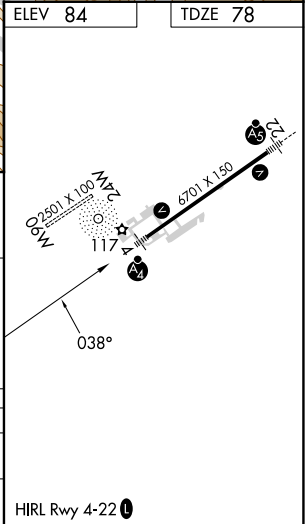
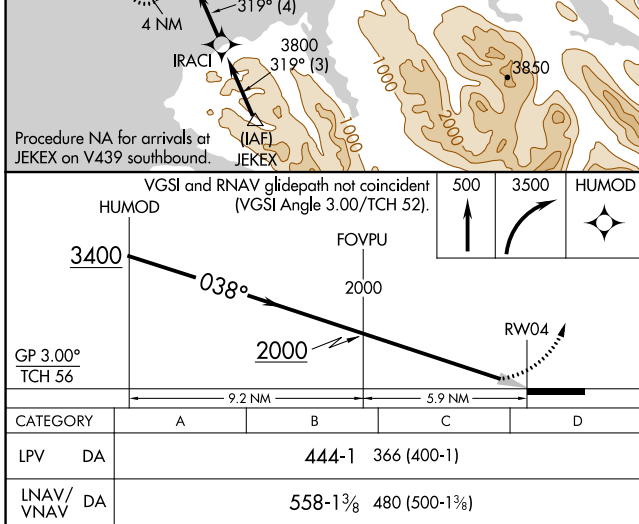
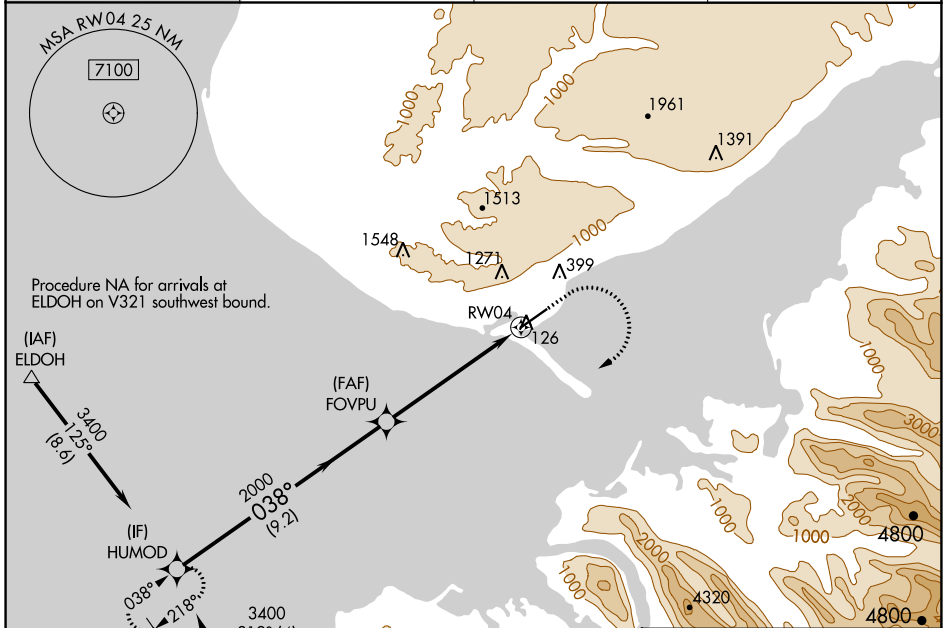
WAAS CH 86302 W04A	APP CRS 038°	Rwy Idg TDZE 78 Apt Elev 84	6701
--	------------------------	---	-------------

RNAV (GPS) Z RWY 4

HOMER (HOM) (PAHO)

RNP APCH.	MALSF	MISSED APPROACH: Climb to 500 then climbing right turn to 3500 direct HUMOD and hold.
<p>▼ For uncompensated Baro-VNAV systems, LNAV/VNAV NA below -21°C or above 54°C. Inop table does not apply to LPV all Cats.</p>		

AFIS 135.65	ANCHORAGE CENTER 125.9 270.3	HOMER RADIO 123.6 (CTAF)	UNICOM 122.7 123.0 123.05
-----------------------	--	------------------------------------	-------------------------------------



AK, 25 JAN 2024 to 21 MAR 2024

AK, 25 JAN 2024 to 21 MAR 2024