

APP CRS 101°	Rwy Idg 3001
	TDZE 14
	Apt Elev 14

RNAV (GPS) RWY 10

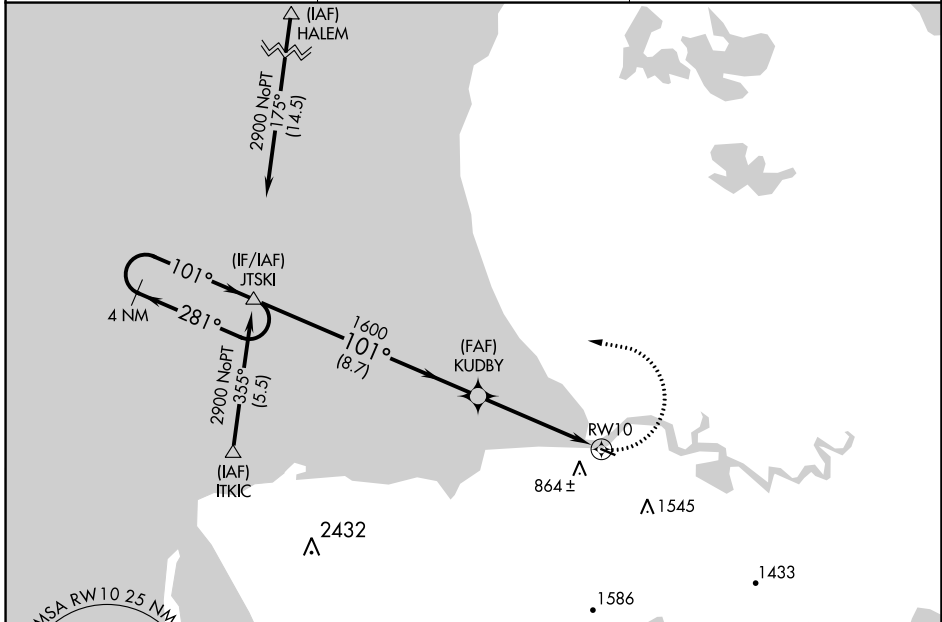
SCAMMON BAY (SCM) (PACM)

⚠ Circling NA south of Rwy 10-28. DME/DME RNP-0.3 NA. Visibility reduction by helicopters NA. VDP NA when using Hooper Bay altimeter setting. When local altimeter setting not received, use Hooper Bay altimeter setting and increase all MDA 360 feet.

❄ -21°C

MISSED APPROACH: Climbing left turn to 2900 direct JTSKI and hold.

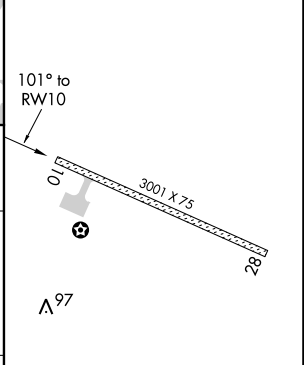
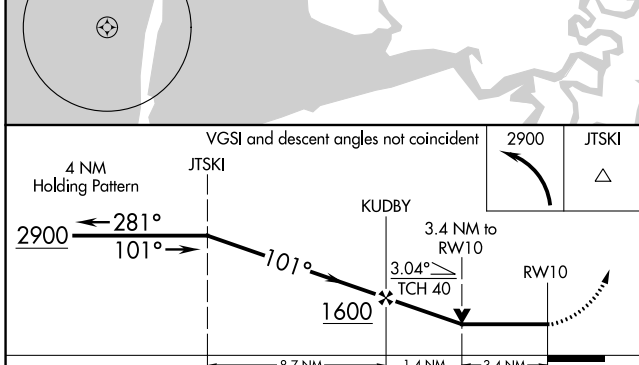
AWOS-3P 118.425	ANCHORAGE CENTER 124.5	UNICOM 123.0 (CTAF) 0
---------------------------	----------------------------------	---------------------------------



AK, 25 JAN 2024 to 21 MAR 2024

AK, 25 JAN 2024 to 21 MAR 2024

ELEV 14	TDZE 14
---------	---------



CATEGORY	A	B	C	D
LNVA MDA	1100-1¼ 1086 (1100-1¼)	1100-1½ 1086 (1100-1½)	NA	
CIRCLING	1100-1¼ 1086 (1100-1¼)	1100-1½ 1086 (1100-1½)	NA	

MIRL Rwy 10-28 0

WAAS CH 42529 W28A	APP CRS 267°	Rwy ldg 3001 TDZE 14 Apt Elev 14
--	------------------------	---

RNAV (GPS) RWY 28

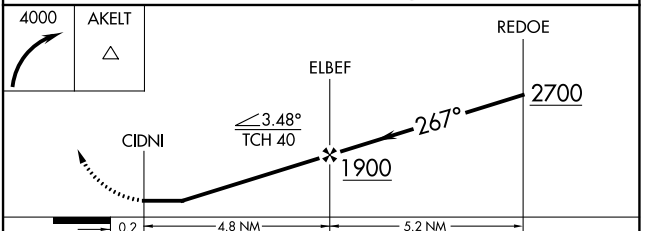
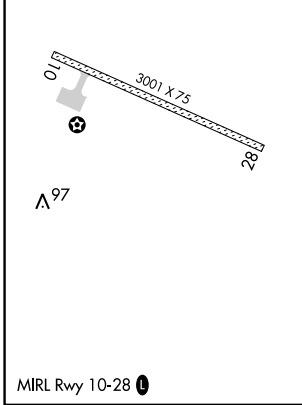
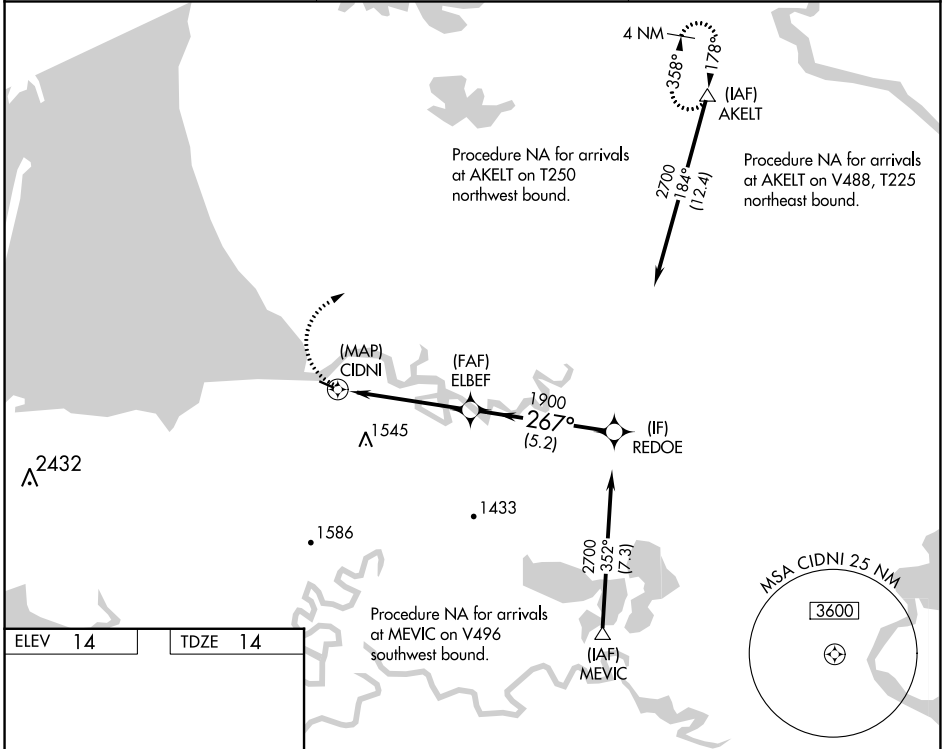
SCAMMON BAY (SCM) (PACM)

⚠ When local altimeter setting not received, use Hooper Bay altimeter setting and increase all MDA 360 feet increase LP Cat B visibility ¼ mile. Circling NA south of Rwy 10-28. DME/DME RNP-0.3 NA. Procedure NA at night. Helicopter visibility reduction below 1 SM NA.

❄ -21°C

MISSED APPROACH: Climbing right turn to 4000 direct AKELT and hold.

AWOS-3P 118.425	ANCHORAGE CENTER 124.5	UNICOM 123.0 (CTAF) 0
---------------------------	----------------------------------	---------------------------------



CATEGORY	A	B	C	D
LP MDA	900-1¼	886 (900-1¼)	NA	
LNAV MDA	1060-1¼ 1046 (1100-1¼)	1060-1½ 1046 (1100-1½)	NA	
CIRCLING	1060-1¼ 1046 (1100-1¼)	1060-1½ 1046 (1100-1½)	NA	

AK, 25 JAN 2024 to 21 MAR 2024

AK, 25 JAN 2024 to 21 MAR 2024

APP CRS 138°	Rwy Idg TDZE Apt Elev	N/A N/A 22
------------------------	-----------------------------	---------------------------------------

RNAV (GPS)-B

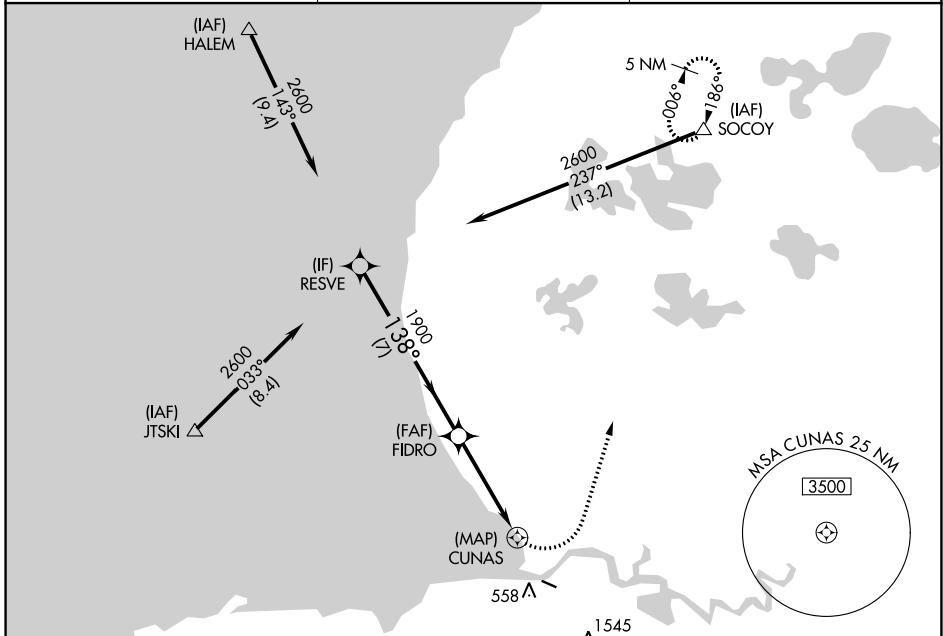
SCAMMON BAY (SCM) (PACM)

⚠ DME/DME RNP-0.3 NA. When local altimeter setting not received, use Hooper Bay altimeter setting and increase all MDA 360 feet. Circling NA south of Rwy 10-28.

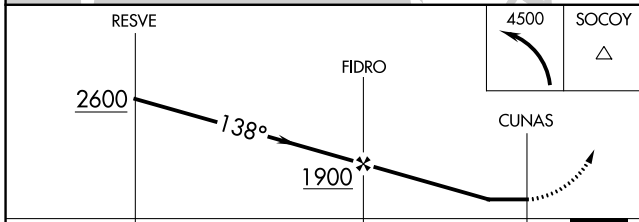
⚠ -21°C

MISSED APPROACH: Climbing left turn to 4500 direct SOCOY and hold, continue climb-in-hold to 4500.

AWOS-3P 118.425	ANCHORAGE CENTER 124.5	UNICOM 123.0 (CTAF) 0
---------------------------	----------------------------------	---------------------------------



ELEV	22
------	-----------



CATEGORY	A	B	C	D
CIRCLING	760-2¼ 738 (800-2¼)	1000-2¼ 978 (1000-2¼)	NA	

MIRL Rwy 10-28 0

AK, 25 JAN 2024 to 21 MAR 2024

AK, 25 JAN 2024 to 21 MAR 2024