

WAAS CH <b>83489</b> <b>W35A</b>	APP CRS <b>347°</b>	Rwy Idg TDZE Apt Elev	<b>4068</b> <b>1178</b> <b>1179</b>
--	------------------------	-----------------------------	---

# RNAV (GPS) RWY 35

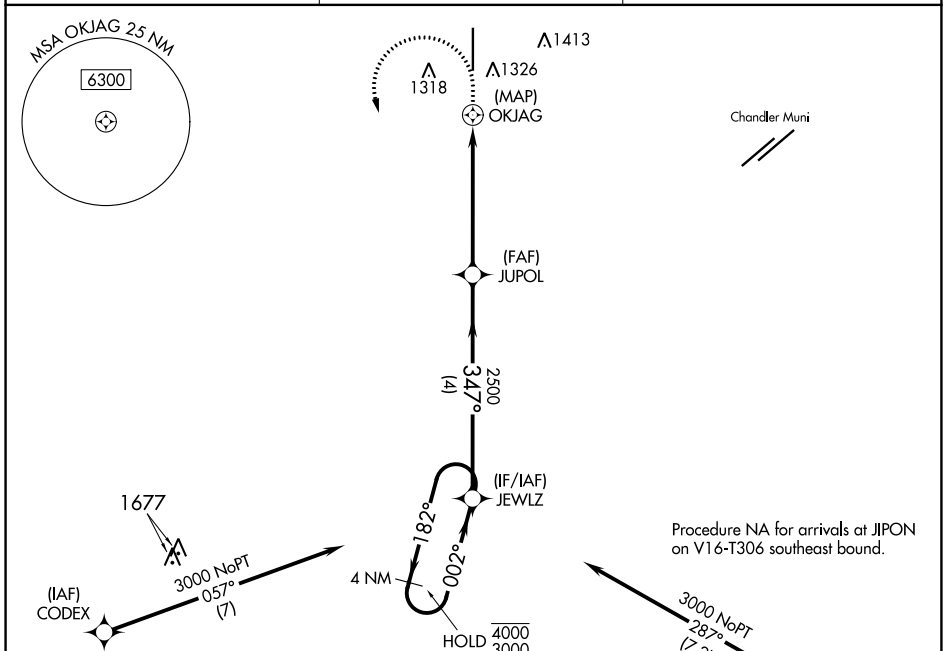
STELLAR AIRPARK (P19)

RNP APCH - GPS.

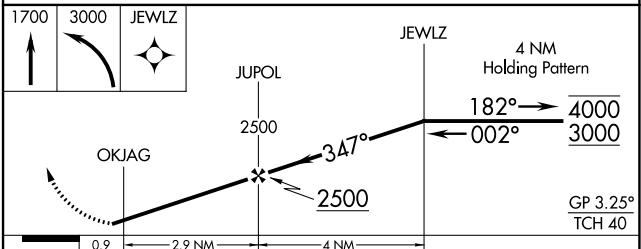
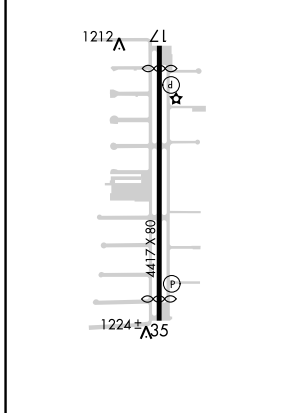
▼ Use Phoenix Sky Harbor Intl altimeter setting. Rwy 35 helicopter visibility reduction below 1 SM NA. Activate MRL Rwy 17-35 and PAPI Rwy 17-35 - CTAf. RADAR required.

▲ MISSED APPROACH: (Do not exceed 200K until JEWLZ) Climb to 1700 then climbing left turn to 3000 direct JEWLZ and hold.

PHX ASOS <b>127.575</b>	PHOENIX APP CON <b>123.7 363.0</b>	UNICOM <b>122.975 (CTAF) 0</b>
----------------------------	---------------------------------------	-----------------------------------



ELEV 1179	D	TDZE 1178
MRL Rwy 17-35		
REIL Rwy 17 and 35		



CATEGORY	A	B	C	D
LPV DA	1457-1 279 (300-1)			NA
LNAV MDA	1620-1	442 (500-1)	1620-1 3/8 442 (500-1 3/8)	NA
CIRCLING	1760-1	581 (600-1)	1760-1 1/2 581 (600-1 1/2)	NA

SW-4, 22 FEB 2024 to 21 MAR 2024

SW-4, 22 FEB 2024 to 21 MAR 2024