

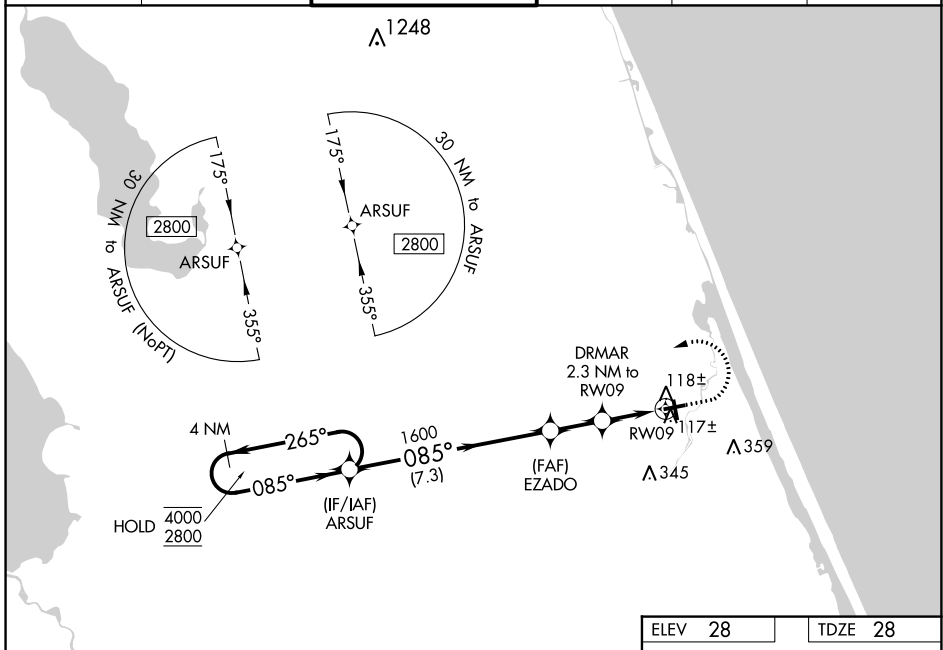
WAAS CH <b>82334</b> <b>W09A</b>	APP CRS <b>085°</b>	Rwy Idg TDZE <b>28</b> Apt Elev <b>28</b>	<b>4005</b>
--	------------------------	---	-------------

# RNAV (GPS) RWY 9

ORMOND BEACH MUNI (OMN)

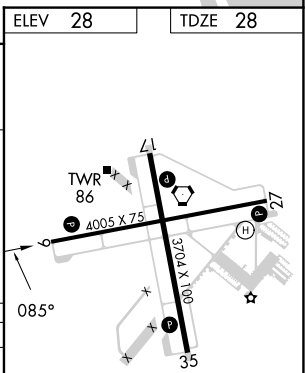
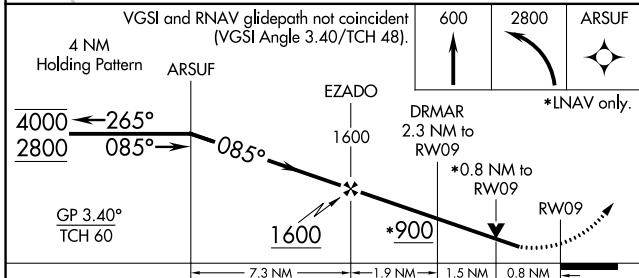
RNP APCH.	MISSED APPROACH: Climb to 600 then climbing left turn to 2800 direct ARSUF and hold.
<p>▼ Rwy 9 helicopter visibility reduction below 3/4 SM NA. For uncompensated Baro-VNAV systems, LNAV/VNAV NA below -15° C or above 54° C. VDP NA when using Daytona Beach altimeter setting.</p>	

ATIS <b>118.475</b>	DAYTONA APP CON <b>125.8 269.075</b>	ORMOND BEACH TOWER* <b>119.075 (CTAF)</b>	GND CON <b>121.625</b>	CLNC DEL <b>121.625</b>	UNICOM <b>123.05</b>
------------------------	---	--	---------------------------	----------------------------	-------------------------



SE-3, 22 FEB 2024 to 21 MAR 2024

SE-3, 22 FEB 2024 to 21 MAR 2024



CATEGORY	A	B	C	D
LPV DA	313-1 285 (300-1)			NA
LNAV/VNAV DA	278-1 250 (300-1)			NA
LNAV MDA	380-1 352 (400-1)			NA
CIRCLING	500-1 472 (500-1)		740-2 712 (800-2)	NA