

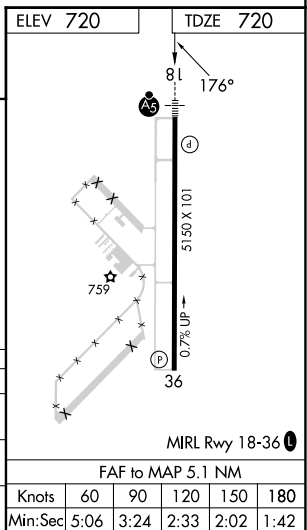
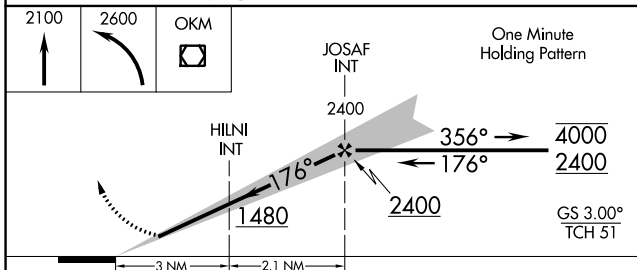
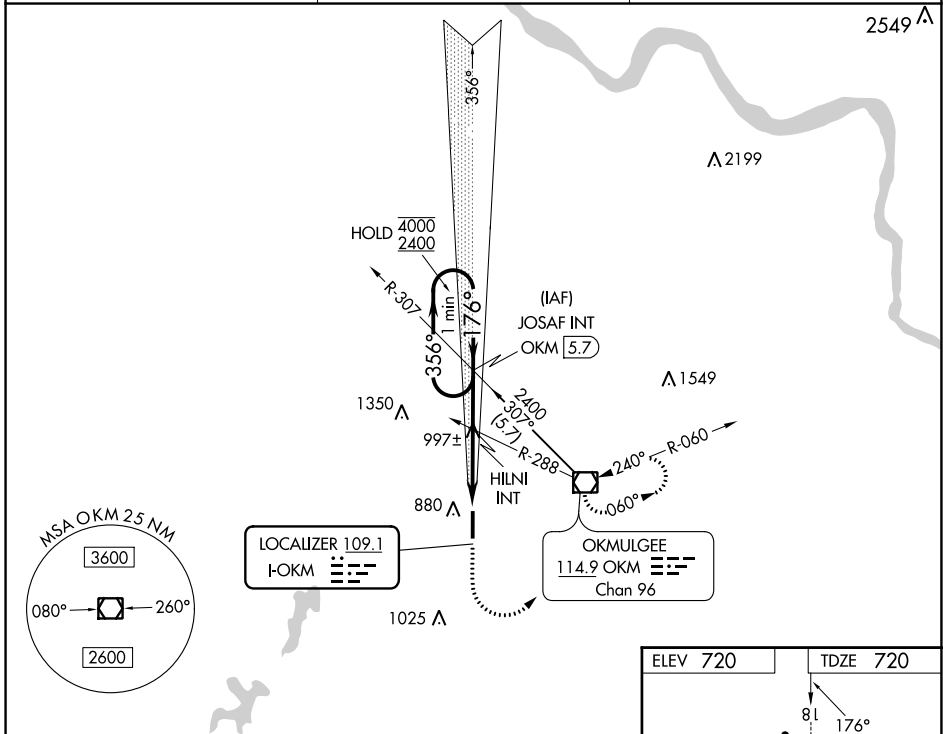
LOC I-OKM 109.1	APP CRS 176°	Rwy Idg 5150
		TDZE 720
		Apt Elev 720

ILS or LOC RWY 18

OKMULGEE RGNL/PAUL AND BETTY ABBOTT FLD (OKM)

<p>▼ For inop ALS, increase S-ILS all Cats visibility to 3/4 SM, increase S-LOC Cats A and B visibility to 1 SM, and S-LOC Cat C visibility to 1 1/2 SM.</p> <p>▲ NA</p>	<p>MALSR</p>	<p>MISSED APPROACH: Climb to 2100 then climbing left turn to 2600 direct OKM VOR/DME and hold, continue climb-in-hold to 2600.</p>
--	--------------	--

AWOS-3PT 118.225	TULSA APP CON 119.85 338.3	UNICOM 123.0 (CTAF) 0
----------------------------	--------------------------------------	---------------------------------



CATEGORY	A	B	C	D
S-ILS 18	920-1/2	200 (200-1/2)		NA
S-LOC 18	1260-1/2	540 (600-1/2)	1260-1 540 (600-1)	NA
C CIRCLING	1320-1 600 (600-1)	1340-1 620 (700-1)	1340-1 3/4 620 (700-1 3/4)	NA

Knots	60	90	120	150	180
Min:Sec	5:06	3:24	2:33	2:02	1:42

SC-1, 22 FEB 2024 to 21 MAR 2024

SC-1, 22 FEB 2024 to 21 MAR 2024