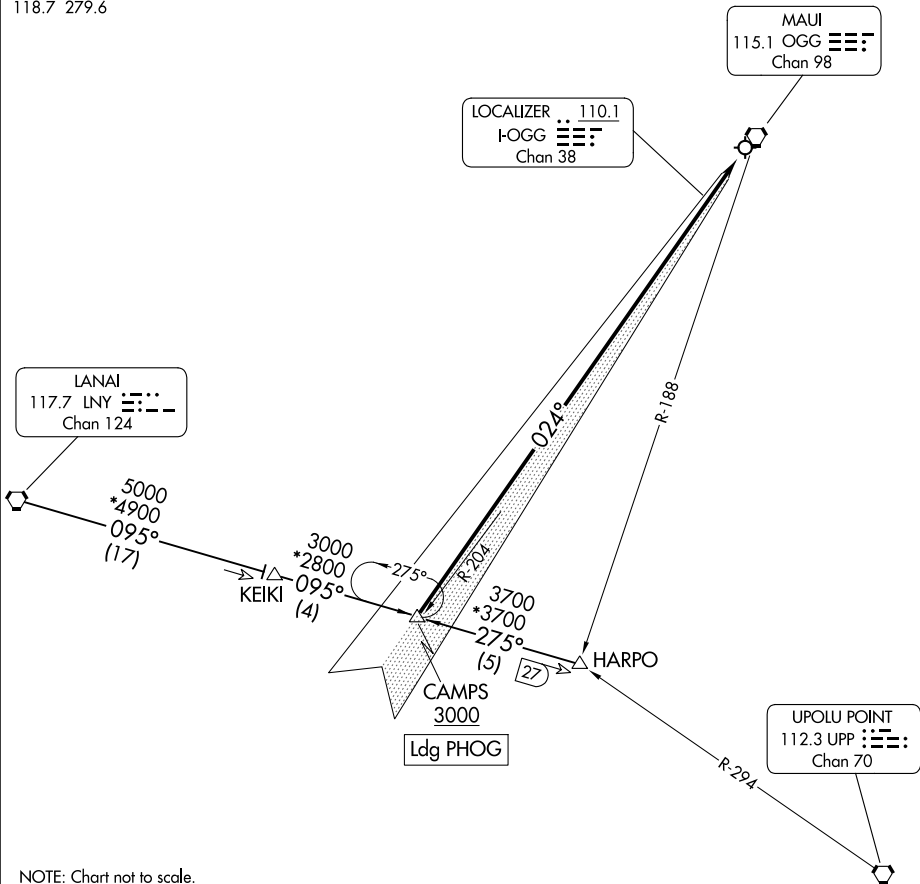


HCF CENTER
119.5 225.4
ATIS
128.6
MAUI TOWER*
118.7 279.6

RADAR required to HARPO.
DME required for LANAI Transition.



PAC, 25 JAN 2024 to 21 MAR 2024

PAC, 25 JAN 2024 to 21 MAR 2024

ARRIVAL ROUTE DESCRIPTION

HARPO TRANSITION (HARPO.CAMPS4): From over HARPO on LNY R-095 to CAMPS.
Thence

LANAI TRANSITION (LNY.CAMPS4): From over LNY VORTAC on LNY R-095 to CAMPS.
Thence

. . . . cross CAMPS at or above 3000, then on I-OGG localizer course. Expect
ILS Y or LOC Y RWY 2 approach.