

WAAS CH 82325 W25A	APP CRS 252°	Rwy Idg TDZE Apt Elev	4199 23 23
--	------------------------	-----------------------------	---------------------------------------

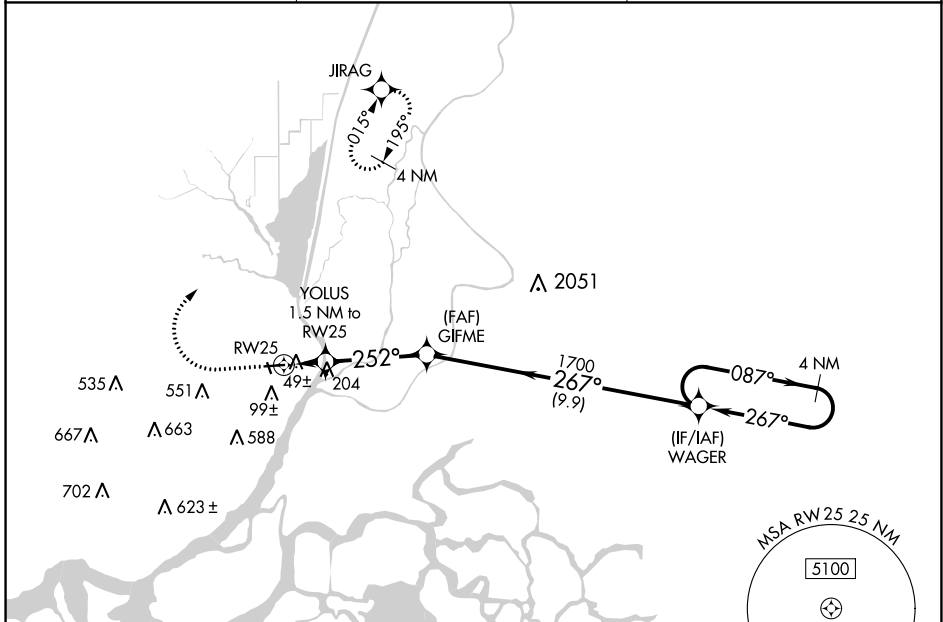
RNAV (GPS) RWY 25

RIO VISTA MUNI (O88)

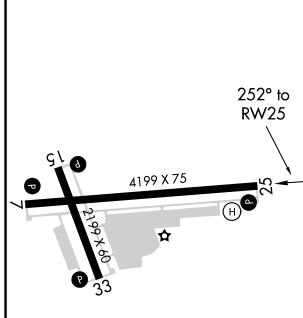
⚠ NA Circling Rwy 33 NA at night. DME/DME RNP-0.3 NA. VDP NA when using Concord altimeter setting. When local altimeter setting not received, use Concord altimeter setting and increase all MDA 60 feet and increase LP and LNAV Cat C visibility 1/8 mile and Circling Cat C visibility 1/4 mile.

MISSED APPROACH: Climb to 500 then climbing right turn to 3100 direct JIRAG and hold, continue climb-in-hold to 3100.

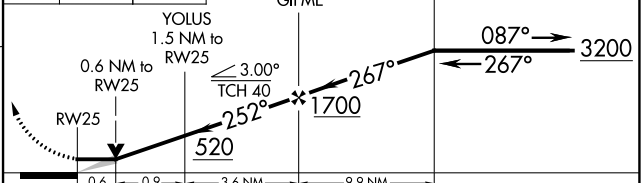
AWOS-AV 127.075	TRAVIS APP CON 119.9 322.325	UNICOM 122.725 (CTAF) 0
---------------------------	--	-----------------------------------



ELEV 23	TDZE 23
---------	---------



500 3100 JIRAG VGSi and descent angles not coincident (VGSi Angle 4.00/TCH 40). 4 NM Holding Pattern



CATEGORY	A	B	C	D
LP MDA	300-1	277 (300-1)	300-7/8 277 (300-7/8)	NA
LNAV MDA	460-1	437 (500-1)	460-1 1/4 437 (500-1 1/4)	NA
CIRCLING	520-1 497 (500-1)	560-1 537 (600-1)	580-1 1/2 557 (600-1 1/2)	NA

REIL Rwy 25 0
MIRL Rwy 7-25 and 15-33 0

SW-2, 07 OCT 2021 to 04 NOV 2021

SW-2, 07 OCT 2021 to 04 NOV 2021