

KEY WEST, FLORIDA

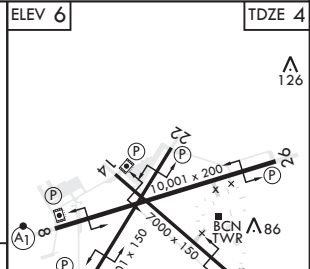
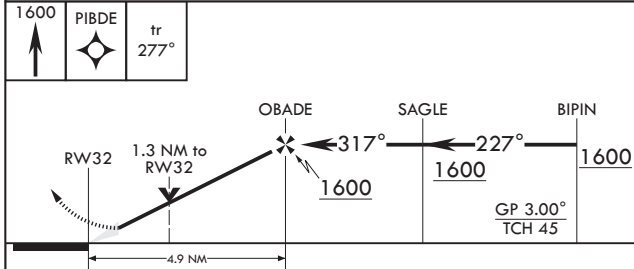
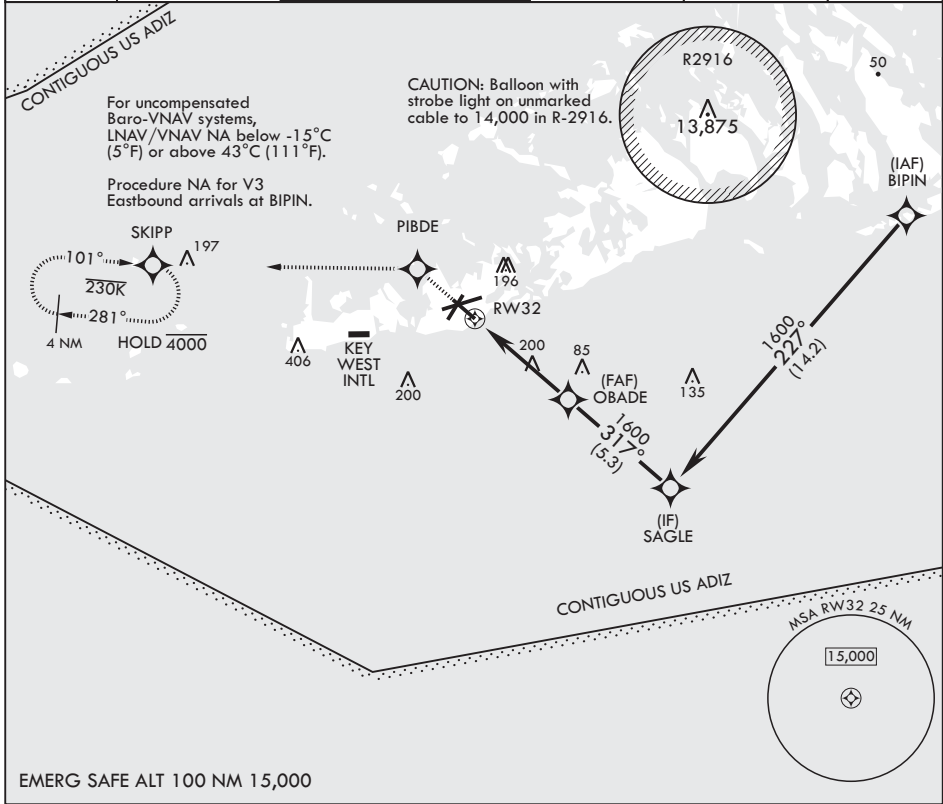
# RNAV (GPS) RWY 32

APCH CRS 317°	Rwy Idg TDZE Arprt Elev	7000 4 6
------------------	-------------------------------	----------------

AL-214 (USN) KEY WEST NAS (BOCA CHICA FLD) (KNQX)

RNP APCH  
 MISSED APPROACH: (Do not exceed 230 KIAS until PIBDE.) Climb to 1600 direct PIBDE, track 277° to SKIPP and hold, continue climb-in-hold to 1600.

ATIS* 307.025	APP CON 124.025 313.7	NAVY KEY WEST TOWER* 118.575 340.25	GND CON 121.7 336.45	CLNC DEL 121.2 357.4	ASR/PAR
------------------	--------------------------	--	-------------------------	-------------------------	---------



CATEGORY	A	B	C	D
LNAV/VNAV DA	254-¾		250	(300-¾)
LNAV MDA	460-1	456 (500-1)	460-1½	456 (500-1½)
CIRCLING	460-1 454 (500-1)	500-1 494 (500-1)	500-1½ 494 (500-1½)	560-2 554 (600-2)

HIRL all Rwys

KEY WEST, FLORIDA  
 Amdt 2 23FEB23

24°34'N - 81°41'W

KEY WEST NAS (BOCA CHICA FLD) (KNQX)

# RNAV (GPS) RWY 32

SE-3, 22 FEB 2024 to 21 MAR 2024

SE-3, 22 FEB 2024 to 21 MAR 2024