

APP CRS	Rwy Idg	3601
029°	TDZE	65
	Apt Elev	65

RNAV (GPS) RWY 3

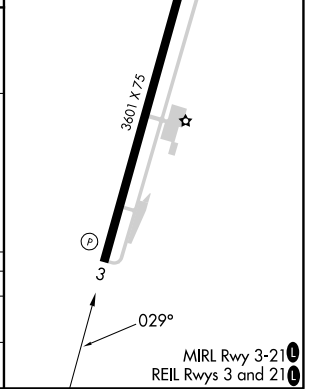
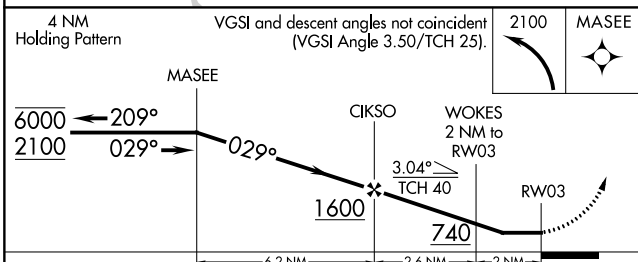
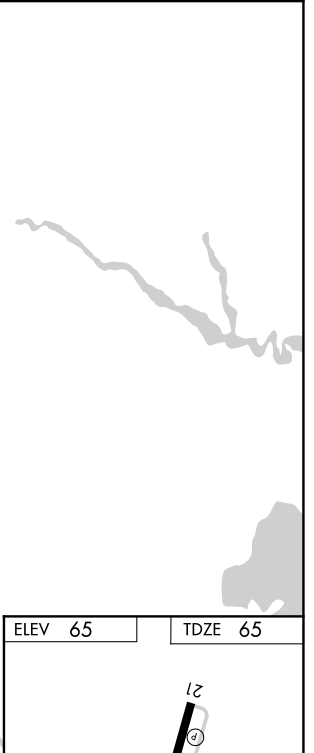
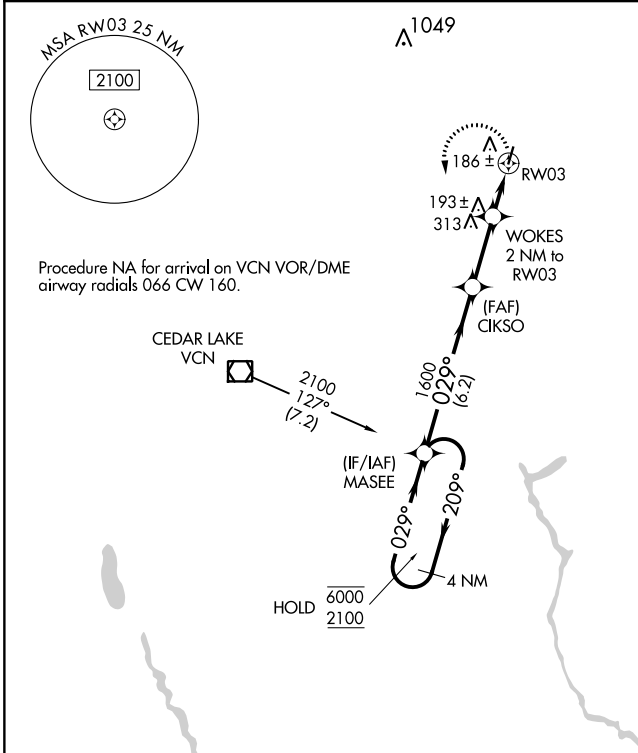
HAMMONTON MUNI (N81)

RNP APCH - GPS.

NA Procedure NA at night. Rwy 3 helicopter visibility reduction below 1 SM NA. When local altimeter setting not received, use Atlantic City altimeter setting and increase all MDA 40 feet. Increase LNAV CAT C visibility 1/8 SM.

MISSED APPROACH: Climbing left turn to 2100 direct MASEE and hold.

AWOS-AV 122.7	ACY ASOS 125.725 316.15	ATLANTIC CITY APP CON 134.25 292.2	GCO 121.725	UNICOM 122.7 (CTAF)	123.5
-------------------------	-----------------------------------	--	-----------------------	-------------------------------	--------------



CATEGORY	A	B	C	D
LNAV MDA	560-1	495 (500-1)	560-1 ³ / ₈ 495 (500-1 ³ / ₈)	NA
C CIRCLING	560-1	495 (500-1)	680-1 ³ / ₄ 615 (700-1 ³ / ₄)	NA

NE-2, 22 FEB 2024 to 21 MAR 2024

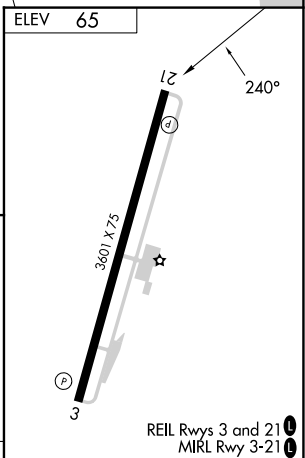
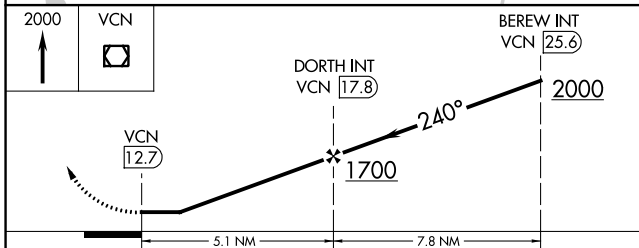
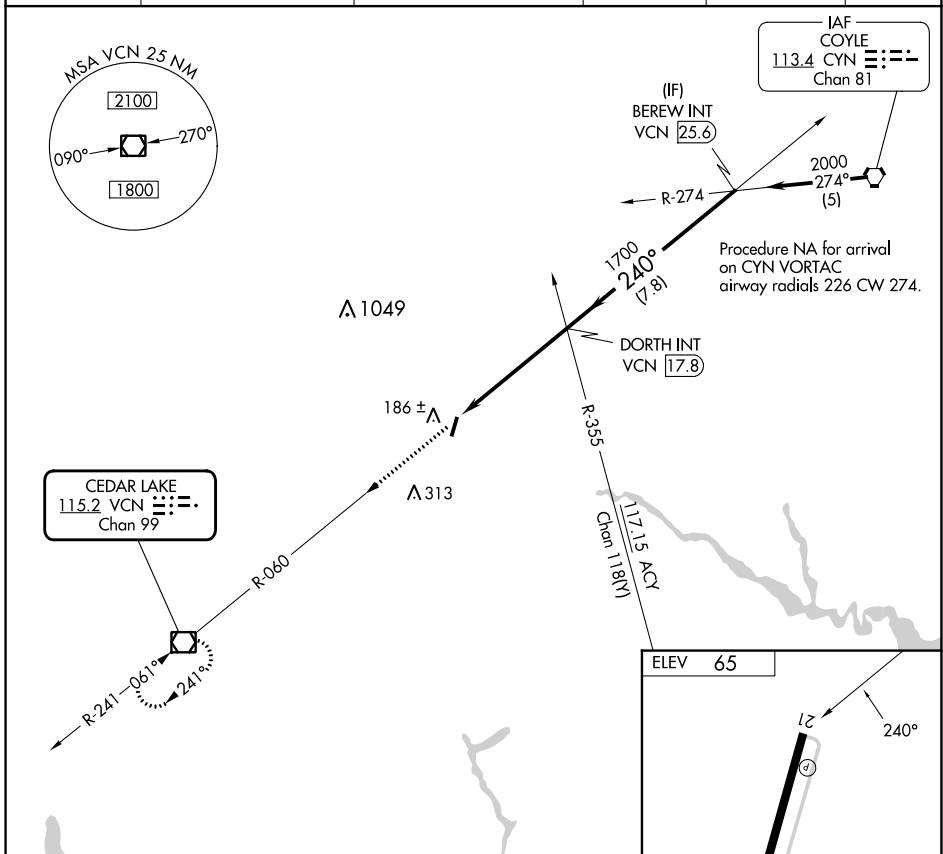
NE-2, 22 FEB 2024 to 21 MAR 2024

VOR/DME VCN 115.2 Chan 99	APP CRS 240°	Rwy Idg TDZE Apt Elev N/A N/A 65
---	------------------------	--

VOR-B
HAMMONTON MUNI (N81)

<p>▼ Procedure NA at night. When local altimeter setting not received, use Atlantic City altimeter setting and increase all MDAs 40 feet.</p> <p>▲ NA</p>	<p>MISSED APPROACH: Climb to 2000 direct VCN VOR/DME and hold.</p>
---	--

AWOS-AV 122.7	ACY ASOS 125.725 316.15	ATLANTIC CITY APP CON 134.25 292.2	GCO 121.725	UNICOM 122.7 (CTAF)	123.5 0
-------------------------	-----------------------------------	--	-----------------------	-------------------------------	----------------



CATEGORY	A	B	C	D	FAF to MAP 5.1 NM					
CIRCLING	560-1	495 (500-1)	680-1¾ 615 (700-1¾)	NA	Knots	60	90	120	150	180
					Min:Sec	5:06	3:24	2:33	2:02	1:42

NE-2, 22 FEB 2024 to 21 MAR 2024

NE-2, 22 FEB 2024 to 21 MAR 2024