

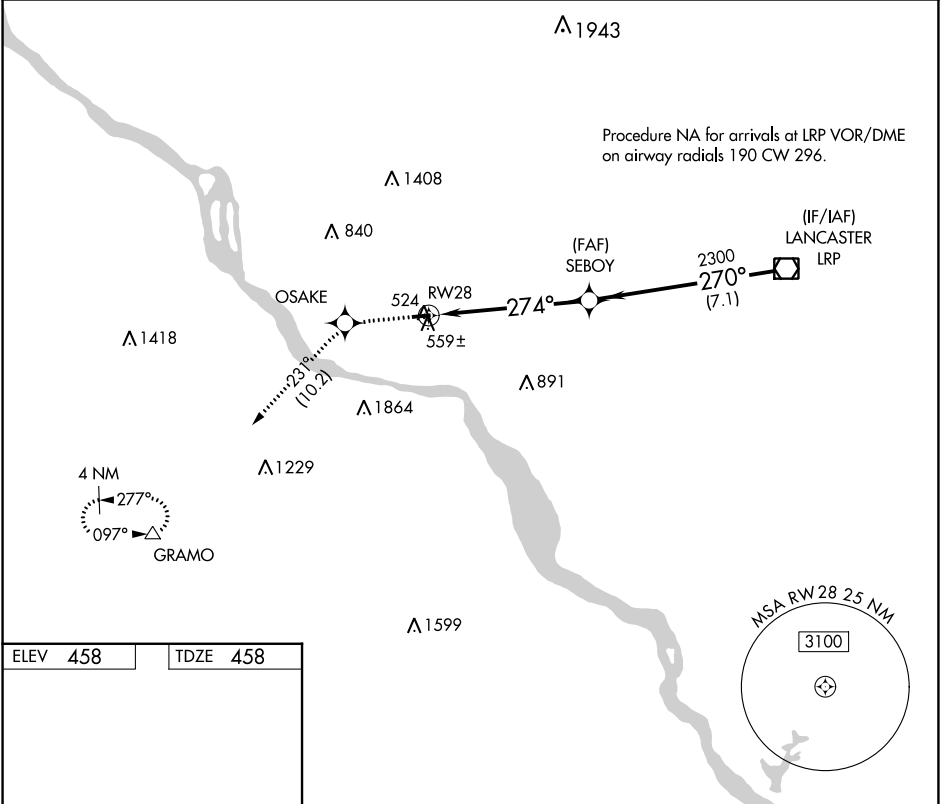
APP CRS 274°	Rwy Idg TDZE Apt Elev	3250 458 458
------------------------	-----------------------------	---

RNAV (GPS) RWY 28

DONEGAL SPRINGS AIRPARK (N71)

RNP APCH - GPS.	MISSED APPROACH: Climb to 3000 direct OSAKE and via 231° track to GRAMO and hold.
<p>Procedure NA at night. Use Harrisburg Intl altimeter setting; when not received, use Fort Indiantown Gap altimeter setting and increase all MDAs 20 feet.</p>	

MDT ASOS 118.8	HARRISBURG APP CON 126.45 281.525	HARRISBURG CLNC DEL 127.05	UNICOM 122.8 (CTAF)
--------------------------	---	--------------------------------------	-------------------------------



NE-4, 22 FEB 2024 to 21 MAR 2024

NE-4, 22 FEB 2024 to 21 MAR 2024

ELEV 458	TDZE 458

3000	OSAKE	GRAMO	LRP VOR/DME
↑	✦	fr 231°	△
5.8 NM		7.1 NM	
CATEGORY	A	B	C
LNAV MDA	1380-1¼	922 (1000-1¼)	NA
CIRCLING	1380-1¼	922 (1000-1¼)	NA

VOR/DME LRP 117.3 Chan 120	APP CRS 272°	Rwy Idg 3250 TDZE 458 Apt Elev 458
--	------------------------	---

VOR RWY 28

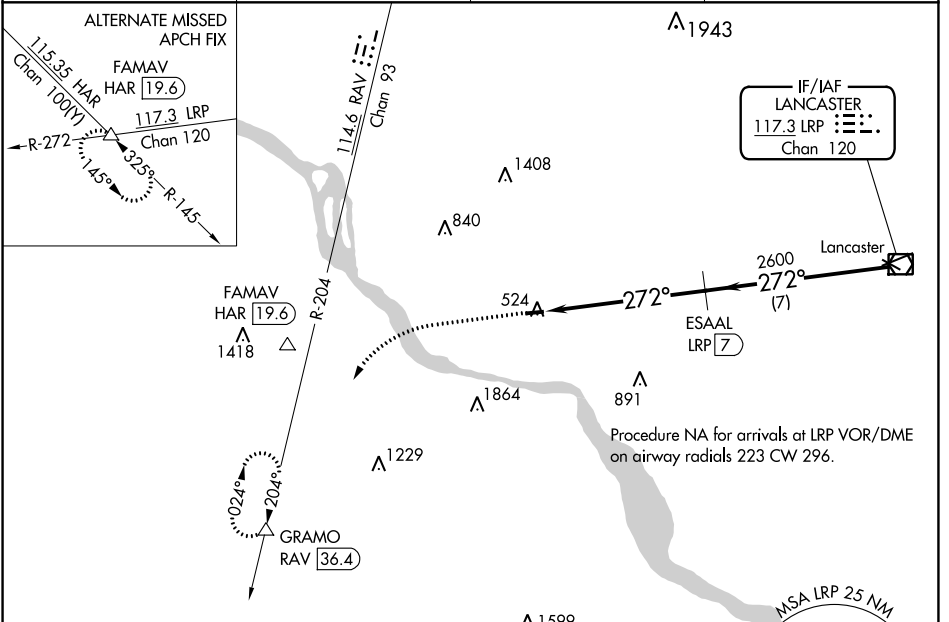
DONEGAL SPRINGS AIRPARK (N71)

DME required.

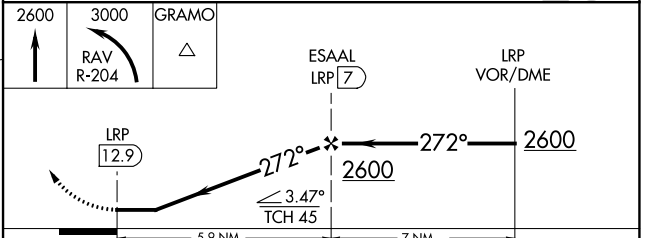
NA Use Harrisburg Intl altimeter setting; when not received, use Fort Indiantown Gap altimeter setting and increase all MDAs 20 feet. Rwy 28 helicopter visibility reduction below 1 SM NA. Procedure NA at night.

MISSED APPROACH: Climb to 2600 then climbing left turn to 3000 on RAV R-204 to GRAMO/RAV 36.4 DME and hold.

MDT ASOS 118.8	HARRISBURG APP CON 126.45 281.525	HARRISBURG CLNC DEL 127.05	UNICOM 122.8 (CTAF)
--------------------------	---	--------------------------------------	-------------------------------



ELEV 458	TDZE 458
-----------------	-----------------



CATEGORY	A	B	C	D
S-28	940-1	482 (500-1)		NA
CIRCLING	940-1 482 (500-1)	960-1 502 (600-1)		NA

NE-4, 22 FEB 2024 to 21 MAR 2024

NE-4, 22 FEB 2024 to 21 MAR 2024