

WAAS CH 70409 W24A	APP CRS 237°	Rwy Idg TDZE 1758 Apt Elev 1763
--	------------------------	---

RNAV (GPS) RWY 24

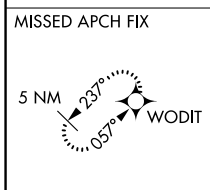
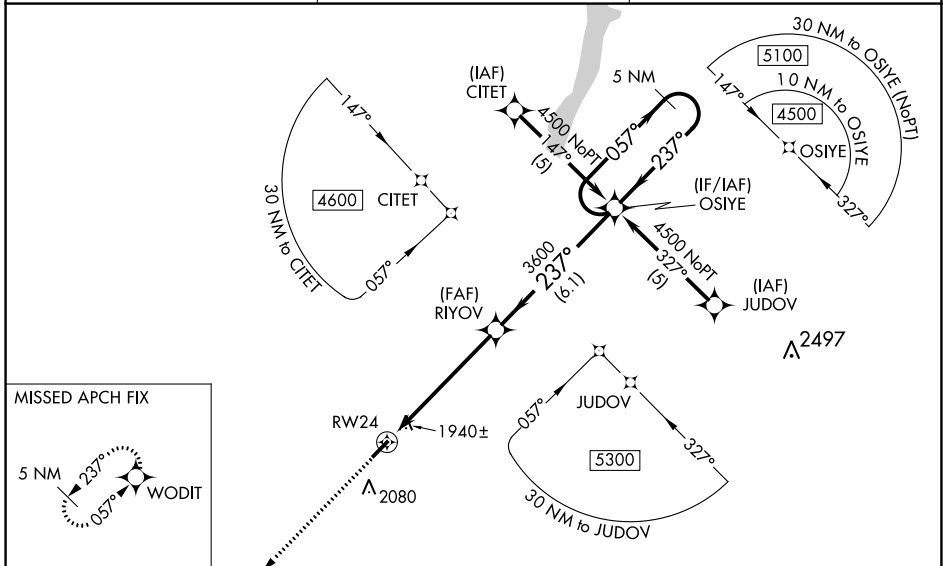
ALBERT S NADER RGNL (N66)

RNP APCH.

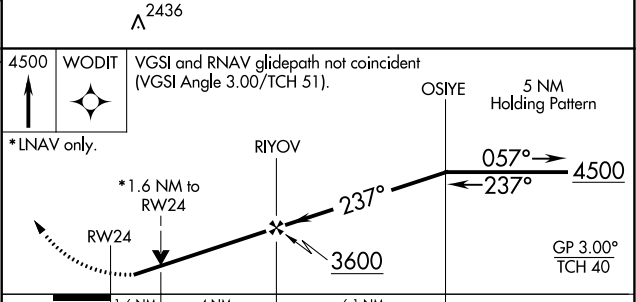
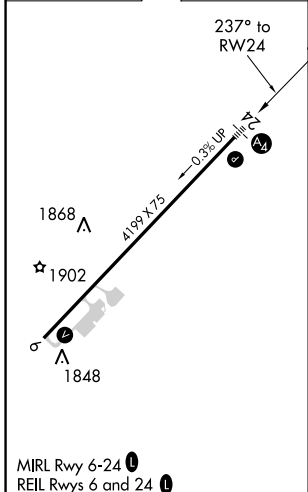
When local altimeter setting not received, use Binghamton altimeter setting and increase LPV DA to 2313 feet, LNAV/VNAV DA to 2380 feet, and all MDAs 140 feet; increase LPV and LNAV/VNAV visibilities all Cats ½ SM. Baro-VNAV NA when using Binghamton altimeter setting. For uncompensated Baro-VNAV systems, LNAV/VNAV NA below -18°C or above 54°C. Rwy 6 helicopter visibility reduction below ¾ SM NA. Inop table does not apply. VDP NA when using Binghamton altimeter setting. Circling Rwy 6 NA at night.

MALS MISSED APPROACH: Climb to 4500 direct WODIT and hold.

AWOS-3 119.575	BOSTON CENTER 133.25 279.5	UNICOM 122.8 (CTAF) 0
--------------------------	--------------------------------------	---------------------------------



ELEV 1763	TDZE 1758
-----------	-----------



CATEGORY	A	B	C	D
LPV DA	2191-1½	433 (500-1½)		NA
LNAV/VNAV DA	2258-1¾	500 (500-1¾)		NA
LNAV MDA	2300-1	542 (600-1)		NA
CIRCLING	2380-1	617 (700-1)		NA

NE-2, 06 OCT 2022 to 03 NOV 2022

NE-2, 06 OCT 2022 to 03 NOV 2022

WAAS CH 86309 W06A	APP CRS 057°	Rwy Idg TDZE Apt Elev	4199 1763 1763
--	------------------------	-----------------------------	---

RNAV (GPS) RWY 6

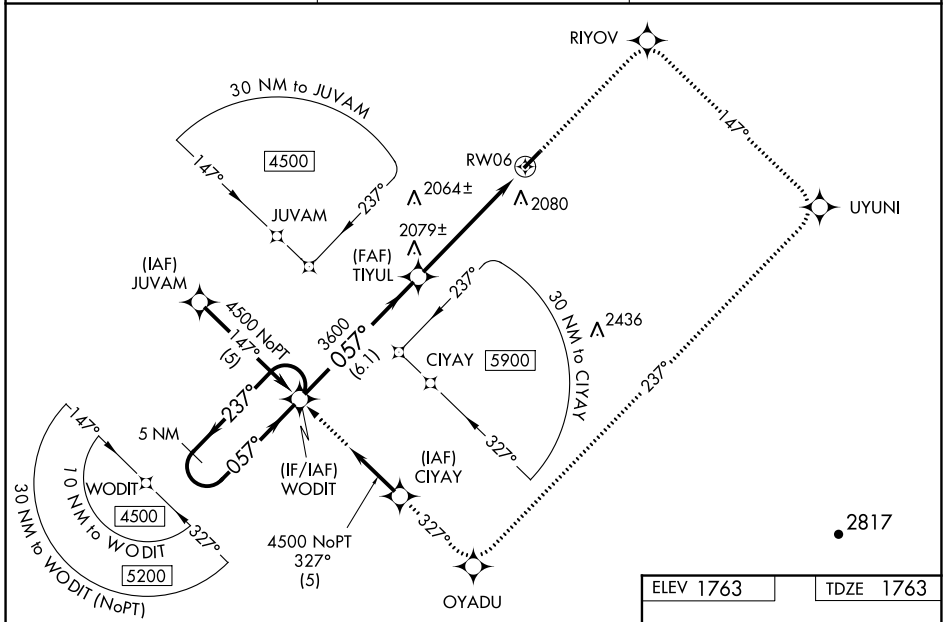
ALBERT S NADER RGNL (N66)

RNP APCH.

NA When local altimeter setting not received, use Binghamton altimeter setting: increase LPV DA to 2197 feet, LNAV/VNAV DA to 2473 feet, and all MDAs 140 feet; increase LPV and LNAV/VNAV visibilities all Cats ½ SM. Baro-VNAV NA when using Binghamton altimeter setting. For uncompensated Baro-VNAV systems, LNAV/VNAV NA below -18°C or above 54°C. Rwy 6 helicopter visibility reduction below 1 SM NA. Procedure NA at night.

MISSED APPROACH: Climb to 4500 direct RIYOV and right turn on track 147° to UYUNI and right turn on track 237° to OYADU and on track 327° to WODIT and hold.

AWOS-3 119.575	BOSTON CENTER 133.25 279.5	UNICOM 122.8 (CTAF) 0
--------------------------	--------------------------------------	---------------------------------

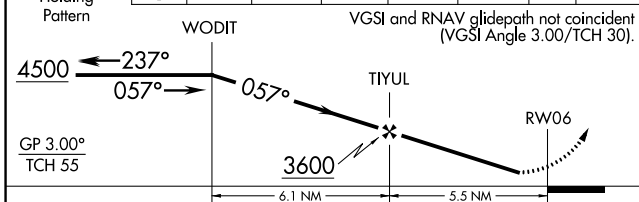


NE-2, 06 OCT 2022 to 03 NOV 2022

NE-2, 06 OCT 2022 to 03 NOV 2022

5 NM Holding Pattern	4500	RIYOV	UYUNI	OYADU	tr 327°	WODIT
----------------------	------	-------	-------	-------	---------	-------

VGSI and RNAV glidepath not coincident (VGSI Angle 3.00/TCH 30).



CATEGORY	A	B	C	D
LPV DA	2075-1	312 (400-1)		NA
LNAV/VNAV DA	2351-2	588 (600-2)		NA
LNAV MDA	2260-1	497 (500-1)		NA
CIRCLING	2380-1	617 (700-1)		NA

ELEV 1763	TDZE 1763
-----------	-----------

