

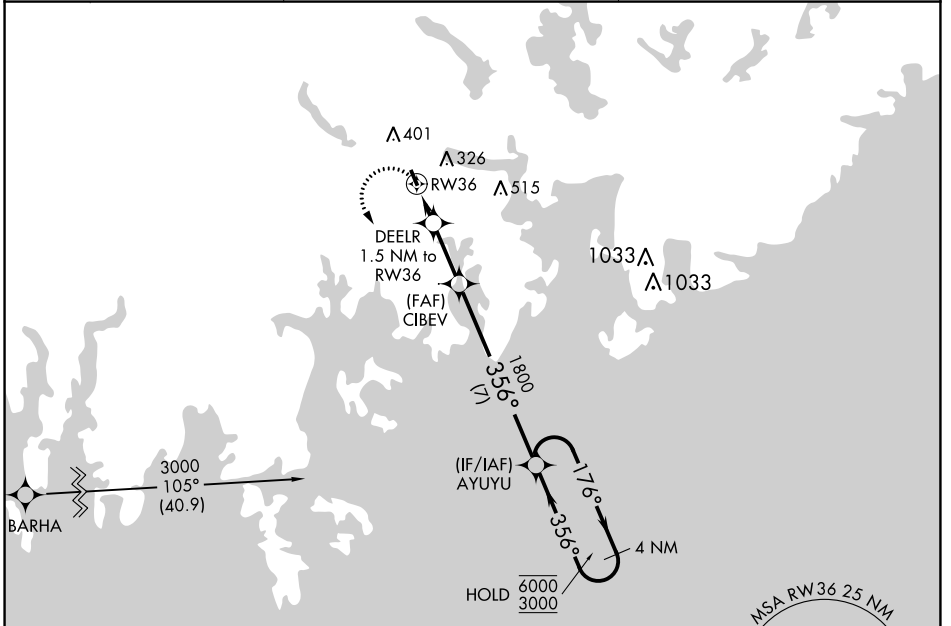
APP CRS 356°	Rwy Idg 2880
	TDZE 96
	Apt Elev 96

RNAV (GPS) RWY 36

MACHIAS VALLEY (MVM)

RNP APCH - GPS.	MISSED APPROACH: Climbing left turn to 3000 direct AYUYU and hold, continue climb-in-hold to 3000.
▼ Helicopter visibility reduction below 1 SM NA. Procedure NA at night.	
▲ NA For uncompensated Baro-VNAV systems, LNAV/VNAV NA below -15°C or above 54°C.	

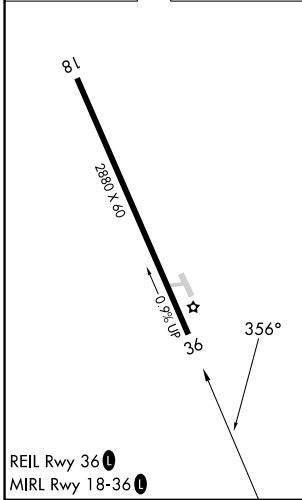
AWOS-AV 122.8	BOSTON CENTER 124.25 290.5	UNICOM 122.8 (CTAF) 0
-------------------------	--------------------------------------	---------------------------------



NE-1, 22 FEB 2024 to 21 MAR 2024

NE-1, 22 FEB 2024 to 21 MAR 2024

ELEV 96	TDZE 96
---------	---------



REIL Rwy 36 **0**
MIRL Rwy 18-36 **0**

3000	AYUYU	AYUYU	4 NM Holding Pattern	
	DEELR 1.5 NM to RW36	CIBEV 1800	6000 3000	
	RW36 780	AYUYU 1800	GP 4.10° TCH 40	
	1.5 NM	2.3 NM	7 NM	
CATEGORY	A	B	C	D
LNAV/VNAV DA	678-1¾	582 (600-1¾)		NA
LNAV MDA	580-1	484 (500-1)		NA
CIRCLING	700-1 604 (700-1)	760-1 664 (700-1)		NA