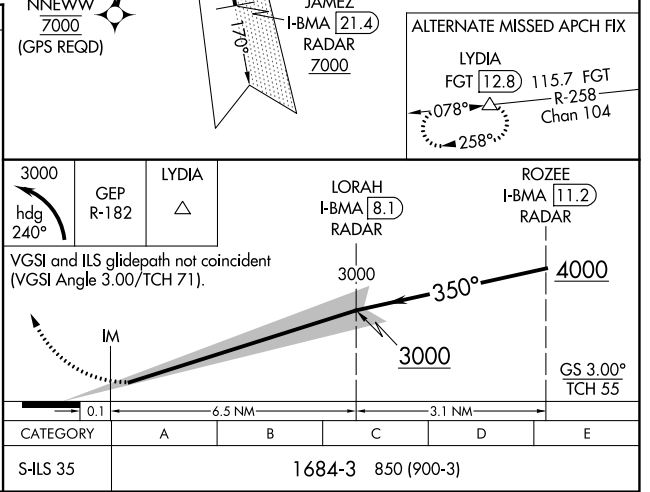
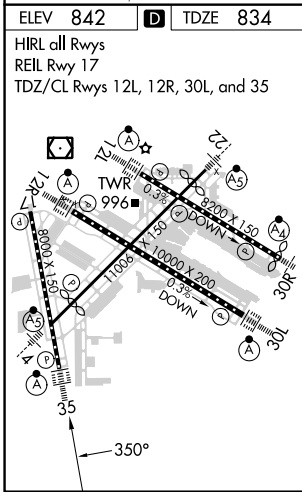
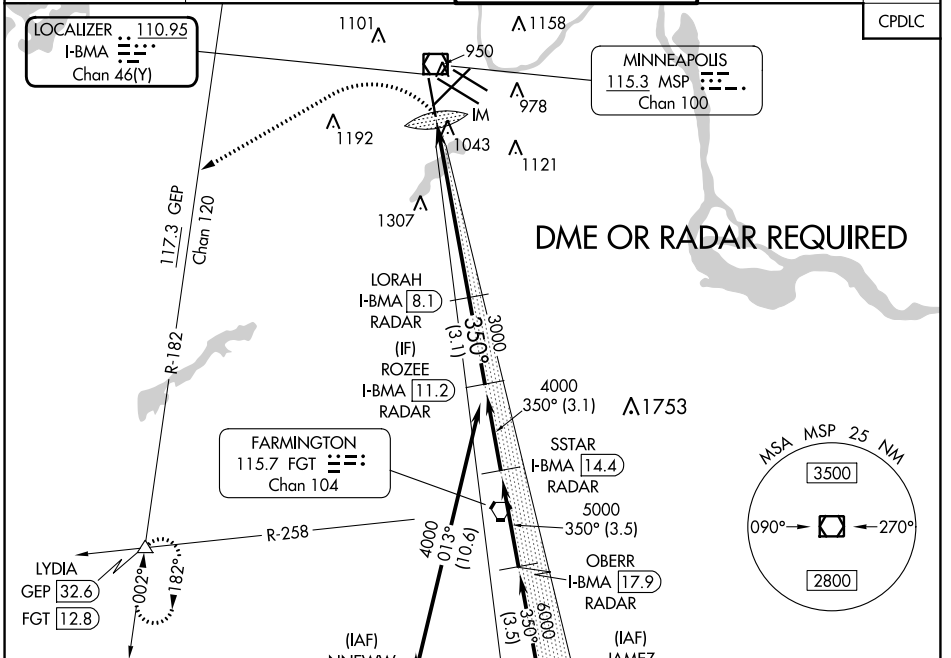


LOC/DME I-BMA 110.95 Chan 46 (Y)	APP CRS 350°	Rwy ldg TDZE Apt Elev	8000 834 842
--	------------------------	-----------------------------	---

ILS V RWY 35 (CONVERGING)

MINNEAPOLIS-ST PAUL INTL/WOLD-CHAMBERLAIN (MSP)

▽ Inop table does not apply. ▲ NA No autoland on ILS V RWY 35 (CONVERGING). Simultaneous approach authorized.	ALS-F-2	MISSED APPROACH: Climbing left turn to 3000 on heading 240° and on GEP VORTAC R-182 to LYDIA INT/GEF 32.6 DME and hold.		
	D-ATIS ARR 135.35 239.275 DEP 120.8	MINNEAPOLIS APP CON 118.725 335.65 (Rwy 35) 119.3 335.65 (12L-30R, 4-22, 17) 126.95 335.65 (12R-30L)	MINNEAPOLIS TOWER 123.675 273.55 (17-35) 123.95 273.55 (12L-30R) 126.7 273.55 (12R-30L, 4-22)	GND CON N 121.8 348.6 S 121.9 348.6 W 127.925 348.6



NC-1, 22 FEB 2024 to 21 MAR 2024

NC-1, 22 FEB 2024 to 21 MAR 2024