

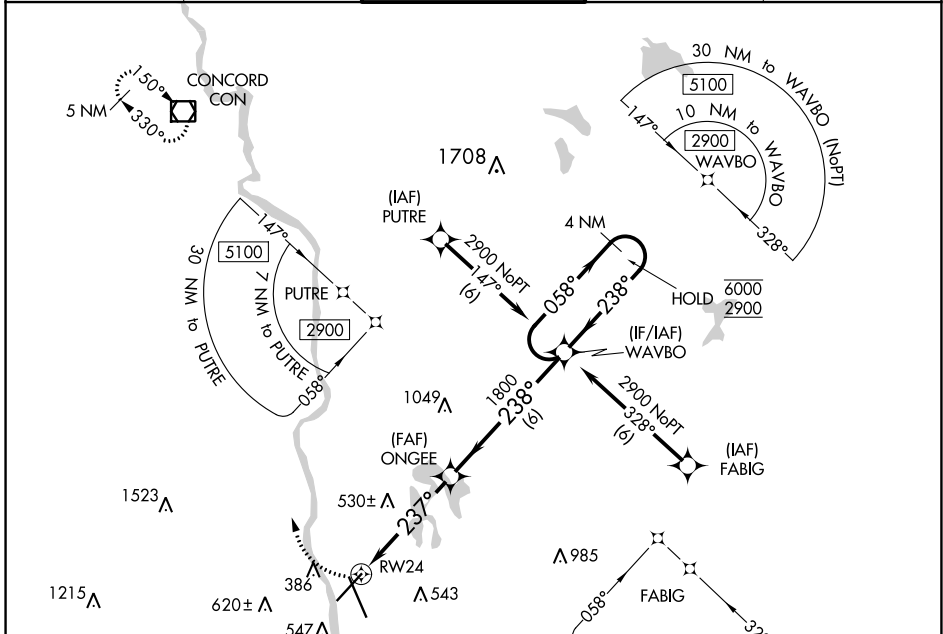
APP CRS	Rwy Idg	6850
237°	TDZE	242
	Apt Elev	266

RNAV (GPS) RWY 24

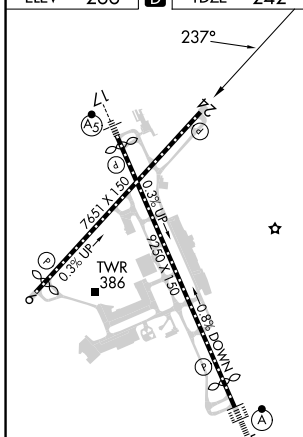
MANCHESTER BOSTON RGNL (MHT)

RNP APCH.		MISSED APPROACH: Climbing right turn to 5000 direct CON VOR/DME and hold. Continue climb-in-hold to 5000.		
▼ Rwy 24 helicopter visibility reduction below 4000 NA.				

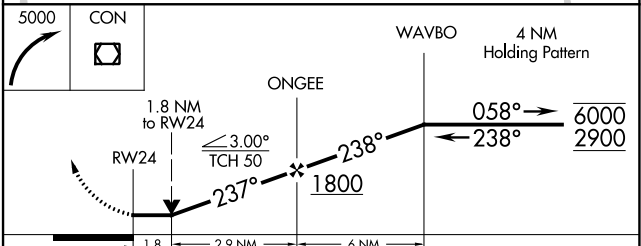
ATIS 119.55	BOSTON APP CON 124.9 269.075	MANCHESTER TOWER 121.3 239.025	GND CON 121.9	CLNC DEL 135.9
-----------------------	--	--	-------------------------	--------------------------



ELEV	266	D	TDZE	242
------	------------	----------	------	------------



REIL Rws 6 and 24
 TDZ/CL Rws 17 and 35
 HIRL Rws 6-24 and 17-35



CATEGORY	A	B	C	D
LNAV MDA	860/55	618 (600-1)	860-1¼	618 (600-1¼)

NE-1, 22 FEB 2024 to 21 MAR 2024

NE-1, 22 FEB 2024 to 21 MAR 2024