

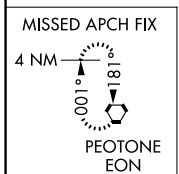
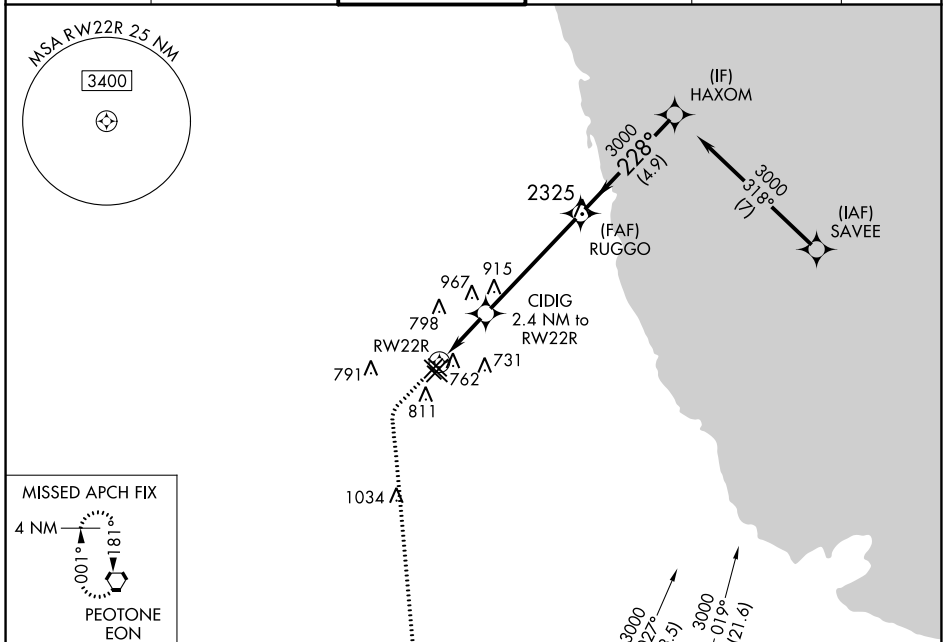
WAAS CH <b>56641</b> <b>W22B</b>	APP CRS <b>228°</b>	Rwy Idg TDZE <b>614</b> Apt Elev <b>620</b>
--	------------------------	---

# RNAV (GPS) RWY 22R

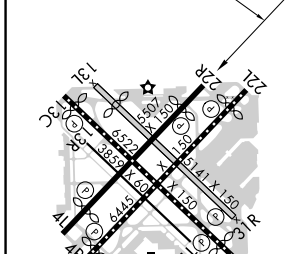
CHICAGO MIDWAY INTL (MDW)

RNP APCH.	MISSED APPROACH: Climb to 1100 then climbing left turn to 2600 direct VORTAC and on track 187° to EON VORTAC and hold.
<p>▼ Circling to Rwy 31R NA at night. For uncompensated Baro-VNAV systems, LNAV/VNAV NA below -19°C or above 54°C.</p> <p>▲ Rwy 22R helicopter visibility reduction below ¾ SM NA.</p>	

D-ATIS <b>132.75</b>	CHICAGO APP CON <b>128.2 388.0</b>	MIDWAY TOWER <b>135.2 269.125</b>	GND CON <b>118.075</b>	CLNC DEL <b>124.625</b>	CPDLC
-------------------------	---------------------------------------	--------------------------------------	---------------------------	----------------------------	-------



ELEV 620	<b>D</b>	TDZE 614
----------	----------	----------



HIRL Rws 4R-22L and 13C-31C  
MIRL Rws 4L-22R, 13L-31R, and 13R-31L  
REIL Rws 4R, 22L, and 31C  
RLS Rws 13C and 31C

1100	2600	IGECY	EON	VGSI and RNAV glidepath not coincident (VGSI Angle 3.00/TCH 35).
↑	↶	✧	tr 187°	✧
*LNAV only.		CIDIG 2.4 NM to RWY 22R	RUGGO	HAXOM
RWY 22R		*1.2 NM to RWY 22R	3000	3000
↶		*1420	228°	GP 3.01° TCH 55
1.2 NM		1.2 NM	4.9 NM	4.9 NM
CATEGORY	A	B	C	D
LPV DA	893-7/8		279 (300-7/8)	
LNAV/VNAV DA	1005-1/8		391 (400-1/8)	
LNAV MDA	1020-1	406 (400-1)	1020-1/8	406 (400-1/8)
<b>C</b> CIRCLING	1120-1	500 (500-1)	1340-2	1340-2 1/4
			720 (800-2)	720 (800-2 1/4)

EC-3, 22 FEB 2024 to 21 MAR 2024

EC-3, 22 FEB 2024 to 21 MAR 2024