

VORTAC MCB <b>116.7</b> Chan <b>114</b>	APP CRS <b>233°</b>	Rwy Idg TDZE Apt Elev	<b>N/A</b> <b>N/A</b> <b>413</b>
---	------------------------	-----------------------------	--

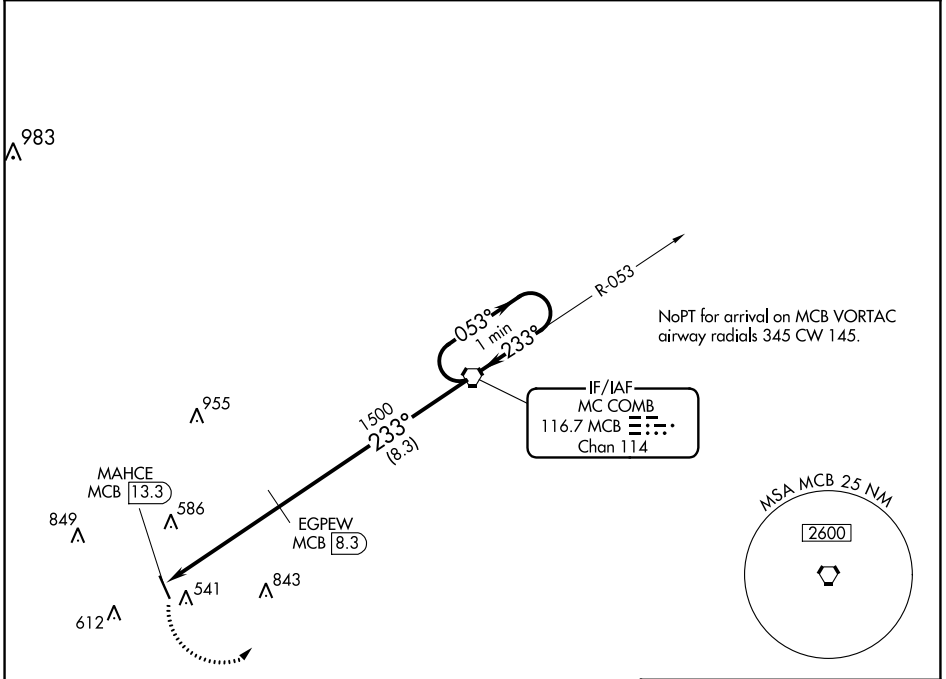
# VOR/DME-A

MC COMB/PIKE COUNTY/JOHN E LEWIS FLD (MCB)

**⚠** When local altimeter setting not received, use Natchez altimeter setting and increase MDA 140 feet and Cat C and D visibility ¼ mile.

**⚠** MISSED APPROACH: Climbing left turn to 2000 direct MCB VORTAC and hold

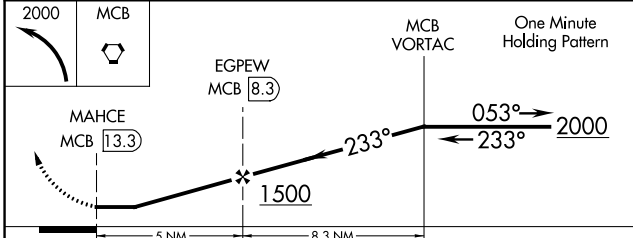
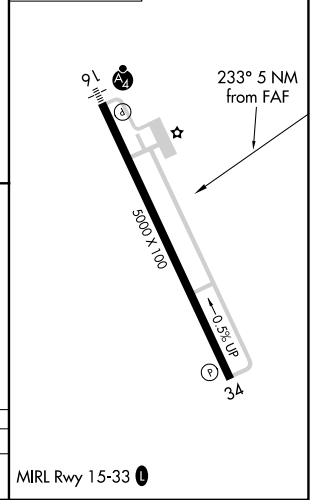
ASOS <b>119.025</b>	HOUSTON CENTER <b>126.8 327.8</b>	UNICOM <b>123.05 (CTAF) 0</b>
------------------------	--------------------------------------	----------------------------------



SC-4, 22 FEB 2024 to 21 MAR 2024

SC-4, 22 FEB 2024 to 21 MAR 2024

ELEV 413



CATEGORY	A	B	C	D
<b>C</b> CIRCLING	880-1	467 (500-1)	940-1½ 527 (600-1½)	1160-2½ 747 (800-2½)

MIRL Rwy 15-33 0