

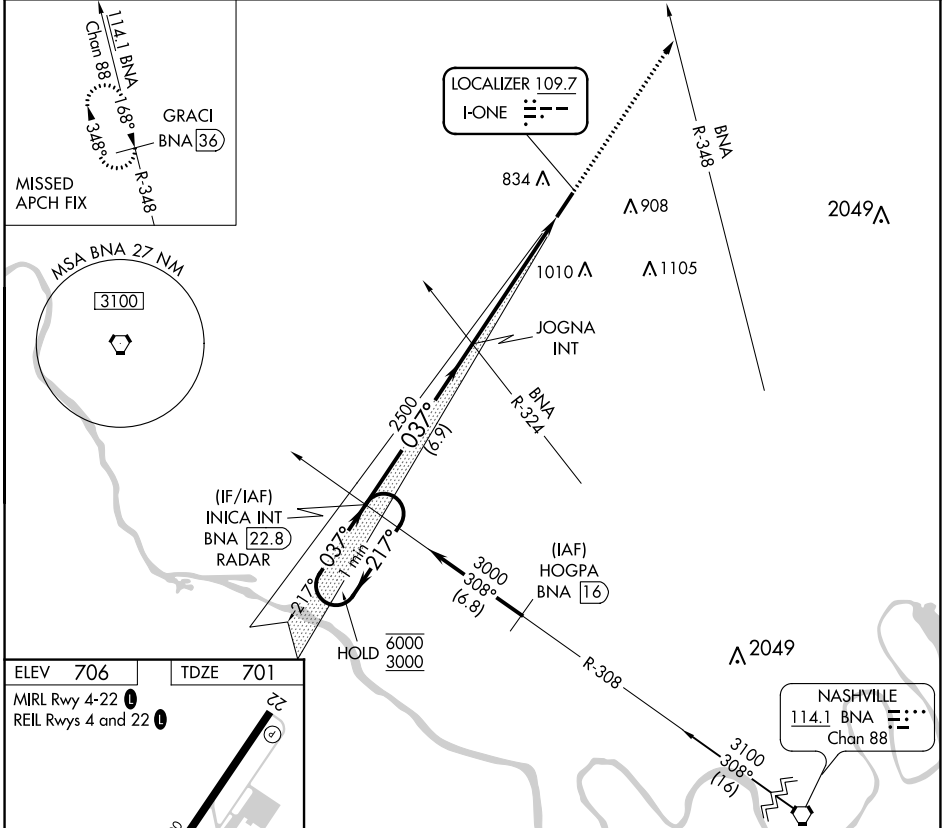
# LOC RWY 4

SPRINGFIELD ROBERTSON COUNTY (M91)

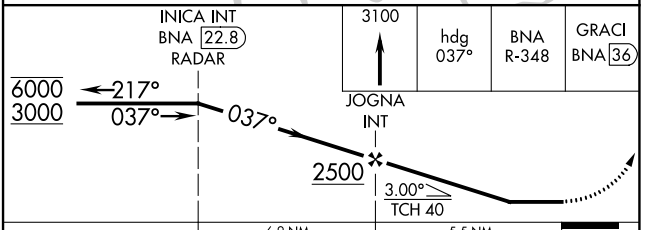
LOC I-ONE <b>109.7</b>	APP CRS <b>037°</b>	Rwy Idg <b>5505</b> TDZE <b>701</b> Apt Elev <b>706</b>
---------------------------	------------------------	---

**NA** Rwy 4 helicopter visibility reduction below 3/4 SM NA. MISSED APPROACH: Climb to 3100 on heading 037° and BNA VORTAC R-348, to GRACI/BNA 36 DME and hold.

AWOS-3 <b>120.675</b>	NASHVILLE APP CON <b>119.35 372.0</b>	UNICOM <b>123.0 (CTAF) 0</b>
--------------------------	--	---------------------------------



ELEV <b>706</b>	TDZE <b>701</b>				
MIRL Rwy 4-22 <b>0</b>	REIL Rwy 4 and 22 <b>0</b>				
5585 x 100					
FAF to MAP 5.5 NM					
Knots	60	90	120	150	180
Min:Sec	5:30	3:40	2:45	2:12	1:50



CATEGORY	A	B	C	D
S-4	1180-1 479 (500-1)		1180-1 <sup>3</sup> / <sub>8</sub> 479 (500-1 <sup>3</sup> / <sub>8</sub> )	
<b>C</b> CIRCLING	1180-1 474 (500-1)		1360-1 <sup>3</sup> / <sub>4</sub> 654 (700-1 <sup>3</sup> / <sub>4</sub> )	1540-2 <sup>3</sup> / <sub>4</sub> 834 (900-2 <sup>3</sup> / <sub>4</sub> )

SE-1, 22 FEB 2024 to 21 MAR 2024

SE-1, 22 FEB 2024 to 21 MAR 2024

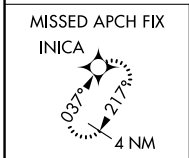
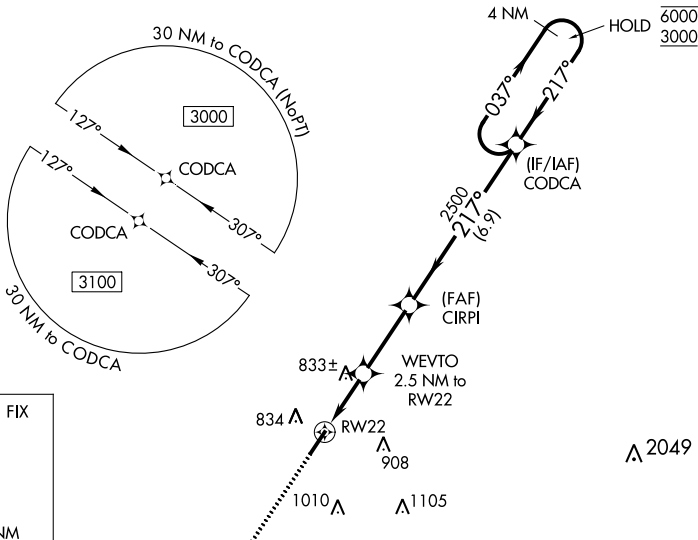
WAAS CH <b>42926</b> <b>W22A</b>	APP CRS <b>217°</b>	Rwy ldg TDZE Apt Elev	<b>5505</b> <b>706</b> <b>706</b>
--	------------------------	-----------------------------	---

# RNAV (GPS) RWY 22

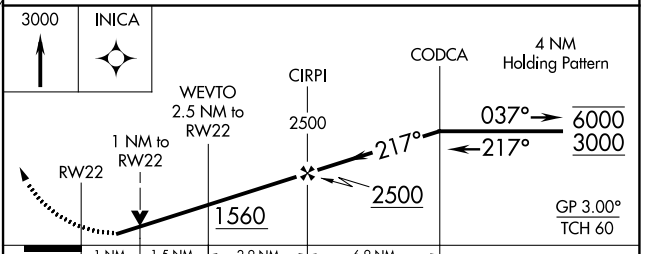
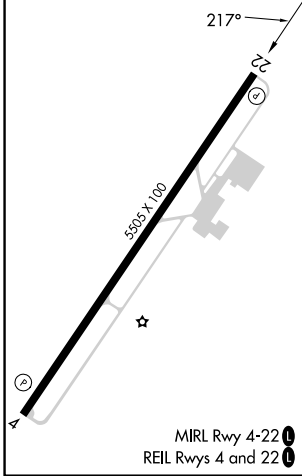
SPRINGFIELD ROBERTSON COUNTY (M91)

RNP APCH - GPS.		MISSED APPROACH: Climb to 3000 direct INICA and hold.
<p><b>▽</b> Rwy 22 helicopter visibility reduction below ¾ SM NA. For uncompensated Baro-VNAV systems,  <b>▲</b> NA LNAV/VNAV NA below -16°C or above 39°C.</p>		

AWOS-3 <b>120.675</b>	NASHVILLE APP CON <b>119.35 372.0</b>	UNICOM <b>123.0 (CTAF) 0</b>
--------------------------	--	---------------------------------



ELEV <b>706</b>	TDZE <b>706</b>
-----------------	-----------------



CATEGORY	A	B	C	D
LPV DA	975-7/8		269 (300-7/8)	
LNAV/VNAV DA	1010-7/8		304 (400-7/8)	
LNAV MDA	1100-1	394 (400-1)	1100-1 1/8	394 (400-1 1/8)
<b>C</b> CIRCLING	1140-1 434 (500-1)	1160-1 454 (500-1)	1360-1 3/4 654 (700-1 3/4)	1540-2 3/4 834 (900-2 3/4)

SE-1, 22 FEB 2024 to 21 MAR 2024

SE-1, 22 FEB 2024 to 21 MAR 2024

WAAS CH <b>86626</b> <b>W04A</b>	APP CRS <b>037°</b>	Rwy Idg TDZE Apt Elev	<b>5505</b> <b>701</b> <b>706</b>
--	------------------------	-----------------------------	---

# RNAV (GPS) RWY 4

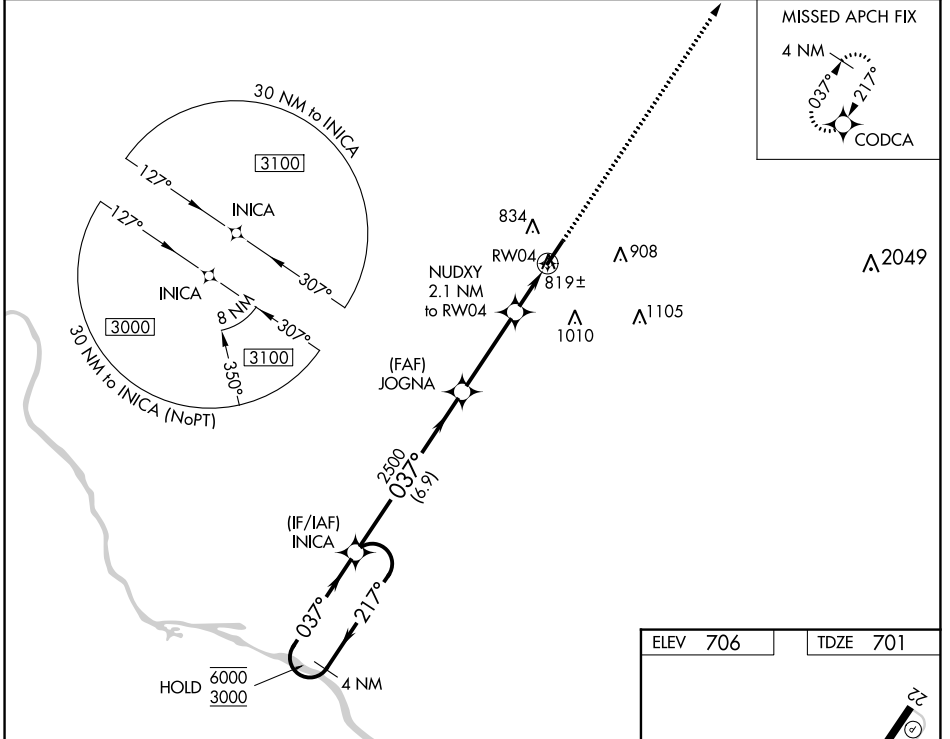
SPRINGFIELD ROBERTSON COUNTY (M91)

RNP APCH - GPS.

**NA** Rwy 4 helicopter visibility reduction below 3/4 SM NA.

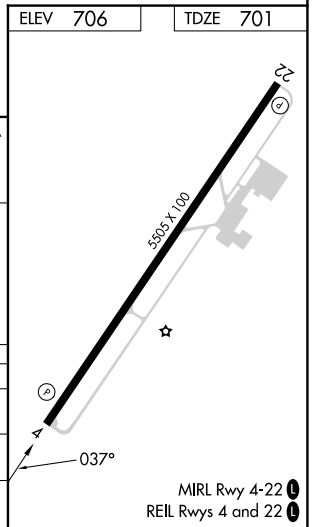
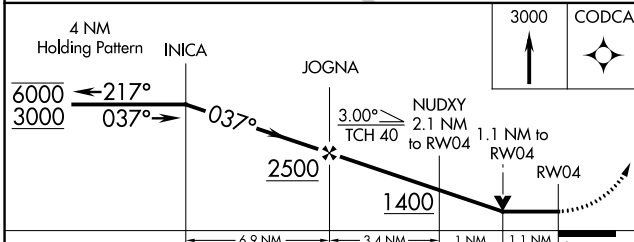
MISSED APPROACH:  
Climb to 3000 direct  
CODCA and hold.

AWOS-3 <b>120.675</b>	NASHVILLE APP CON <b>119.35 372.0</b>	UNICOM <b>123.0 (CTAF) 0</b>
--------------------------	--	---------------------------------



SE-1, 22 FEB 2024 to 21 MAR 2024

SE-1, 22 FEB 2024 to 21 MAR 2024



CATEGORY	A	B	C	D
LP MDA	1100-1	399 (400-1)	1100-1 1/8	399 (400-1 1/8)
LNAV MDA	1100-1	399 (400-1)	1100-1 1/8	399 (400-1 1/8)
<b>C</b> CIRCLING	1140-1 434 (500-1)	1160-1 454 (500-1)	1360-1 3/4 654 (700-1 3/4)	1540-2 3/4 834 (900-2 3/4)