

APP CRS	Rwy Idg	5100
242°	TDZE	3411
	Apt Elev	3426

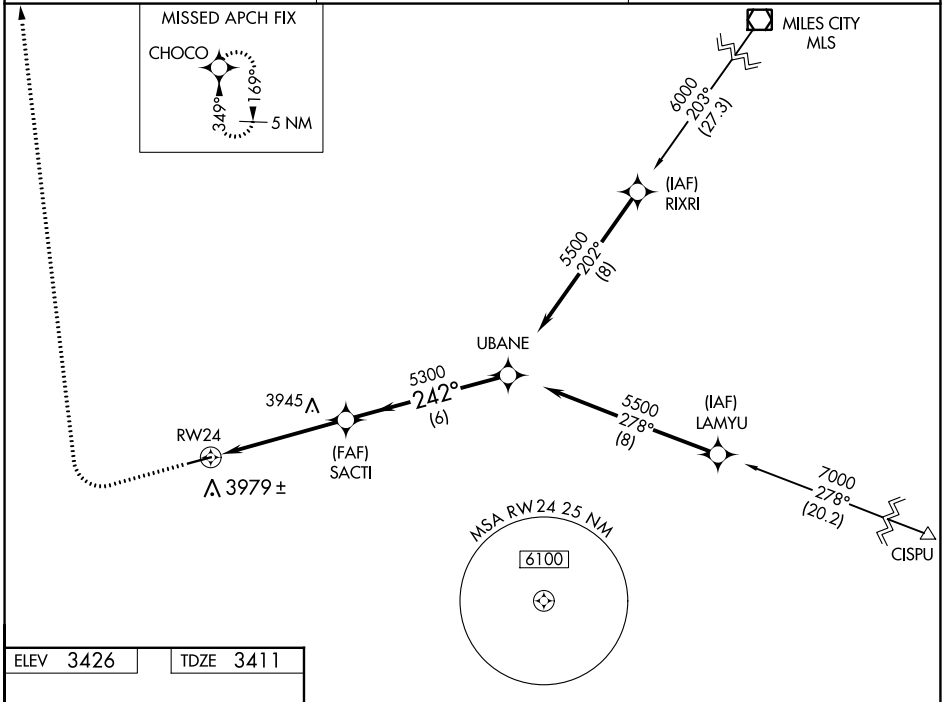
GPS RWY 24

COLSTRIP (M46)

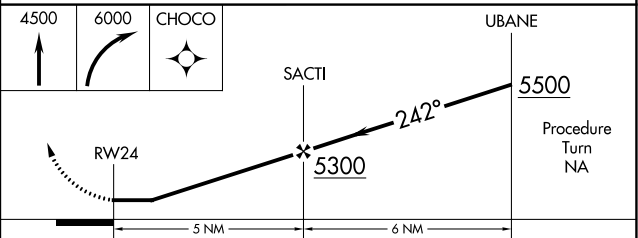
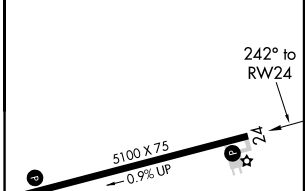
NA When local altimeter not received use Miles City altimeter setting. Helicopter visibility reduction below 3/4 SM NA.

MISSED APPROACH: Climb to 4500 then climbing right turn to 6000 direct CHOCO WP and hold.

AWOS-AV 122.7	SALT LAKE CENTER 126.85 305.2	UNICOM 122.7 (CTAF)
-------------------------	---	-------------------------------



ELEV 3426	TDZE 3411
-----------	-----------



CATEGORY	A	B	C	D
S-24	4200-1 789 (800-1)	4200-1¼ 789 (800-1¼)	4200-2¼ 789 (800-2¼)	NA
CIRCLING	4340-1¼	914 (1000-1¼)	4340-2¾ 914 (1000-2¾)	NA
MILES CITY ALTIMETER SETTING				
S-24	4440-1¼ 1029 (1100-1¼)	4440-1½ 1029 (1100-1½)	4440-2¾ 1029 (1100-2¾)	NA
CIRCLING	4580-1¼ 1154 (1200-1¼)	4580-1½ 1154 (1200-1½)	4580-3 1154 (1200-3)	NA

NW-1, 22 FEB 2024 to 21 MAR 2024

NW-1, 22 FEB 2024 to 21 MAR 2024

APP CRS	Rwy Idg	5100
061°	TDZE	3426
	Apt Elev	3426

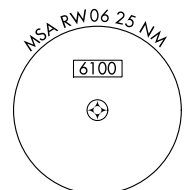
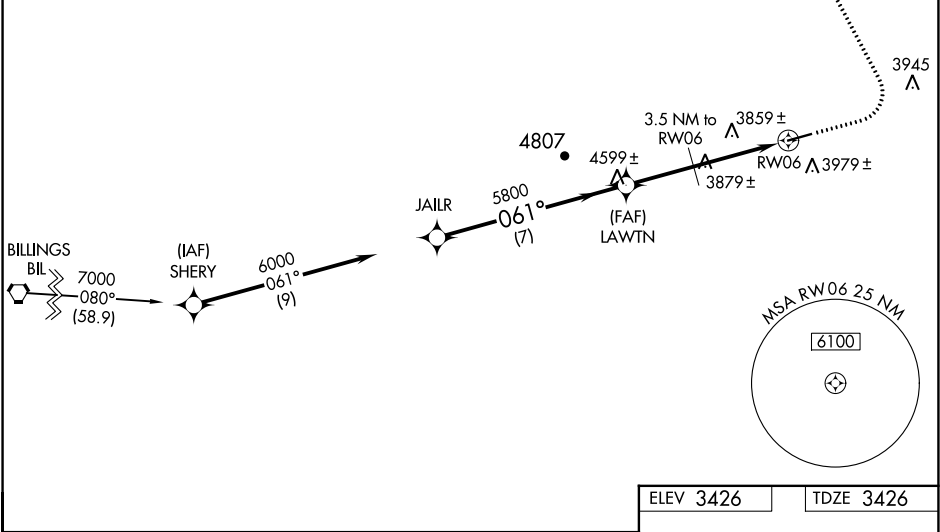
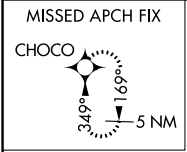
GPS RWY 6

COLSTRIP (M46)

NA When local altimeter not received use Miles City altimeter setting.
-34°C Helicopter visibility reduction below 3/4 SM NA.

MISSED APPROACH: Climb to 4500 then climbing left turn to 6000 direct CHOCO WP and hold.

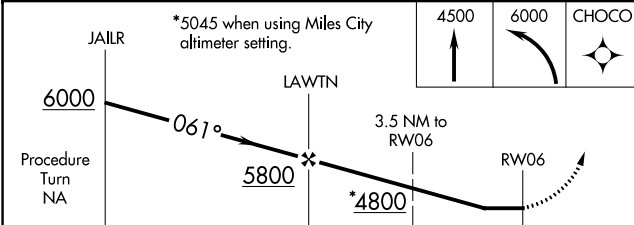
AWOS-AV 122.7	SALT LAKE CENTER 126.85 305.2	UNICOM 122.7 (CTAF) 0
-------------------------	---	---------------------------------



NW-1, 22 FEB 2024 to 21 MAR 2024

NW-1, 22 FEB 2024 to 21 MAR 2024

ELEV 3426	TDZE 3426
-----------	-----------



CATEGORY	A	B	C	D
S-6	4220-1 794 (800-1)	4220-1 1/4 794 (800-1 1/4)	4220-2 1/4 794 (800-2 1/4)	NA
CIRCLING	4340-1 1/4	914 (1000-1 1/4)	4340-2 3/4 914 (1000-2 3/4)	NA
MILES CITY ALTIMETER SETTING				
S-6	NA			
CIRCLING	4580-1 1/4 1154 (1200-1 1/4)	4580-1 1/2 1154 (1200-1 1/2)	4580-3 1154 (1200-3)	NA

