

WAAS CH 58332 W19A	APP CRS 186°	Rwy Idg TDZE 522 Apt Elev 522	5002
--	------------------------	---	-------------

RNAV (GPS) RWY 19

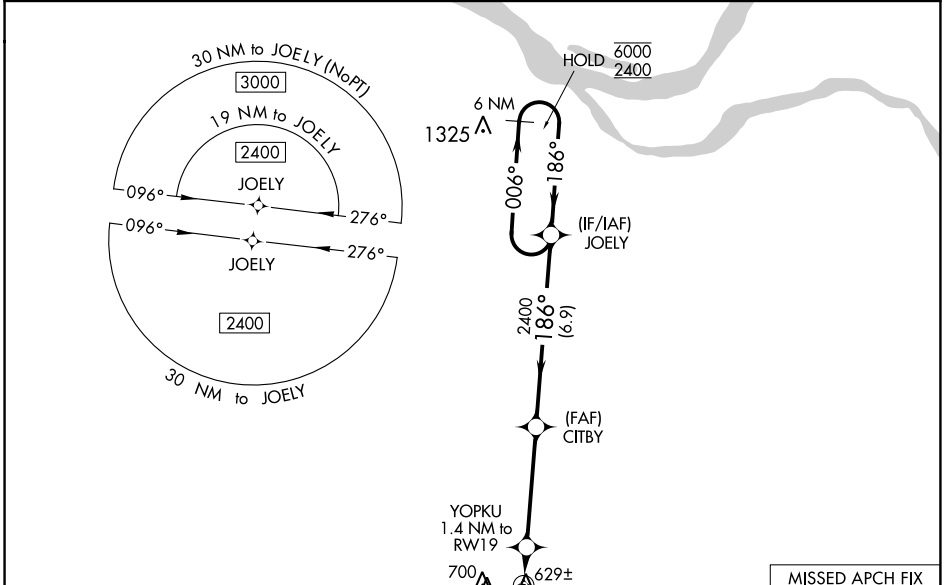
MAYFIELD GRAVES COUNTY (M25)

RNP APCH - GPS.

⚠ Circling Rwy 19 NA at night. Rwy 19 helicopter visibility reduction below 3/4 SM NA. Baro-VNAV NA when using Paducah altimeter setting. For uncompensated Baro-VNAV systems, LNAV/VNAV NA below -16°C or above 54°C. When local altimeter setting not received, use Paducah altimeter setting: increase LPV DA to 833 feet, LNAV/VNAV DA to 977 feet and all visibilities 1/4 SM; increase all MDAs 80 feet and visibility Cats C and D 1/4 SM.

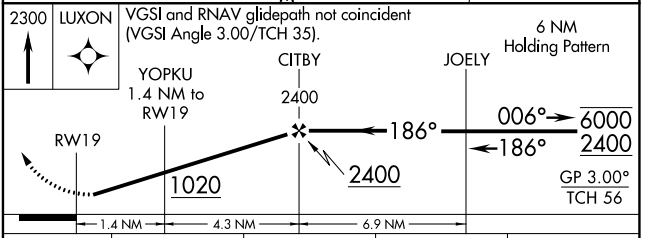
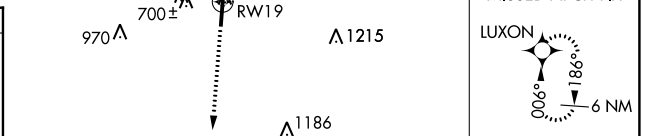
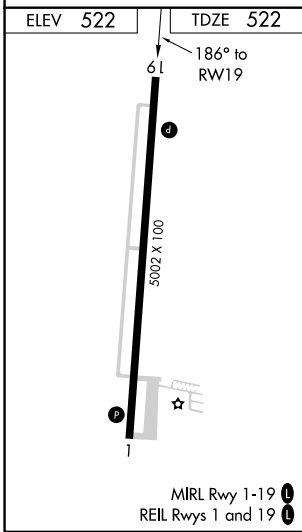
⚠ MISSED APPROACH: Climb to 2300 direct LUXON and hold.

AWOS-3 120.625	MEMPHIS CENTER 133.65 292.15	UNICOM 122.8 (CTAF) 0
--------------------------	--	---------------------------------



SE-1, 22 FEB 2024 to 21 MAR 2024

SE-1, 22 FEB 2024 to 21 MAR 2024



CATEGORY	A	B	C	D
LPV DA	772-1 250 (300-1)			
LNAV/VNAV DA	916-1 1/8 394 (400-1 1/8)			
LNAV MDA	880-1 358 (400-1)			
CIRCLING	1060-1 538 (600-1)	1060-1 1/2 538 (600-1 1/2)	1280-2 1/2 758 (800-2 1/2)	

WAAS CH 78432 W01B	APP CRS 006°	Rwy Idg TDZE 522 Apt Elev 522	5002
--	------------------------	---	-------------

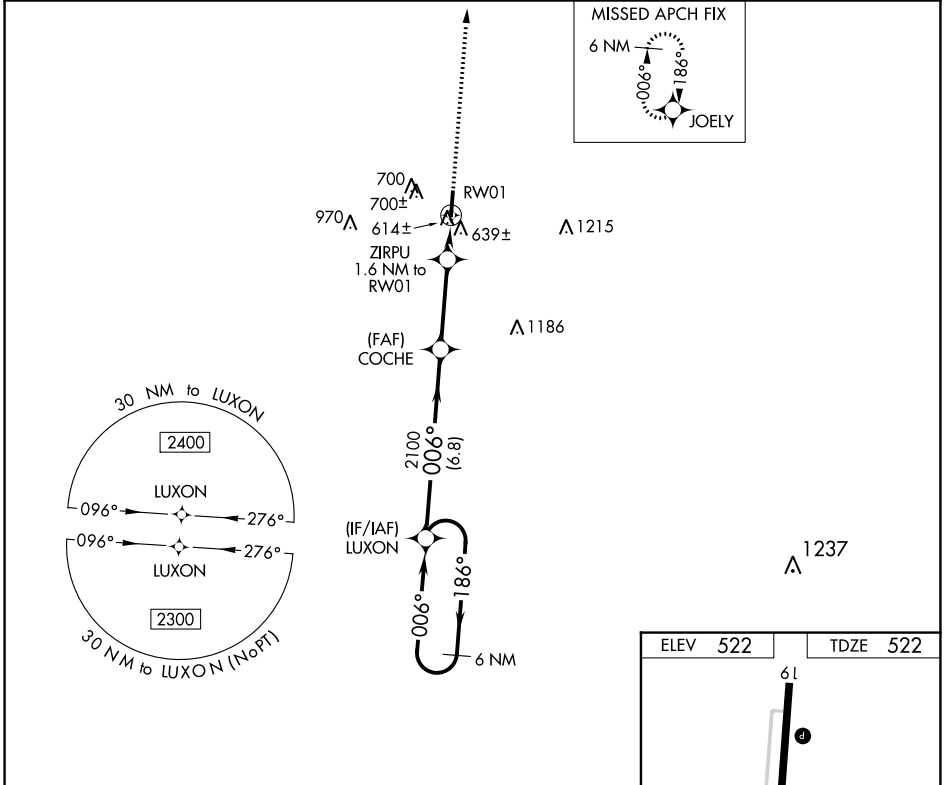
RNAV (GPS) Y RWY 1

MAYFIELD GRAVES COUNTY (M25)

⚠️ NA DME/DME RNP-0.3 NA. When local altimeter setting not received, use Paducah altimeter setting and increase all MDA 80 feet and increase LP Cat C and D visibility $\frac{3}{8}$ mile and LNAV Cat C and D visibility and Circling Cat C and D visibility $\frac{1}{4}$ mile. Rwy 1, 19 helicopter visibility reduction below 1 SM NA. Procedure NA at night.

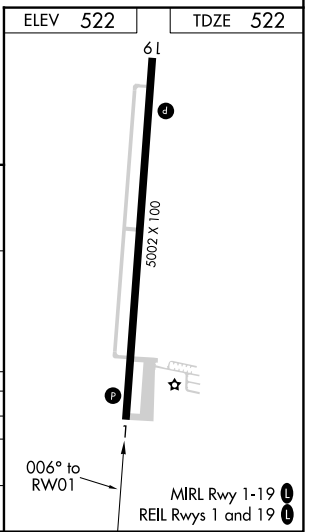
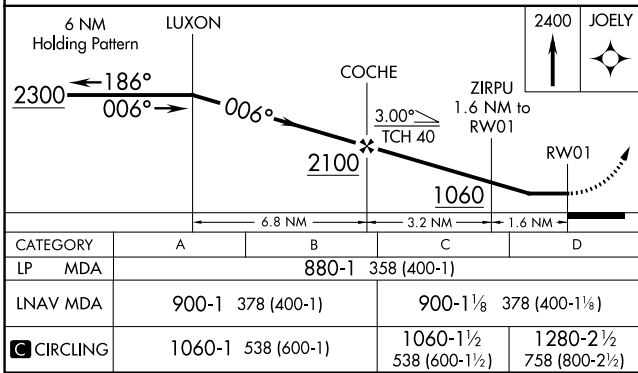
MISSED APPROACH: Climb to 2400 direct JOELY and hold.

AWOS-3 120.625	MEMPHIS CENTER 133.65 292.15	UNICOM 122.8 (CTAF) ①
--------------------------	--	---------------------------------



SE-1, 22 FEB 2024 to 21 MAR 2024

SE-1, 22 FEB 2024 to 21 MAR 2024



WAAS CH 40034 W01A	APP CRS 006°	Rwy Idg TDZE 522 Apt Elev 522
--	------------------------	---

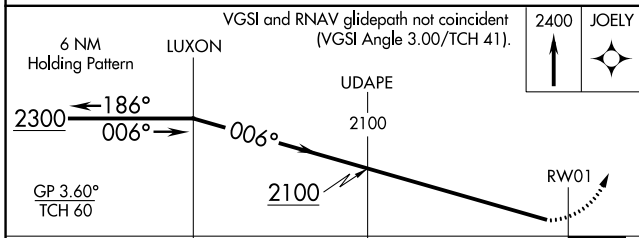
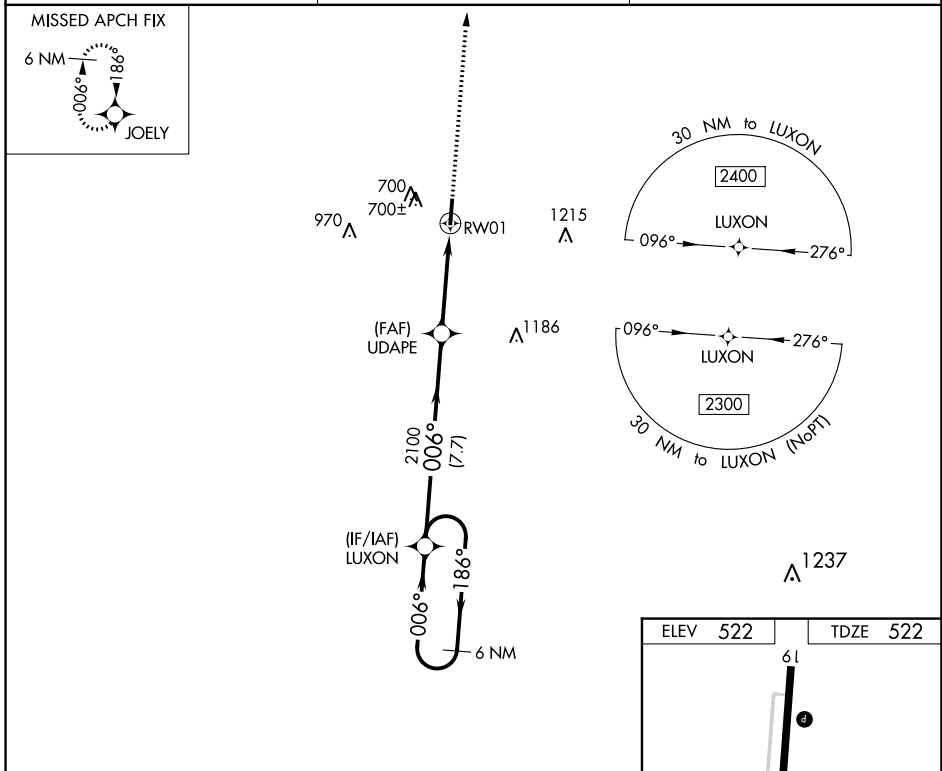
RNAV (GPS) Z RWY 1

MAYFIELD GRAVES COUNTY (M25)

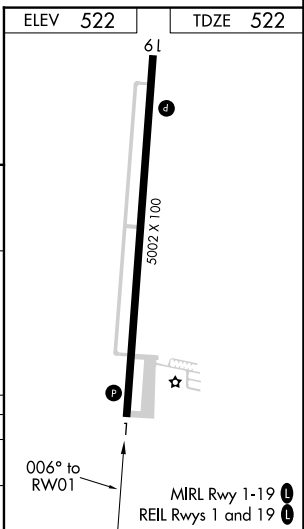
⚠️ NA Baro-VNAV NA when using Paducah altimeter setting. For uncompensated Baro-VNAV systems, LNAV/VNAV NA below -16°C (4°F) or above 54°C (130°F).
 DME/DME RNP-0.3 NA. When local altimeter setting not received, use Paducah altimeter setting and increase all DA 61 feet; increase LNAV/VNAV Cts A and B visibility ¼ mile.
 Rwy 1, 19 helicopter visibility reduction below 1 SM NA. Procedure NA at night.

MISSED APPROACH:
 Climb to 2400 direct
 JOELY and hold.

AWOS-3 120.625	MEMPHIS CENTER 133.65 292.15	UNICOM 122.8 (CTAF) ①
--------------------------	--	---------------------------------



CATEGORY		A	B	C	D
LPV DA		820-1	298 (300-1)		NA
LNAV/VNAV DA		932-1½	410 (500-1½)		NA



SE-1, 22 FEB 2024 to 21 MAR 2024

SE-1, 22 FEB 2024 to 21 MAR 2024

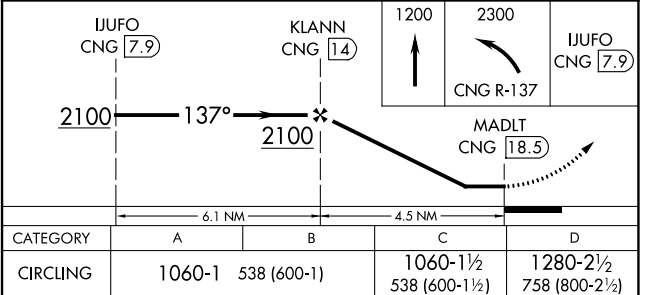
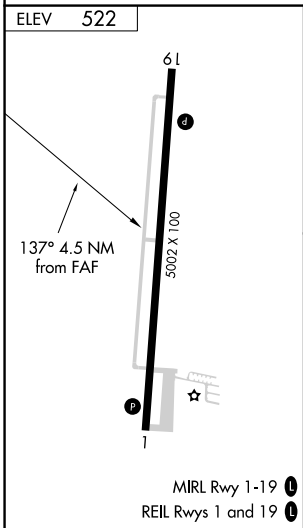
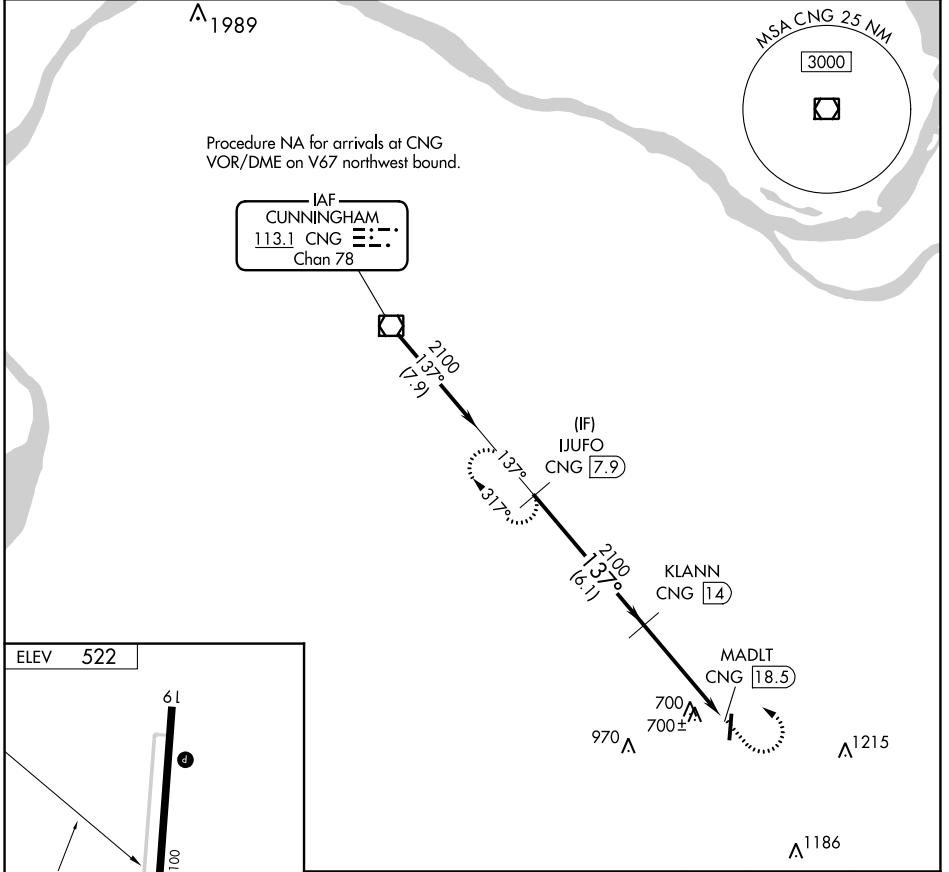
VOR/DME CNG 113.1 Chan 78	APP CRS 137°	Rwy Idg TDZE Apt Elev	N/A N/A 522
---	------------------------	-----------------------------	--

VOR/DME-A
MAYFIELD GRAVES COUNTY (M25)

NA Circling Rwy 1 NA at night. When local altimeter setting not received, use Paducah altimeter setting: increase all MDAs 80 feet and visibility Cats C and D ¼ SM.

MISSED APPROACH: Climb to 1200 then climbing left turn to 2300 on CNG VOR/DME R-137 to IJUFO 7.9 DME and hold.

AWOS-3 120.625	MEMPHIS CENTER 133.65 292.15	UNICOM 122.8 (CTAF)
--------------------------	--	-------------------------------



SE-1, 22 FEB 2024 to 21 MAR 2024

SE-1, 22 FEB 2024 to 21 MAR 2024