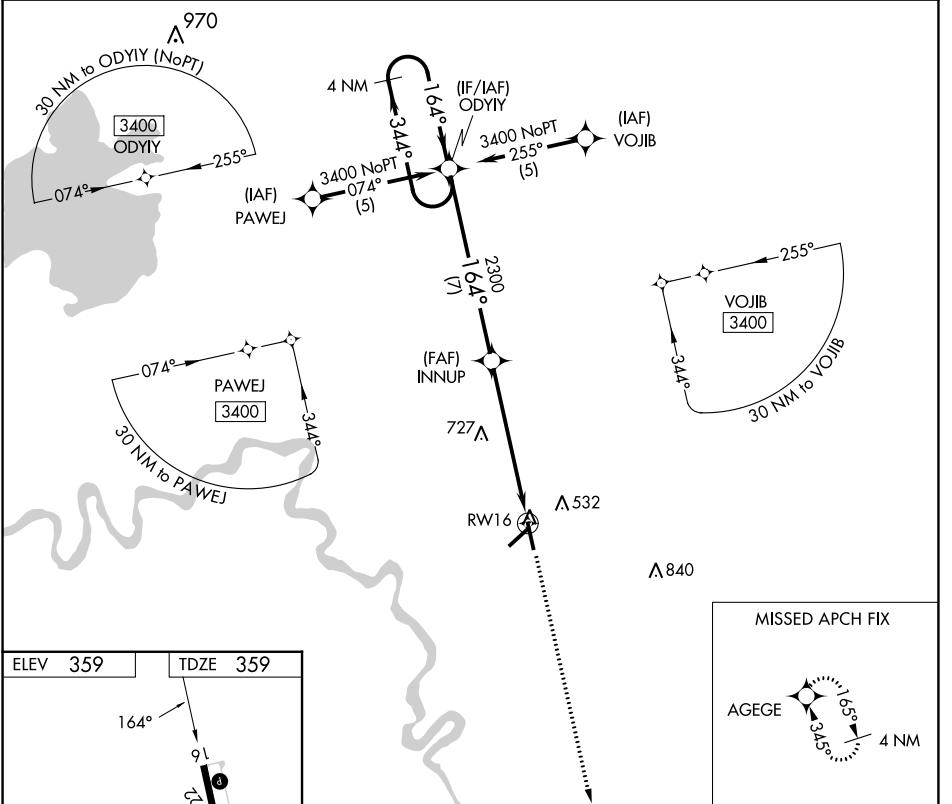


APP CRS 164°	Rwy Idg 5501
	TDZE 359
	Apt Elev 359

RNAV (GPS) RWY 16

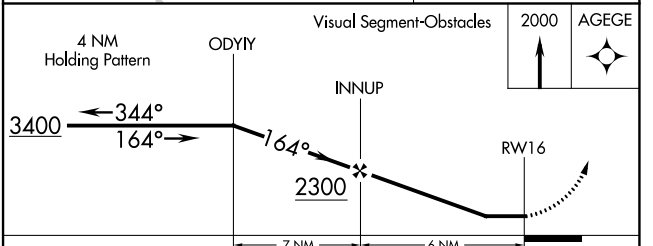
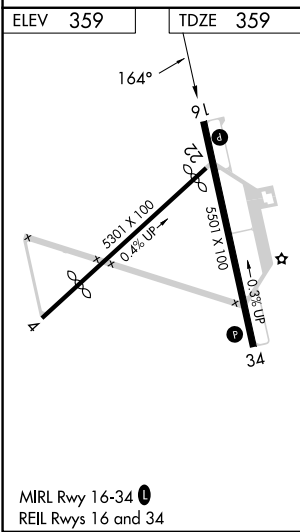
HOPE MUNI (M18)

RNP APCH.		MISSED APPROACH: Climb to 2000 direct AGEGE and hold.
<p>▼ Use Texarkana altimeter setting. Rwy 16 helicopter visibility reduction below ¾ SM NA. Circling Rwy 4, 22, 34 NA at night.</p> <p>▲ NA</p>		
TXK ASOS 120.2	FORT WORTH CENTER 123.925 269.475	UNICOM 122.8 (CTAF) 0



SC-1, 22 FEB 2024 to 21 MAR 2024

SC-1, 22 FEB 2024 to 21 MAR 2024



CATEGORY	A	B	C	D
LNAV MDA	920-1	561 (600-1)	920-1½ 561 (600-1½)	920-1¾ 561 (600-1¾)
C CIRCLING	920-1 561 (600-1)	940-1 581 (600-1)	940-1½ 581 (600-1½)	1100-2½ 741 (800-2½)

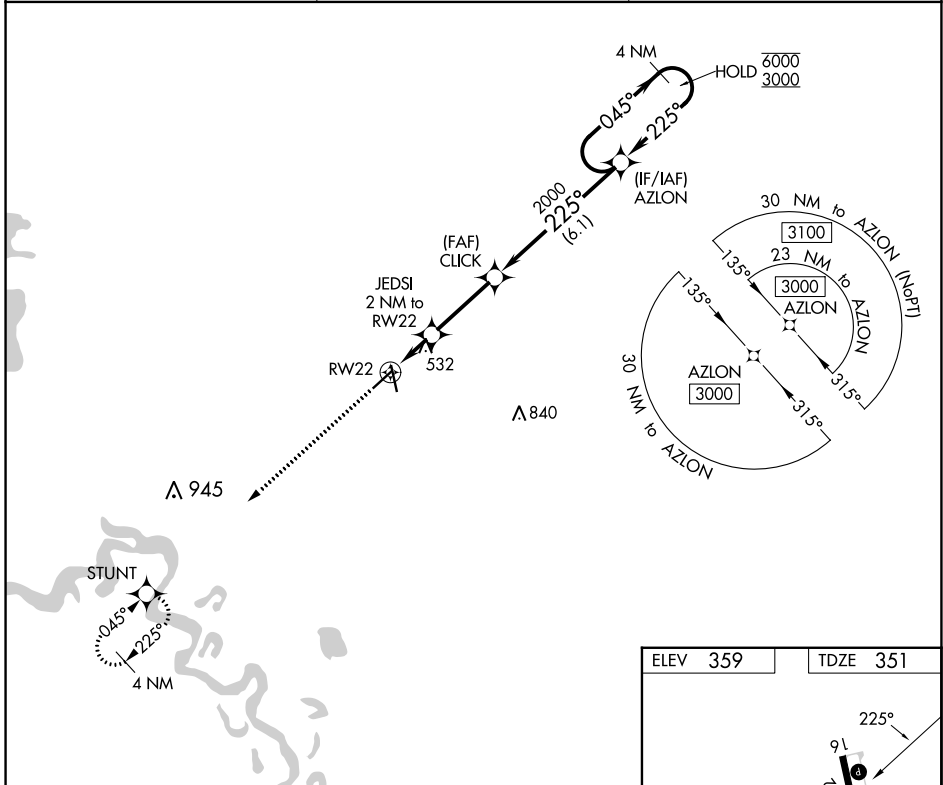
APP CRS	Rwy Idg	4957
225°	TDZE	351
	Apt Elev	359

RNAV (GPS) RWY 22

HOPE MUNI (M18)

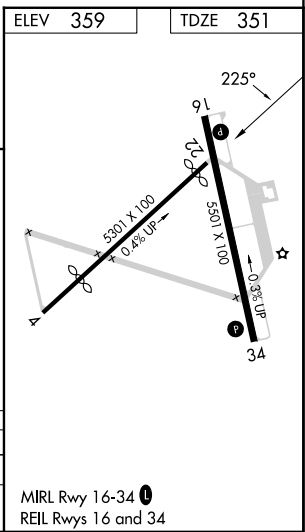
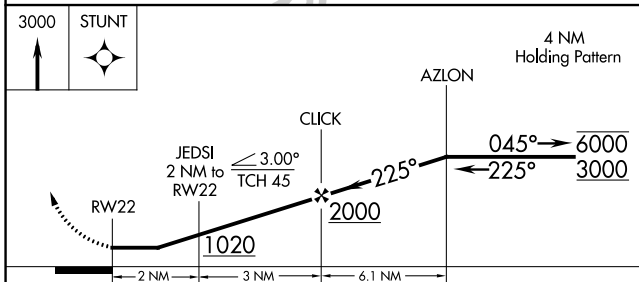
RNP APCH - GPS		MISSED APPROACH: Climb to 3000 direct STUNT and hold.
▼	Procedure NA at night.	
▲ NA	Rwy 22 helicopter visibility reduction below 1 SM NA. Use Texarkana altimeter setting.	

TXK ASOS	FORT WORTH CENTER	UNICOM
120.2	123.925 269.475	122.8 (CTAF) 1



SC-1, 22 FEB 2024 to 21 MAR 2024

SC-1, 22 FEB 2024 to 21 MAR 2024



CATEGORY	A	B	C	D
LNAV MDA	900-1	549 (600-1)	900-1½	549 (600-1½)
CIRCLING	900-1 541 (600-1)	940-1 581 (600-1)	940-1½ 581 (600-1½)	1100-2½ 741 (800-2½)

MIRL Rwy 16-34 1
REIL Rwy 16 and 34

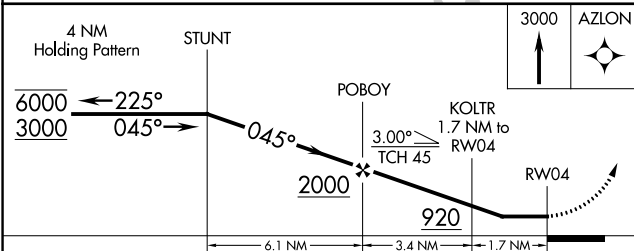
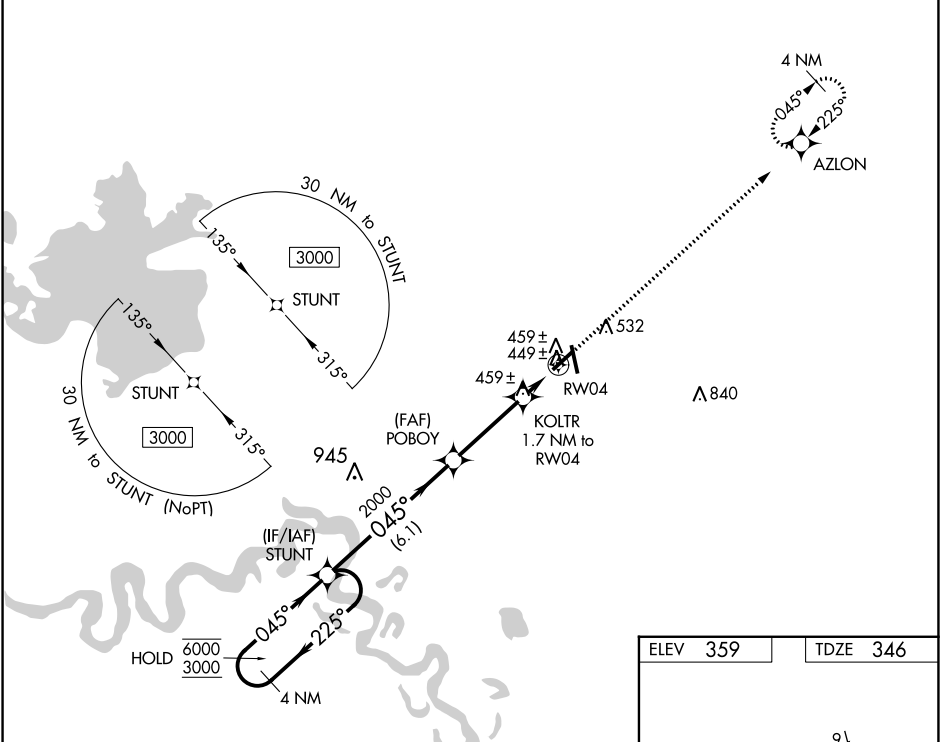
WAAS CH 72637 W04A	APP CRS 045°	Rwy Idg TDZE Apt Elev	4111 346 359
--	------------------------	-----------------------------	---

RNAV (GPS) RWY 4

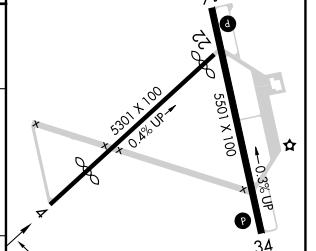
HOPE MUNI (M18)

RNP APCH - GPS.	MISSED APPROACH: Climb to 3000 direct AZLON and hold.
<p>▼ Procedure NA at night.</p> <p>▲ NA Rwy 4 helicopter visibility reduction below 1 SM NA. Use Texarkana altimeter setting.</p>	

TXK ASOS 120.2	FORT WORTH CENTER 123.925 269.475	UNICOM 122.8 (CTAF) 0
--------------------------	---	---------------------------------



ELEV 359	TDZE 346
----------	----------



CATEGORY	A	B	C	D
LP MDA	760-1	414 (500-1)	760-1½	414 (500-1½)
LNAV MDA	780-1	434 (500-1)	780-1¼	434 (500-1¼)
CIRCLING	860-1 501 (600-1)	940-1 581 (600-1)	940-1½ 581 (600-1½)	1100-2½ 741 (800-2½)

MIRL Rwy 16-34 0
REIL Rwys 16 and 34

SC-1, 22 FEB 2024 to 21 MAR 2024

SC-1, 22 FEB 2024 to 21 MAR 2024

VORTAC TXK 116.3 Chan 110	APP CRS 052°	Rwy Idg TDZE Apt Elev	4111 346 359
---	------------------------	-----------------------------	---

VOR RWY 4

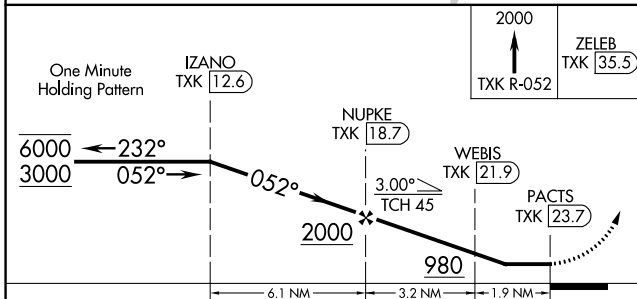
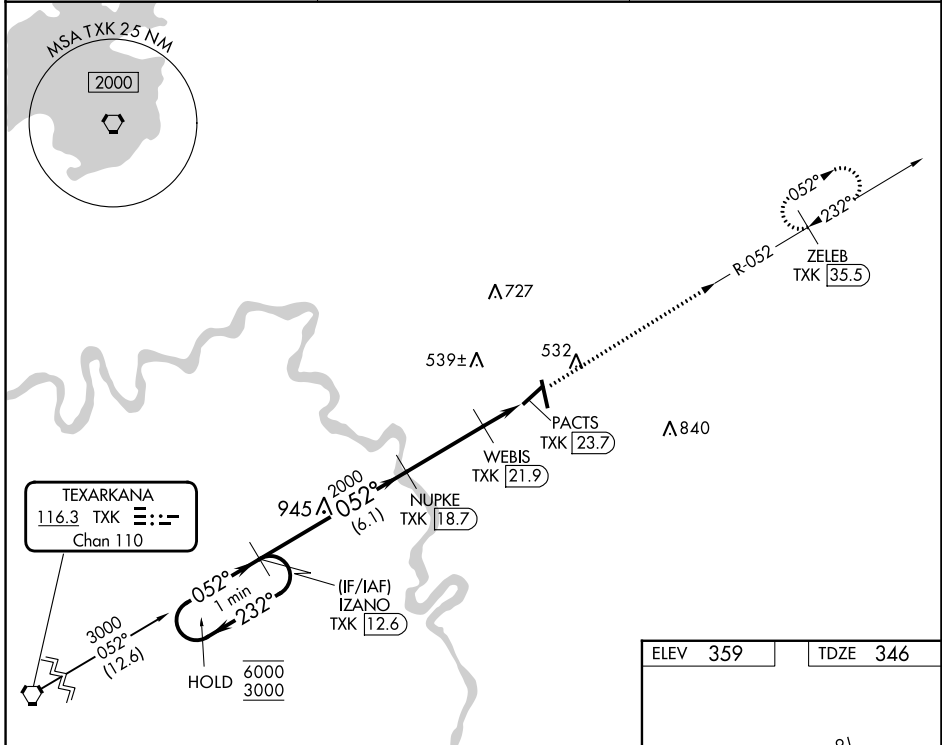
HOPE MUNI (M18)

DME required.

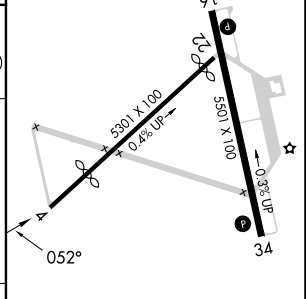
Procedure NA at night. Rwy 4 helicopter visibility reduction below 1 SM NA. Use Texarkana altimeter setting.

MISSED APPROACH: Climb to 2000 on TXK VORTAC R-052 to ZELEB/TXK 35.5 DME and hold.

TXK ASOS 120.2	FORT WORTH CENTER 123.925 269.475	UNICOM 122.8 (CTAF) 0
--------------------------	---	---------------------------------



ELEV 359	TDZE 346
----------	----------



CATEGORY	A	B	C	D
S-4	860-1	514 (600-1)	860-1 $\frac{3}{8}$	514 (600-1 $\frac{3}{8}$)
CIRCLING	860-1 501 (600-1)	940-1 581 (600-1)	940-1 $\frac{1}{2}$ 581 (600-1 $\frac{1}{2}$)	1100-2 $\frac{1}{2}$ 741 (800-2 $\frac{1}{2}$)

MIRL Rwy 16-34 0
REIL Rwys 16 and 34

SC-1, 22 FEB 2024 to 21 MAR 2024

SC-1, 22 FEB 2024 to 21 MAR 2024