

WAAS CH <b>42800</b> <b>W01A</b>	APP CRS <b>014°</b>	Rwy Idg TDZE Apt Elev	<b>8785</b> <b>2170</b> <b>2181</b>
--	------------------------	-----------------------------	---

# RNAV (GPS) RWY 1R

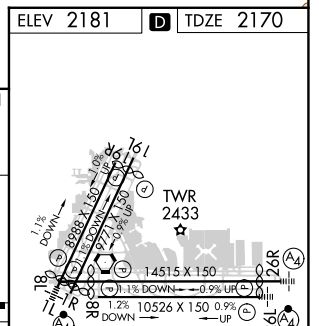
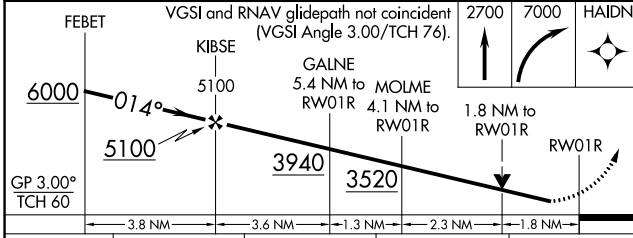
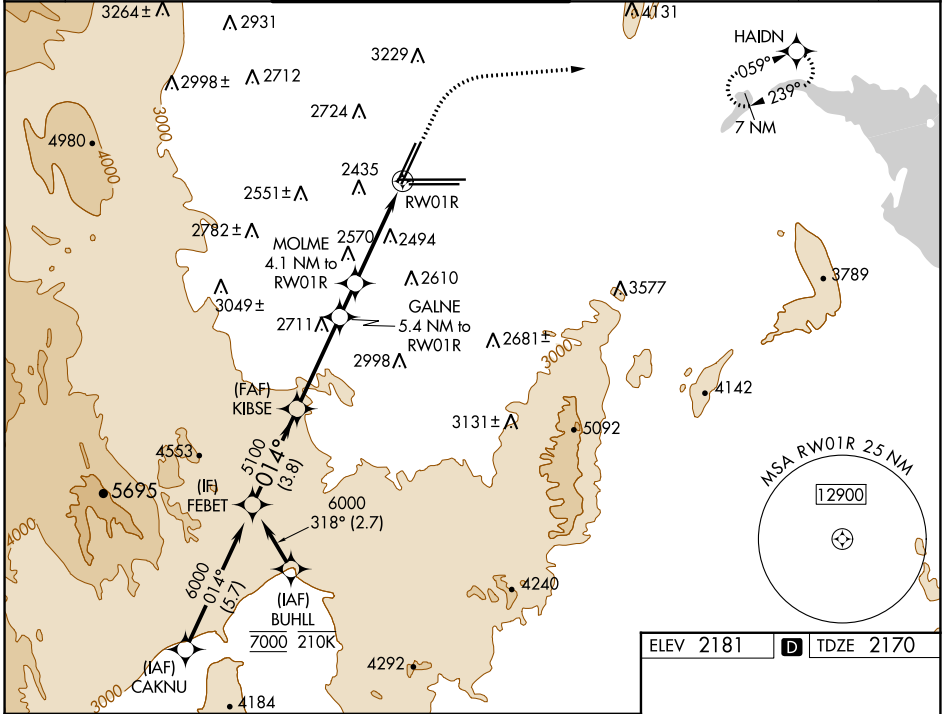
HARRY REID INTL (LAS)

RNP APCH-GPS. RADAR required.

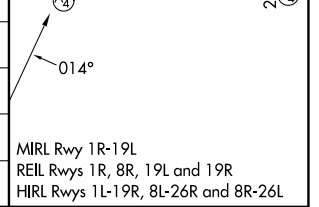
**▽** Rwy 1R helicopter visibility reduction below 3/4 SM NA. For uncompensated Baro-VNAV systems, LNAV/VNAV NA below -1°C or above 54°C.

MISSED APPROACH: Climb to 2700 then climbing right turn to 7000 direct HAIN and hold, continue climb-in-hold to 7000.

D-ATIS <b>132.4</b>	LAS VEGAS APP CON <b>125.025 379.15</b> (West) <b>119.775 282.2</b> (East)	LAS VEGAS TOWER <b>118.75 257.8</b> (Rwy 1L/19R, 1R/19L) <b>119.9 257.8</b> (Rwy 8L/26R, 8R/26L)	GND CON <b>121.1 270.8</b> E of 1R/19L <b>121.9 254.3</b> W of 1R/19L	CLNC DEL <b>118.0</b>	CPDLC
------------------------	--	--	---	--------------------------	-------



CATEGORY	A	B	C	D
LPV DA	2458-7/8		288 (300-7/8)	
LNAV/VNAV DA	2641-13/8		471 (500-13/8)	
LNAV MDA	2820-1	650 (700-1)	2820-17/8	650 (700-17/8)
<b>C</b> CIRCLING	3020-11/4 839 (900-11/4)	3060-11/4 879 (900-11/4)	3100-23/4 919 (1000-23/4)	3540-3 1359 (1400-3)



SW-4, 22 FEB 2024 to 21 MAR 2024

SW-4, 22 FEB 2024 to 21 MAR 2024

MIRL Rwy 1R-19L  
REIL Rws 1R, 8R, 19L and 19R  
HIRL Rws 1L-19R, 8L-26R and 8R-26L