

WAAS CH 70536 W25A	APP CRS 255°	Rwy Idg TDZE Apt Elev	4001 1065 1067
--	------------------------	-----------------------------	---

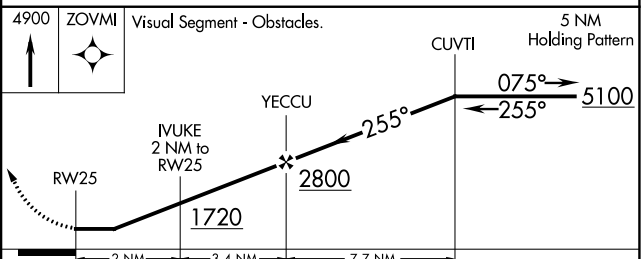
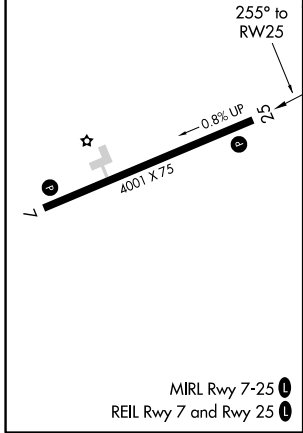
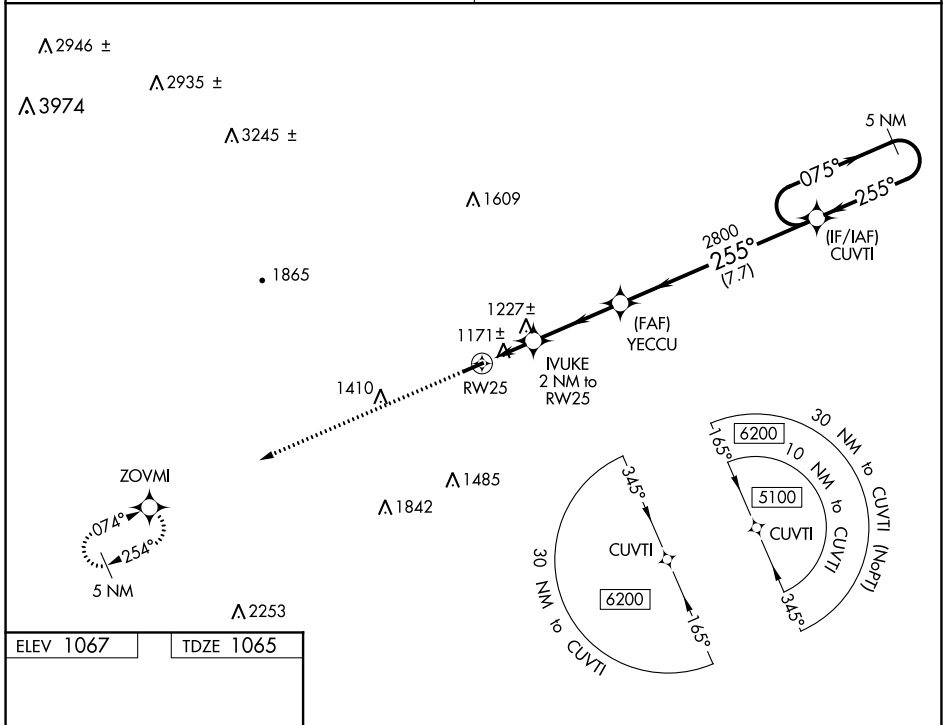
RNAV (GPS) RWY 25

ELKIN MUNI (ZEF)

▼ Obtain local altimeter setting on CTAF; when not received, use Mount Airy altimeter setting and increase MDA 80 ft and LP and Circling Cats C/D
▲ NA visibility ¼ mile. DME/DME RNP-0.3 NA. Procedure NA at night. Helicopter visibility reduction below 1 SM NA.

MISSED APPROACH: Climb to 4900 direct ZOVMI and hold, continue climb-in-hold to 4900.

ATLANTA CENTER 125.15 263.0	UNICOM 123.05(CTAF) 0
---------------------------------------	---------------------------------



CATEGORY	A	B	C	D
LP MDA	1440-1	375 (400-1)	1440-1 $\frac{1}{8}$	375 (400-1 $\frac{1}{8}$)
LNAV MDA	1480-1	415 (500-1)	1480-1 $\frac{3}{8}$	415 (500-1 $\frac{3}{8}$)
C CIRCLING	1540-1 473 (500-1)	1600-1 533 (600-1)	1680-1 $\frac{3}{4}$ 613 (700-1 $\frac{3}{4}$)	1840-2 $\frac{1}{2}$ 773 (800-2 $\frac{1}{2}$)

SE-2, 22 FEB 2024 to 21 MAR 2024

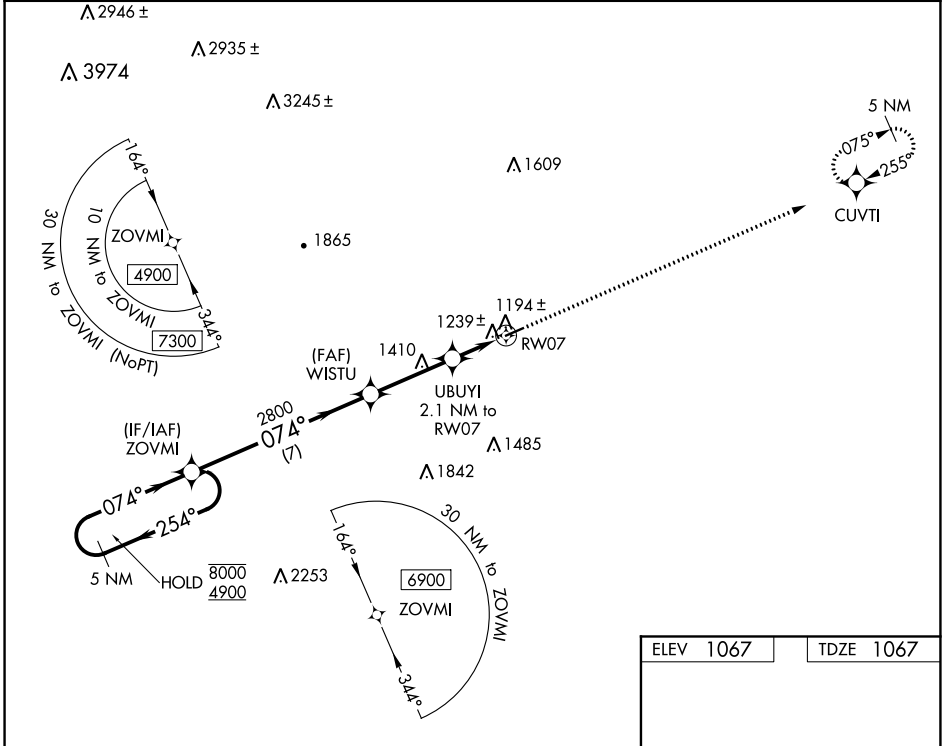
SE-2, 22 FEB 2024 to 21 MAR 2024

WAAS CH 65836 W07A	APP CRS 074°	Rwy Idg TDZE Apt Elev	4001 1067 1067
---------------------------------	------------------------	-----------------------------	---

RNAV (GPS) RWY 7

ELKIN MUNI (ZEF)

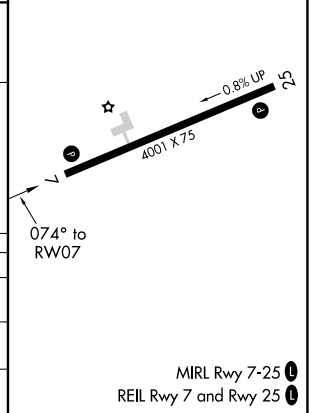
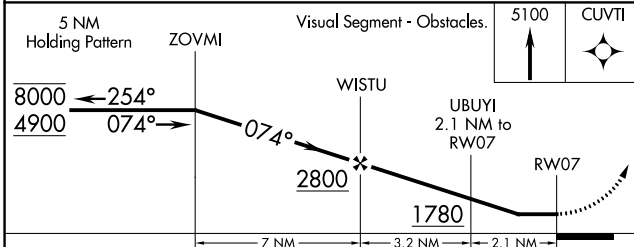
RNP APCH.	<p>Procedure NA at night. Obtain local altimeter setting on CTAF; when not received, use Mount Airy altimeter setting and increase all MDAs 80 feet and all Cats C/D visibilities ¼ SM. Rwy 7 helicopter visibility reduction below 1 SM NA.</p>	<p>MISSED APPROACH: Climb to 5100 direct CUVTI and hold, continue climb-in-hold to 5100.</p>
<p>ATLANTA CENTER 125.15 263.0</p>		<p>UNICOM 123.05 (CTAF)</p>



SE-2, 22 FEB 2024 to 21 MAR 2024

SE-2, 22 FEB 2024 to 21 MAR 2024

ELEV 1067	TDZE 1067
-----------	-----------



CATEGORY	A	B	C	D
LP MDA	1460-1	393 (400-1)	1460-1½	393 (400-1½)
LNAV MDA	1500-1	433 (500-1)	1500-1¼	433 (500-1¼)
CIRCLING	1540-1 473 (500-1)	1600-1 533 (600-1)	1680-1¾ 613 (700-1¾)	1840-2½ 773 (800-2½)