

LOC I-TYQ <b>111.3</b>	APP CRS <b>002°</b>	Rwy Idg TDZE Apt Elev	<b>7000</b> <b>922</b> <b>922</b>
---------------------------	------------------------	-----------------------------	---

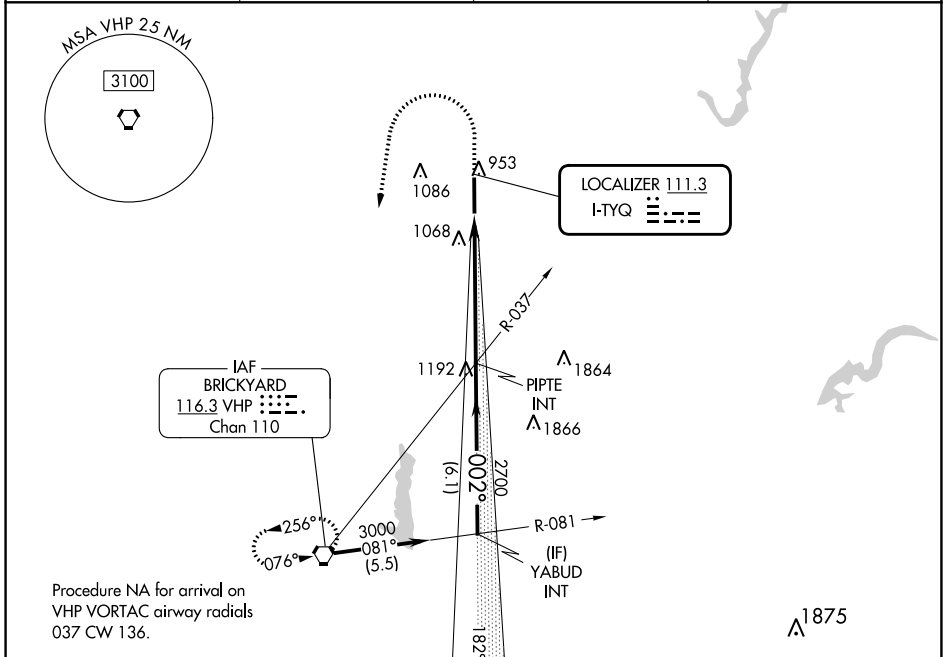
# ILS or LOC RWY 36

INDIANAPOLIS EXEC (TYQ)

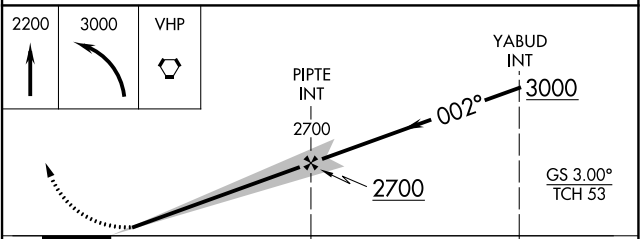
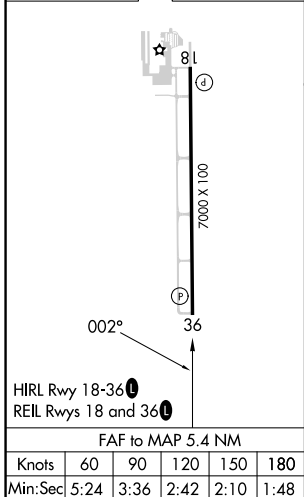
**NA** Autopilot coupled approach NA below 1900.  
Rwy 36 helicopter visibility reduction below 3/4 SM NA.

MISSED APPROACH: Climb to 2200 then climbing left turn to 3000 direct VHP VORTAC and hold.

AWOS-3PT <b>120.725</b>	INDIANAPOLIS APP CON <b>124.65 127.15 317.8</b>	CLNC DEL <b>118.175</b>	UNICOM <b>123.05 (CTAF) 0</b>
----------------------------	--	----------------------------	----------------------------------



ELEV 922	TDZE 922
----------	----------



CATEGORY	A	B	C	D
S-ILS 36	1199-7/8 277 (300-7/8)			
S-LOC 36	1400-1	478 (500-1)	1400-1 3/8	478 (500-1 3/8)
<input checked="" type="checkbox"/> CIRCLING	1400-1	478 (500-1)	1440-1 1/2	1480-2
			518 (600-1 1/2)	558 (600-2)

EC-2, 22 FEB 2024 to 21 MAR 2024

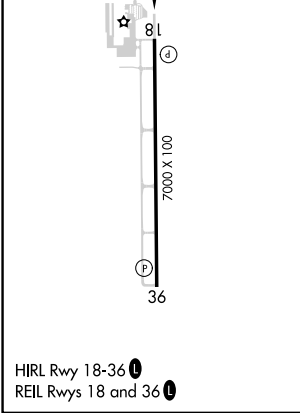
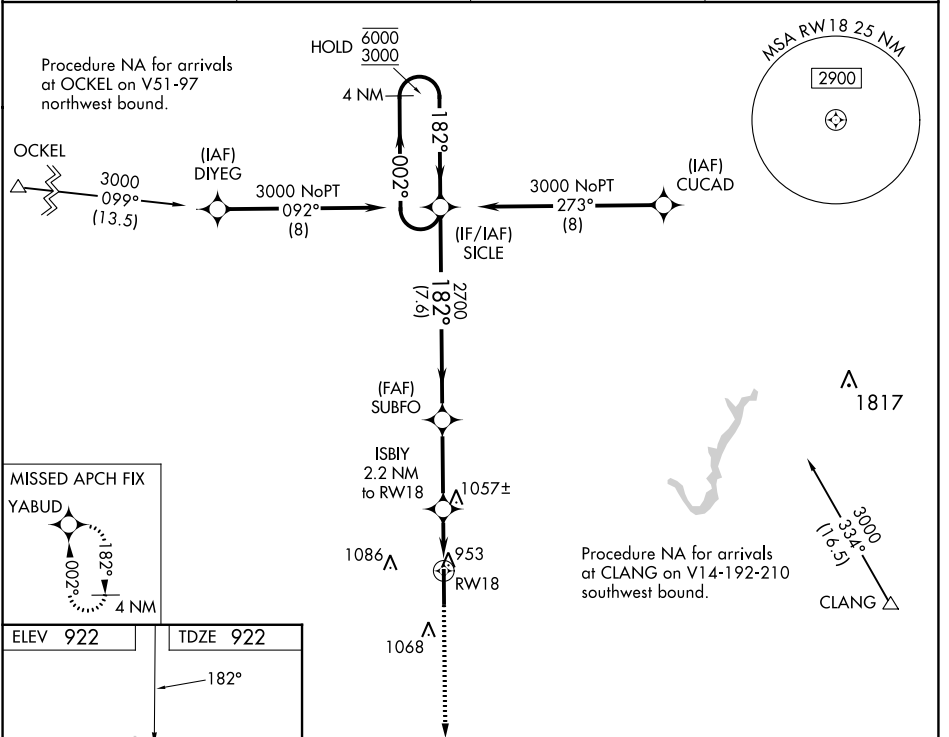
EC-2, 22 FEB 2024 to 21 MAR 2024

APP CRS	Rwy Idg	<b>7000</b>
<b>182°</b>	TDZE	<b>922</b>
	Apt Elev	<b>922</b>

# RNAV (GPS) RWY 18

INDIANAPOLIS EXEC (TYQ)

RNP APCH - GPS.		MISSED APPROACH: Climb to 3000 direct YABUD and hold.	
AWOS-3PT <b>120.725</b>	INDIANAPOLIS APP CON <b>124.65 127.15 317.8</b>	CLNC DEL <b>118.175</b>	UNICOM <b>123.05 (CTAF)</b>



CATEGORY	A	B	C	D
LNAV/VNAV DA	1216-7/8		294 (300-7/8)	
LNAV MDA	1320-1 398 (400-1)		1320-1 1/8 398 (400-1 1/8)	
<b>C</b> CIRCLING	1380-1 458 (500-1)		1440-1 1/2 518 (600-1 1/2) 1480-2 558 (600-2)	

EC-2, 22 FEB 2024 to 21 MAR 2024

EC-2, 22 FEB 2024 to 21 MAR 2024

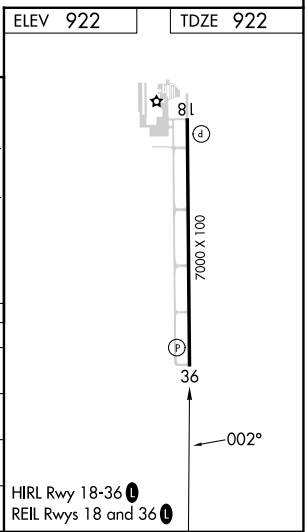
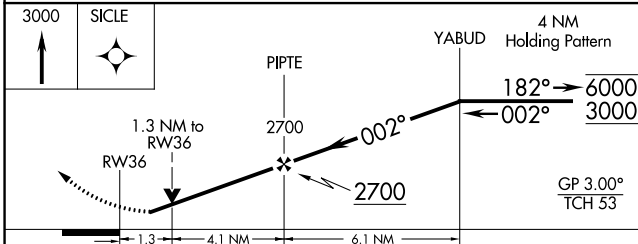
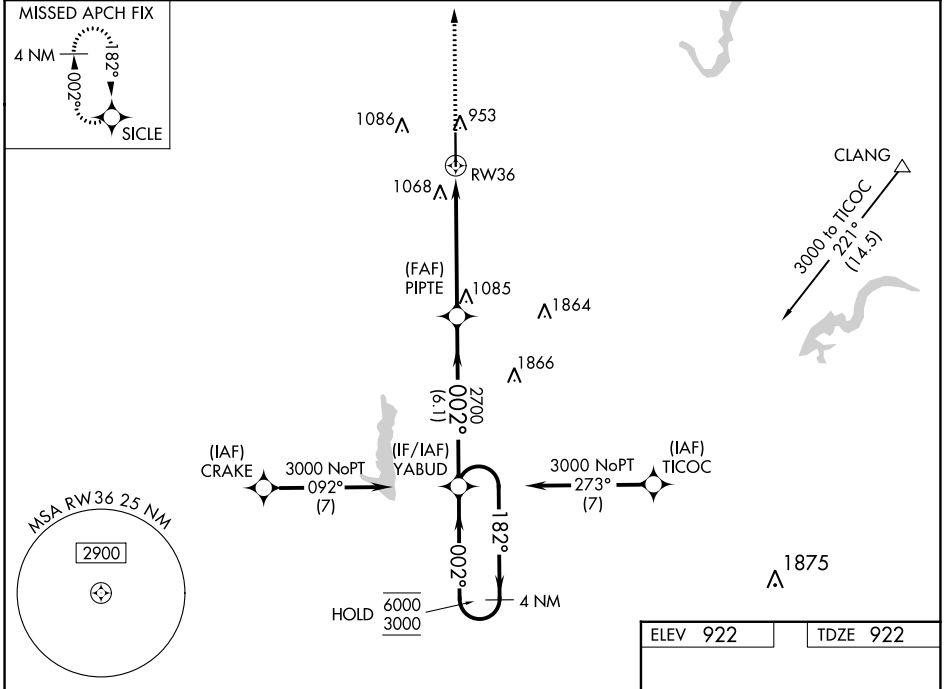
WAAS CH <b>53599</b> <b>W36A</b>	APP CRS <b>002°</b>	Rwy Idg <b>7000</b> TDZE <b>922</b> Apt Elev <b>922</b>
--	------------------------	---

# RNAV (GPS) RWY 36

INDIANAPOLIS EXEC (TYQ)

RNP APCH - GPS.	MISSED APPROACH: Climb to 3000 direct SICLE and hold.
<p>▼ Rwy 36 helicopter visibility reduction below 3/4 SM NA. For uncompensated Baro-VNAV systems, LNAV/VNAV NA below -16°C or above 54°C.</p>	

AWOS-3PT <b>120.725</b>	INDIANAPOLIS APP CON <b>124.65 127.15 317.8</b>	CLNC DEL <b>118.175</b>	UNICOM <b>123.05 (CTAF)</b>
----------------------------	--	----------------------------	--------------------------------



CATEGORY	A	B	C	D
LPV DA	1199-7/8		277 (300-7/8)	
LNAV/VNAV DA	1351-1 1/4		429 (500-1 1/4)	
LNAV MDA	1400-1	478 (500-1)	1400-1 3/8	478 (500-1 3/8)
CIRCLING	1400-1	478 (500-1)	1440-1 1/2 518 (600-1 1/2)	1480-2 558 (600-2)

EC-2, 22 FEB 2024 to 21 MAR 2024

EC-2, 22 FEB 2024 to 21 MAR 2024

VORTAC VHP <b>116.3</b> Chan <b>110</b>	APP CRS <b>201°</b>	Rwy Idg <b>7000</b> TDZE <b>922</b> Apt Elev <b>922</b>
---	------------------------	---

# VOR RWY 18

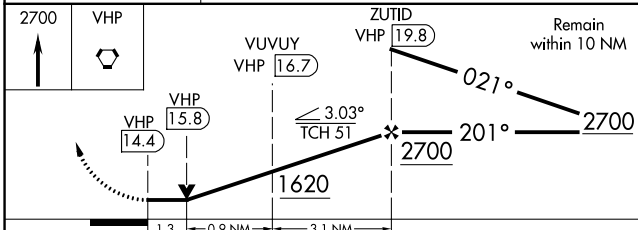
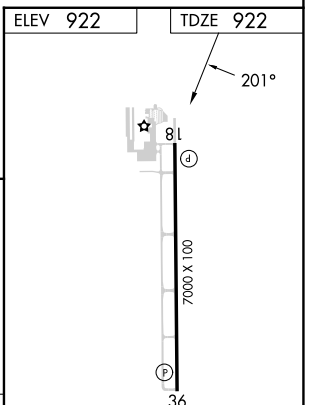
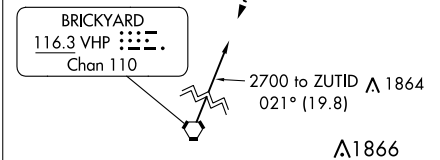
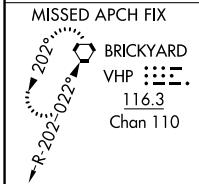
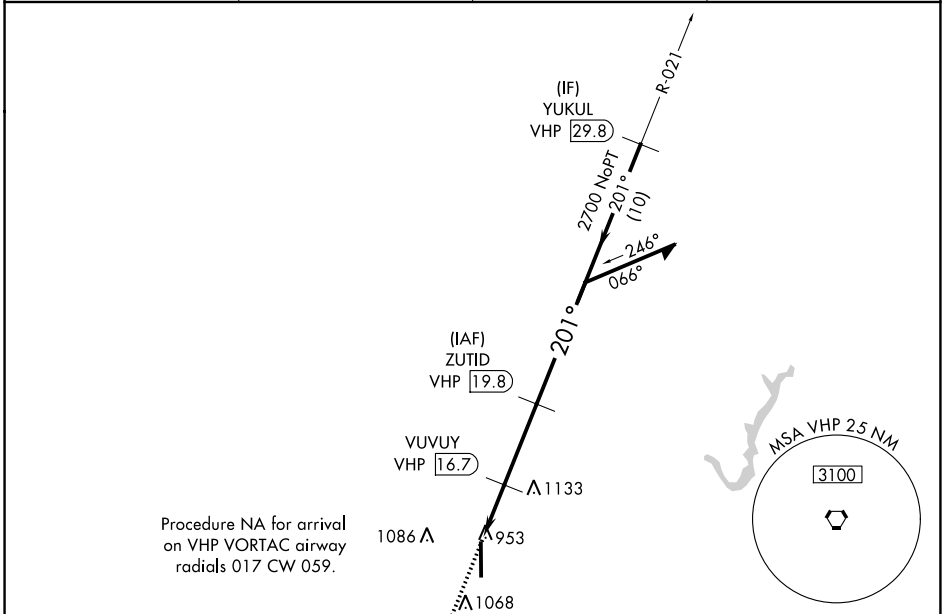
INDIANAPOLIS EXEC (TYQ)

DME required.

**▽** Rwy 18 helicopter visibility reduction below 3/4 SM NA.

MISSED APPROACH: Climb to 2700 direct VHP VORTAC and hold.

AWOS-3PT <b>120.725</b>	INDIANAPOLIS APP CON <b>124.65 127.15 317.8</b>	CLNC DEL <b>118.175</b>	UNICOM <b>123.05 (CTAF) ①</b>
----------------------------	--	----------------------------	----------------------------------



CATEGORY	A	B	C	D
S-18	1400-1 478 (500-1)		1400-1 $\frac{3}{8}$ 478 (500-1 $\frac{3}{8}$ )	
<b>C</b> CIRCLING	1400-1 478 (500-1)		1440-1 $\frac{1}{2}$ 518 (600-1 $\frac{1}{2}$ )	1480-2 558 (600-2)

HIRL Rwy 18-36 ①

REIL Rwsy 18 and 36 ①

EC-2, 22 FEB 2024 to 21 MAR 2024

EC-2, 22 FEB 2024 to 21 MAR 2024